



LOT 26

GLENGYRON LISTER (P)

DOB: 21/08/2015

Colour: Red

Ident No.: TPSL13

A/c: Tippett Family

BYLAND GOLD SPEAR (P) Red Little White
 RED ROSE GOLD SPEAR RUFFIAN (IMP CAN) (P) Roan
 RED ROSE GUS ROAN LADY 6J (P) Roan

GLENNEL IMF B90 (P) Red
 SPRYS IMF D108 (P) Red Little White
 SPRYS WAGMANS DAFFODIL A183 (P) Roan

MEASUREMENTS	
Scrotal Size	
Weight	

Sire: SPRYS PRIMROSE'S BUDDY J17 (P) (ET) (AI) Roan

Dam: GLENGYRON ROAE 78 (P) Red

THE GROVE KASPROWICZ W791 (P) Red
 THE GROVE PRIMROSE A742 (P) (ET) (AI) Red
 THE GROVE PRIMROSE R202 (P) Red

BAYVIEW GEOFFY15 (P) Red
 GLENGYRON ROSE 63RD (P) Red
 GLENGYRON ROSE 50TH (P) Roan

February 2017 Shorthorn GROUP BREEDPLAN

	Calving Ease DIR (%)	Calving Ease DTRS (%)	Gestation Length (days)	Birth Wt. (kg)	200 Day Wt. (kg)	400 Day Wt. (kg)	600 Day Wt. (kg)	Mat. Cow Wt. (kg)	Milk (kg)	Scrotal Size (cm)	Days to Calving (days)	Carcase Wt. (kg)	Eye Muscle Area (sq.cm)	Rib Fat (mm)	Rump Fat (mm)	Retail Beef Yield (%)	IMF (%)	Dom. Mat. Index (\$)	Export Mat. Index (\$)	Nth Mat. Index (\$)
EBV	+3.0	+0.5	-1.4	+2.4	+23	+38	+45	+44	+3	+0.7	+1.1	+38	+6.0	-0.4	-0.8	+1.6	+0.6	+\$32	+\$37	+\$39
ACC	37%	29%	43%	69%	63%	66%	60%	54%	34%	67%	37%	46%	50%	58%	58%	51%	40%			

Traits Observed: BWT, 200WT, 400WT, SS, FAT, EMA, IMF

Sprys Primroses Buddy J17 has had a big influence at Glengyron with ease of calving, especially heifers and easy do-ability with softness. Glengyron Lister is a solid red bull with tremendous carcass. He is clean through the front and has a slick coat.

Top 10% for EMA. Top 20% for Carcass wt & RBY. Top 25% for IMF. Top 30% for Calving ease direct, BW & Export Maternal.

Purchaser: \$



SPENCER FAMILY DIVA (P) (ET)
 sired by Sprys Patents Ace G38. Dam: Sprys Picture Perfect.



ACE IN THE HOLE - bred by the Carter family.
 Supreme Shorthorn Exhibit Sydney Royal 2016 & Supreme Champion Dubbo National 2016
 sired by Sprys Patents Ace G38.



ANGUS REFERENCE SIRES

REFERENCE SIRE **CONNELY CAPITALIST 028**

DOB: 11/01/2010

Ident No.: USA16752262

Genetic Status: AMF, NHF, CAF, MAF, DDF

G D A R TRAVELER 71

B A R EXT TRAVELER 205

SITZ TRAVELER 8180

C R A BEXTOR 872 5205 608

SITZ EVERELDA ENTENSE 1137

CRA LADY JAYE 608 498 S EASY

Sire: S A V FINAL ANSWER 0035

Dam: PRIDES PITA OF CONANGA 8821

BON VIEW BANDO 598

TRAVELER OF CONANGA

S A V EMULOUS 8145

PRIDES TRAV OF CONANGA 6499

S A V SKY EMULOUS 2124

PRETTY PET OF CONANGA

March 2017 Angus Australia BREEDPLAN

	Calving Ease DIR (%)	Calving Ease DTRS (%)	Gest Length (days)	Birth Wt. (kg)	200 Day Wt. (kg)	400 Day Wt. (kg)	600 Day Wt. (kg)	Mat. Cow Wt. (kg)	Milk (kg)	Scrotal Size (cm)	Days to Calving (days)	Carcase Wt. (kg)	Eye Muscle Area (sq.cm)	Rib Fat (mm)	Rump Fat (mm)	Retail Beef Yield (%)	IMF (%)	Angus. Breed. Index (\$)	Dom. Index (\$)	Hvy. Grain. Index (\$)	Hvy. Grass. Index (\$)
EBV	+1.4	+1.3	-6.3	+3.3	+54	+92	+116	+79	+15	+2.5	-3.2	+66	+9.4	+2.3	-1.0	+1.7	+1.4	+\$126	+\$125	+\$125	+\$128
ACC	66%	52%	72%	87%	82%	86%	83%	79%	79%	85%	46%	77%	74%	78%	72%	70%	72%				

Traits Observed: Genomics

We are very pleased to have used this proven US bull on Luke Bowman's recommendation as being the complete Angus Sire for his EPD balanced performance, ease of calving and his appeal to Beef Producers. Only a small amount of semen came to Australia and we were fortunate to get 40 straws. Quote from Luke Bowman . . .

"Connealy Capitalist 028 was a personal favourite of the Sire department when I worked at Select Sires. I know of no other Angus bull where the widest part of his body is stifle to stifle; that means there is real muscle here. There simply is no other bull as massive and transmits so much power and shape while still ranking so high for Calving Ease. His nickname is "The Freak" because he breaks all calving ease - Angus stereotypes. Top 5% Eye Muscle Area. I still stand behind him and use him in our Shorthorn X Angus composite program as well as on my personal Angus herd."



CONNELY CAPITALIST 028

REFERENCE SIRE **LAWSONS NOVAK E313 (AI)**

DOB: 16/08/2009

Ident No.: VLYE313

Genetic Status: AMF, NHF, CAF, MAF, DDF

B/R NEW DESIGN 036

B/R NEW DESIGN 036

BON VIEW NEW DESIGN 208

G A R PREDESTINED

BON VIEW ERICA 443

G A R EXT 4206

Sire: TC TOTAL 410

Dam: LAWSONS PREDESTINED B770 (AI) (ET)

TWIN VALLEY PRECISION E161

C A FUTURE DIRECTION 5321

TC ERICA EILEEN 2047

G A R FUTURE DIRECTION L84 (ET)

TC ERICA EILEEN 5116

G A R NEW DESIGN 400

March 2017 Angus Australia BREEDPLAN

	Calving Ease DIR (%)	Calving Ease DTRS (%)	Gest Length (days)	Birth Wt. (kg)	200 Day Wt. (kg)	400 Day Wt. (kg)	600 Day Wt. (kg)	Mat. Cow Wt. (kg)	Milk (kg)	Scrotal Size (cm)	Days to Calving (days)	Carcase Wt. (kg)	Eye Muscle Area (sq.cm)	Rib Fat (mm)	Rump Fat (mm)	Retail Beef Yield (%)	IMF (%)	Docility	Angus. Breed. Index (\$)	Dom. Index (\$)	Hvy. Grain. Index (\$)	Hvy. Grass. Index (\$)
EBV	-7.3	+1.5	-2.2	+3.5	+50	+88	+112	+86	+16	+1.2	-5.1	+62	+5.1	-2.3	-2.3	+0.3	+3.0	+8	+\$110	+\$103	+\$125	+\$103
ACC	92%	86%	99%	99%	98%	98%	98%	97%	95%	98%	64%	92%	91%	92%	91%	87%	89%	96%				

Traits Observed: GL, BWT, 200WT, 400WT(X2), SS, FAT, EMA, IMF, Genomics

Really impressed with Novak when I inspected him at Holbrook Breeders for his overall balance and soundness and so free in his movement. His progeny are showing those same traits and are proving to be easy doing.



LAWSONS NOVAK E313 (AI)

ANGUS REFERENCE SIREs

REFERENCE SIRE **SPRYS EFFICIENT J127 (AI)**

DOB: 19/07/2013

Ident No.: DRKJ127

Genetic Status: AMF, NHF, CAF, DDF

C A FUTURE DIRECTION 5321

SITZ NEW DESIGN 458N

BT CROSSOVER 758N

COOLANA NEW DESIGN 458N

BT ROYAL PRIDE 237G

COOLANA PRIMROSE C156

Sire: SILVEIRAS CONVERSION 8064

Dam: COOLANA NIGHTINGALE G281

BR MIDLAND

B/R NEW DESIGN 036

EXG SARAS DREAM S609 R3

COOLANA NIGHTINGALE D26 (AI) (ET)

EXAR SARAS DREAM 9809

CAMPBELL FARMS NIGHTINGALE T573 (AI) (ET)

March 2017 Angus Australia BREEDPLAN

	Calving Ease DIR (%)	Calving Ease DTRS (%)	Gest Length (days)	Birth Wt. (kg)	200 Day Wt. (kg)	400 Day Wt. (kg)	600 Day Wt. (kg)	Mat. Cow Wt. (kg)	Milk (kg)	Scrotal Size (cm)	Days to Calving (days)	Carcase Wt. (kg)	Eye Muscle Area (sq.cm)	Rib Fat (mm)	Rump Fat (mm)	Retail Beef Yield (%)	IMF (%)	Angus. Breed. Index (\$)	Dom. Index (\$)	Hvy. Grain. Index (\$)	Hvy. Grass. Index (\$)
EBV	-4.6	-4.1	-2.3	+6.4	+56	+93	+120	+101	+17	+2.9	-3.4	+74	+10.6	-1.4	-1.5	+1.6	+2.1	+\$116	+\$110	+\$123	+\$113
ACC	61%	47%	69%	77%	75%	77%	76%	74%	64%	80%	37%	67%	65%	68%	67%	59%	61%				

Traits Observed: BWT, 200WT, 400WT, SS, FAT, EMA, IMF Genomics

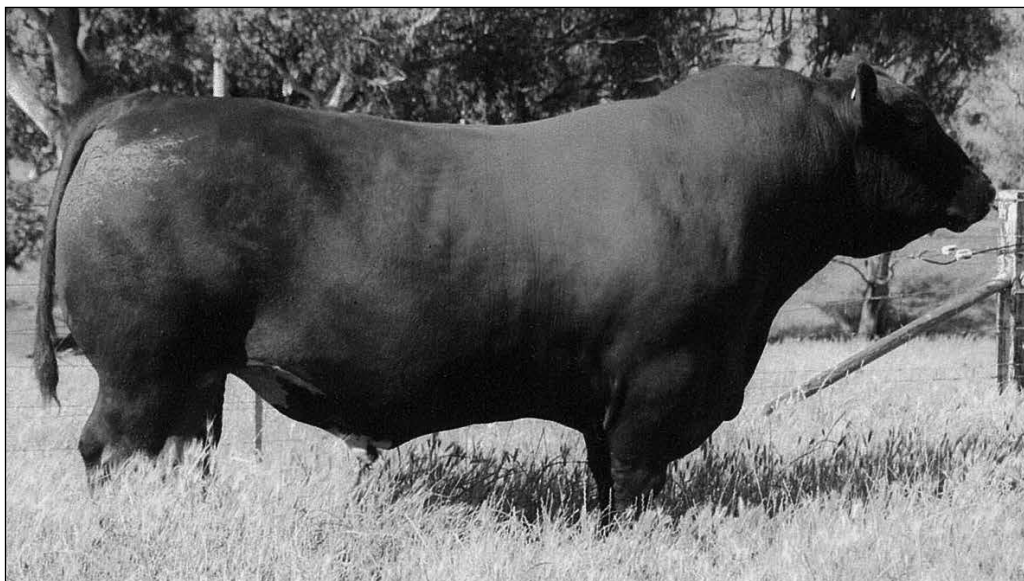
Efficient J127 was top priced bull in our 2015 Sale at \$30,000. We used him on heifers and cows with excellent success. He is a thick, long, sound and very well muscled bull with a great set of testicles.

He was from a first calver. His Dam is our Number 1 Donor in the Sprys herd.



SPRYS EFFICIENT J127 (AI)

REFERENCE SIRE **COOTA PARK H278**



**Reference sire for Composite Angus Bulls.
Lots 41, 42 & 43.**

ANGUS BULLS

LOT 27 SPRYS-W SUPREME M505 (AI) (ET)

DOB: 03/04/2016 Ident No.: LGSM505 Genetic Status: AMFU, NHFU, CAFU, DDFU

SITZ TRAVELER 8180
S A V FINAL ANSWER 0035
S A V EMULOUS 8145

SITZ NEW DESIGN 458N
COOLANA NEW DESIGN 458N
COOLANA PRIMROSE C156

Sire: CONNEALY CAPITALIST 028

Dam: COOLANA NIGHTINGALE G281

C R A BEXTOR 872 5205 608
PRIDES PITA OF CONANGA 8821
PRIDES TRAV OF CONANGA 6499

B/R NEW DESIGN 036
COOLANA NIGHTINGALE D26 (AI) (ET)
CAMPBELL FARMS NIGHTINGALE T573 (AI) (ET)

MEASUREMENTS

Scrotal Size |

Weight |

March 2017 Angus Australia BREEDPLAN

	Calving Ease DIR (%)	Calving Ease DTRS (%)	Gest Length (days)	Birth Wt. (kg)	200 Day Wt. (kg)	400 Day Wt. (kg)	600 Day Wt. (kg)	Mat. Cow Wt. (kg)	Milk (kg)	Scrotal Size (cm)	Days to Calving (days)	Carcase Wt. (kg)	Eye Muscle Area (sq.cm)	Rib Fat (mm)	Rump Fat (mm)	Retail Beef Yield (%)	IMF (%)	Angus. Breed. Index (\$)	Dom. Index (\$)	Hvy. Grain. Index (\$)	Hvy. Grass. Index (\$)
EBV	-0.2	+0.5	-4.1	+4.3	+51	+87	+115	+93	+15	+2.5	-3.6	+64	+6.9	+0.4	-1.1	+1.0	+2.1	+\$121	+\$114	+\$127	+\$118
ACC	40%	34%	44%	58%	54%	55%	55%	51%	49%	52%	32%	49%	47%	50%	47%	46%	46%				

Traits Observed: BWT, 400WT, SS, FAT, EMA, IMF

One of the first sons of Capitalist to be offered. Outstanding young Sire with phenotype and EBV's to make him a top Stud Sire. His Dam has produced two Sires to average \$20,000 each. Dam is our No. 1 Donor cow at Sprys. We are very impressed with M505 balanced data set.

Purchaser: \$

LOT 28 SPRYS-W NOVAC L513 (APR) (AI)

DOB: 09/08/2015 Ident No.: LGSL513 Genetic Status: AMFU, NHFU, CAFU, DD3%

BON VIEW NEW DESIGN 208
TC TOTAL 410
TC ERICA EILEEN 2047

HYLINE RIGHTTIME 338 (ET)
COOLANA RIGHT TIME C71 (AI) (ET)
COOLANA X3 (AI)

Sire: LAWSONS NOVAK E313 (AI)

Dam: SPRYS RT GOVERNESS G236 (APR)

G A R PREDESTINED
LAWSONS PREDESTINED B770 (AI) (ET)
G A R FUTURE DIRECTION L84 (ET)

CONNEALY LEAD ON
COOLANA Z128 (APR) (AI)
COOLANA X146 (APR) (AI) (ET)

MEASUREMENTS

Scrotal Size |

Weight |

March 2017 Angus Australia BREEDPLAN

	Calving Ease DIR (%)	Calving Ease DTRS (%)	Gest Length (days)	Birth Wt. (kg)	200 Day Wt. (kg)	400 Day Wt. (kg)	600 Day Wt. (kg)	Mat. Cow Wt. (kg)	Milk (kg)	Scrotal Size (cm)	Days to Calving (days)	Carcase Wt. (kg)	Eye Muscle Area (sq.cm)	Rib Fat (mm)	Rump Fat (mm)	Retail Beef Yield (%)	IMF (%)	Angus. Breed. Index (\$)	Dom. Index (\$)	Hvy. Grain. Index (\$)	Hvy. Grass. Index (\$)
EBV	-1.1	+0.6	-6.7	+2.5	+42	+79	+100	+69	+18	+2.2	-6.7	+57	+6.0	-0.6	0.0	+0.5	+2.2	+\$120	+\$112	+\$126	+\$114
ACC	54%	50%	83%	73%	68%	69%	67%	64%	58%	72%	41%	60%	61%	61%	61%	57%	56%				

Traits Observed: GL, BWT, 200WT, 400WT, SS, FAT, EMA, IMF

A thick, deep bodied bull who will impress buyers for his carcass shape and soundness of structure and EBV's. Should be safe to use on heifers and cows.

Purchaser: \$

LOT 29 SPRYS-W NOVAC L508 (APR) (AI)

DOB: 23/07/2015 Ident No.: LGSL508 Genetic Status: AMFU, NHFU, CAFU, DDFU

BON VIEW NEW DESIGN 208
TC TOTAL 410
TC ERICA EILEEN 2047

BALDRIDGE KABOOM K243 KCF
MOHNNEN DYNAMITE 1356
MOHNNEN JILT 910

Sire: LAWSONS NOVAK E313 (AI)

Dam: WHEELVIEW CONVERGENCE G41 (APR) (AI)

G A R PREDESTINED
LAWSONS PREDESTINED B770 (AI) (ET)
G A R FUTURE DIRECTION L84 (ET)

G A R EVAS CONVERGENCE 3403
TUCKLAN CONVERGENCE B250 (APR) (AI)
TUCKLAN DIRECTION Z192 (APR)

MEASUREMENTS

Scrotal Size |

Weight |

March 2017 Angus Australia BREEDPLAN

	Calving Ease DIR (%)	Calving Ease DTRS (%)	Gest Length (days)	Birth Wt. (kg)	200 Day Wt. (kg)	400 Day Wt. (kg)	600 Day Wt. (kg)	Mat. Cow Wt. (kg)	Milk (kg)	Scrotal Size (cm)	Days to Calving (days)	Carcase Wt. (kg)	Eye Muscle Area (sq.cm)	Rib Fat (mm)	Rump Fat (mm)	Retail Beef Yield (%)	IMF (%)	Angus. Breed. Index (\$)	Dom. Index (\$)	Hvy. Grain. Index (\$)	Hvy. Grass. Index (\$)
EBV	-4.3	-0.5	-2.6	+3.7	+48	+86	+109	+89	+13	+0.4	-4.8	+62	+1.7	+0.5	+0.8	-1.0	+2.2	+\$100	+\$97	+\$101	+\$99
ACC	55%	50%	83%	73%	68%	69%	68%	65%	58%	72%	41%	61%	61%	61%	61%	57%	57%				

Traits Observed: GL, BWT, 200WT, 400WT, SS, FAT, EMA, IMF

A soft, easy doing, structurally sound bull who has a lot of eye appeal.

Purchaser: \$



LOT 30 SPRYS-W TOTAL L549

DOB: 12/10/2015 Ident No.: LGSL549 Genetic Status: DDC, AMFU, NHFU, CAFU

TEHAMA TOTAL M811
SILVEIRAS M811 TOTAL 6103
SILVEIRA ELBA 3309

V D A R NEW TREND 315
B/R NEW DESIGN 036
B/R BLACKCAP EMPRESS 76

Sire: COOLANA TOTAL J215 (AI)

Dam: COOLANA NIGHTINGALE D26 (AI) (ET)

HYLINE RIGHT TIME 338 (ET)

R R SCOTCHCAP 9440

COOLANA JANET D91 (AI)

CAMPBELL FARMS NIGHTINGALE T573 (AI) (ET)

COOLANA JANET A2 (ACR) (AI) (ET)

CAMPBELL FARMS N'GALE N508 (AI) (ET)

MEASUREMENTS	
Scrotal Size	
Weight	

March 2017 Angus Australia BREEDPLAN

	Calving Ease DIR (%)	Calving Ease DTRS (%)	Gest Length (days)	Birth Wt. (kg)	200 Day Wt. (kg)	400 Day Wt. (kg)	600 Day Wt. (kg)	Mat. Cow Wt. (kg)	Milk (kg)	Scrotal Size (cm)	Days to Calving (days)	Carcass Wt. (kg)	Eye Muscle Area (sq.cm)	Rib Fat (mm)	Rump Fat (mm)	Retail Beef Yield (%)	IMF (%)	Angus. Breed. Index (\$)	Dom. Index (\$)	Hvy. Grain. Index (\$)	Hvy. Grass. Index (\$)
EBV	-0.5	+1.0	-4.0	+3.9	+47	+81	+106	+95	+18	+1.5	-3.9	+61	+4.5	-1.3	-1.9	+0.4	+2.6	+\$109	+\$105	+\$120	+\$104
ACC	46%	41%	58%	70%	63%	63%	62%	59%	50%	64%	39%	54%	52%	52%	53%	49%	47%				

Traits Observed: BWT, 200WT, 400WT, SS, FAT, EMA, IMF

Extremely sound, long bodied bull who exhibits great soundness and balance. His mum is Dam of our No. 1 Donor who shows tremendous capacity and depth with excellent udder and soundness.

Purchaser: \$

LOT 31 SPRYS-W GEKO L553 (APR)

DOB: 24/07/2015 Ident No.: LGSL553 Genetic Status: DDF, CAC, AMFU, NHFU

TE MANIA YORKSHIRE Y437 (AI)
TE MANIA BERKLEY B1 (AI)
TE MANIA LOWAN Z53 (AI) (ET)

SITZ NEW DESIGN 458N
THE LAURELS GRANITE G90 (AI) (ET)
THE LAURELS CLARINET C40

Sire: HAZELDEAN GECKO G440 (APR) (AI)

Dam: A.J.M. J10

B/R NEW DESIGN 323-9150

RAFF MIDLAND Z204 (AI) (ET)

HAZELDEAN C506 (APR) (AI)

A.J.M. ANGUS MARTINA F1 (AI)

HAZELDEAN A610 (APR) (AI)

VERMONT MARTINA C484

MEASUREMENTS	
Scrotal Size	
Weight	

March 2017 Angus Australia BREEDPLAN

	Calving Ease DIR (%)	Calving Ease DTRS (%)	Gest Length (days)	Birth Wt. (kg)	200 Day Wt. (kg)	400 Day Wt. (kg)	600 Day Wt. (kg)	Mat. Cow Wt. (kg)	Milk (kg)	Scrotal Size (cm)	Days to Calving (days)	Carcass Wt. (kg)	Eye Muscle Area (sq.cm)	Rib Fat (mm)	Rump Fat (mm)	Retail Beef Yield (%)	IMF (%)	Angus. Breed. Index (\$)	Dom. Index (\$)	Hvy. Grain. Index (\$)	Hvy. Grass. Index (\$)
EBV	+4.0	+3.9	-7.9	+2.9	+44	+83	+106	+93	+14	+2.0	-6.3	+62	+4.6	+0.6	+0.5	+0.1	+1.9	+\$124	+\$116	+\$131	+\$120
ACC	38%	33%	49%	54%	53%	53%	53%	48%	40%	48%	34%	45%	41%	42%	42%	39%	38%				

Traits Observed: 400WT(x2), SS, FAT, EMA, IMF

You are sure to be impressed with L553 for his overall balance of phenotype and his great data set which makes him the complete package. Ideal for heifers and cows. L553 has a great shoulder set and extension in this front end.

Purchaser: \$

LOT 32 SPRYS-W RIGHT TIME L519 (APR) (AI)

DOB: 15/08/2015 Ident No.: LGSL519 Genetic Status: AMFU, NHFU, CAFU, DDFU

C A FUTURE DIRECTION 5321
BT CROSSOVER 758N
BT ROYAL PRIDE 237G

LEACHMAN RIGHT TIME
HYLINE RIGHT TIME 338 (ET)
HYLINE PRIDE 265 (ET)

Sire: SILVEIRAS CONVERSION 8064

Dam: COOLANA B394 (APR) (AI)

BR MIDLAND

COOLANA Q12 (AI)

EXG SARAS DREAM S609 R3

COOLANA T206 (APR)

EXAR SARAS DREAM 9809

COOLANA Q185 (APR)

MEASUREMENTS	
Scrotal Size	
Weight	

March 2017 Angus Australia BREEDPLAN

	Calving Ease DIR (%)	Calving Ease DTRS (%)	Gest Length (days)	Birth Wt. (kg)	200 Day Wt. (kg)	400 Day Wt. (kg)	600 Day Wt. (kg)	Mat. Cow Wt. (kg)	Milk (kg)	Scrotal Size (cm)	Days to Calving (days)	Carcass Wt. (kg)	Eye Muscle Area (sq.cm)	Rib Fat (mm)	Rump Fat (mm)	Retail Beef Yield (%)	IMF (%)	Angus. Breed. Index (\$)	Dom. Index (\$)	Hvy. Grain. Index (\$)	Hvy. Grass. Index (\$)
EBV	-4.8	-4.0	-2.2	+5.9	+53	+95	+118	+93	+17	+3.5	-2.5	+71	+9.9	0.0	0.0	+1.4	+1.9	+\$113	+\$112	+\$116	+\$113
ACC	55%	48%	84%	74%	70%	70%	68%	66%	61%	73%	40%	61%	61%	62%	62%	57%	56%				

Traits Observed: GL, BWT, 200WT, 400WT, SS, FAT, EMA, IMF

L519 is one of our favourites with plenty of growth and eye muscle with an excellent phenotype.

Purchaser: \$



LOT 33 SPRYS-W EFFICIENT L540 (APR)

DOB: 07/09/2015 Ident No.: LGSL540 Genetic Status: AMFU, NHFU, CAFU, DD7%

BT CROSSOVER 758N
SILVEIRAS CONVERSION 8064
EXG SARAS DREAM S609 R3

TC TOTAL 410
TC FRANKLIN 619
TC MARCIA 1069

Sire: **SPRYS EFFICIENT J127 (AI)**

Dam: **SPRYS FRANKLIN GOVERNESS G G226 (APR) (AI)**

COOLANA NEW DESIGN 458N
COOLANA NIGHTINGALE G281

P A R B DESIGN PLUS 97
COOLANA Y163 (APR) (AI)

COOLANA NIGHTINGALE D26 (AI) (ET)

COOLANA T127 (APR) (AI)

MEASUREMENTS	
Scrotal Size	
Weight	

March 2017 Angus Australia BREEDPLAN

	Calving Ease DIR (%)	Calving Ease DTRS (%)	Gest Length (days)	Birth Wt. (kg)	200 Day Wt. (kg)	400 Day Wt. (kg)	600 Day Wt. (kg)	Mat. Cow Wt. (kg)	Milk (kg)	Scrotal Size (cm)	Days to Calving (days)	Carcass Wt. (kg)	Eye Muscle Area (sq.cm)	Rib Fat (mm)	Rump Fat (mm)	Retail Beef Yield (%)	IMF (%)	Angus. Breed. Index (\$)	Dom. Index (\$)	Hvy. Grain. Index (\$)	Hvy. Grass. Index (\$)
EBV	-3.4	-1.4	-2.7	+5.6	+55	+92	+119	+109	+13	+1.9	-3.1	+69	+6.5	-2.4	-2.5	+1.2	+2.1	+\$111	+\$108	+\$119	+\$108
ACC	40%	35%	53%	68%	62%	62%	60%	55%	44%	67%	32%	52%	52%	52%	54%	49%	46%				

Traits Observed: BWT, 200WT, 400WT, SS, FAT, EMA, IMF

Sired by our top priced bull in our 2015 sale at \$30,000. L540 will not disappoint when you see him.

Purchaser: \$

LOT 34 SPRYS-W NOVAC L528 (AI)

DOB: 17/08/2015 Ident No.: LGSL528 Genetic Status: NHF, CAF, DDC, AMFU

BON VIEW NEW DESIGN 208
TC TOTAL 410
TC ERICA EILEEN 2047

BON VIEW NEW DESIGN 1407
LCC DILLON G689L
LEACHMAN GAMMER J3842

Sire: **LAWSONS NOVAC E313 (AI)**

Dam: **PATAWALLA A67 (AI)**

G A R PREDESTINED
LAWSONS PREDESTINED B770 (AI) (ET)

PATAWALLA W69 (AI) (ET)
PATAWALLA Y42

G A R FUTURE DIRECTION L84 (ET)

PATAWALLA S89 (AI) (ET)

MEASUREMENTS	
Scrotal Size	
Weight	

March 2017 Angus Australia BREEDPLAN

	Calving Ease DIR (%)	Calving Ease DTRS (%)	Gest Length (days)	Birth Wt. (kg)	200 Day Wt. (kg)	400 Day Wt. (kg)	600 Day Wt. (kg)	Mat. Cow Wt. (kg)	Milk (kg)	Scrotal Size (cm)	Days to Calving (days)	Carcass Wt. (kg)	Eye Muscle Area (sq.cm)	Rib Fat (mm)	Rump Fat (mm)	Retail Beef Yield (%)	IMF (%)	Angus. Breed. Index (\$)	Dom. Index (\$)	Hvy. Grain. Index (\$)	Hvy. Grass. Index (\$)
EBV	-0.5	+2.8	-2.8	+2.4	+37	+64	+85	+62	+12	+1.0	-3.7	+44	+5.3	-1.2	-1.5	+0.7	+2.1	+\$97	+\$98	+\$100	+\$96
ACC	54%	49%	84%	74%	66%	65%	65%	66%	60%	58%	40%	58%	54%	57%	56%	53%	54%				

Traits Observed: GL, BWT, 400WT, SS, FAT, EMA, IMF

Great balance of EBV's. Deep, thick, medium maturity bull by the great breeding sire Lawsons Novak. Ideal bull for heifers and cows.

Purchaser: \$

LOT 35 SPRYS-W EFFICIENT L500

DOB: 03/07/2015 Ident No.: LGSL500 Genetic Status: AMFU, NHFU, CAFU, DDFU

BT CROSSOVER 758N
SILVEIRAS CONVERSION 8064
EXG SARAS DREAM S609 R3

MERRIDALE CERTAIN GOLD C35 (AI)
SPRYS GAMBLER G035
MURDEDUKE JEDDA C49 (AI)

Sire: **SPRYS EFFICIENT J127 (AI)**

Dam: **SPRYS GAMBLERS BONNIE J141**

COOLANA NEW DESIGN 458N
COOLANA NIGHTINGALE G281

B/R FUTURE DIRECTION 4268
SPRYS FD GOVERNESS G222 (AI)

COOLANA NIGHTINGALE D26 (AI) (ET)

COOLANA X1 (AI)

MEASUREMENTS	
Scrotal Size	
Weight	

March 2017 Angus Australia BREEDPLAN

	Calving Ease DIR (%)	Calving Ease DTRS (%)	Gest Length (days)	Birth Wt. (kg)	200 Day Wt. (kg)	400 Day Wt. (kg)	600 Day Wt. (kg)	Mat. Cow Wt. (kg)	Milk (kg)	Scrotal Size (cm)	Days to Calving (days)	Carcass Wt. (kg)	Eye Muscle Area (sq.cm)	Rib Fat (mm)	Rump Fat (mm)	Retail Beef Yield (%)	IMF (%)	Angus. Breed. Index (\$)	Dom. Index (\$)	Hvy. Grain. Index (\$)	Hvy. Grass. Index (\$)
EBV	-4.1	-2.4	-2.2	+7.3	+55	+92	+123	+109	+13	+3.0	-3.5	+72	+9.3	-2.4	-2.1	+2.2	+1.6	+\$119	+\$111	+\$126	+\$116
ACC	33%	28%	38%	54%	59%	61%	56%	49%	37%	67%	27%	49%	51%	52%	54%	48%	44%				

Traits Observed: 200WT, 400WT, SS, FAT, EMA, IMF

L500 is easy moving, deep sided with plenty of capacity with a little extra frame. By our top priced bull in 2015 Sale at \$30,000. Out of a heifer born unassisted.

Purchaser: \$



LOT 36 SPRYS-W TOTAL L550 (APR)

DOB: 24/09/2015

Ident No.: LGSL550

Genetic Status: AMFU, NHFU, CAFU, DDFU

TEHAMA TOTAL M811

C A FUTURE DIRECTION 5321

SILVEIRAS M811 TOTAL 6103

B/R 65R GENESIS

SILVEIRA ELBA 3309

B/R BLACKCAP EMPRESS 127 (ET)

Sire: COOLANA TOTAL J215 (AI)

Dam: COOLANA D538 (APR) (AI)

HYLINE RIGHT TIME 338 (ET)

PERRY POWER DESIGN 715

COOLANA JANET D91 (AI)

COOLANA X304 (APR) (AI)

COOLANA JANET A2 (ACR) (AI) (ET)

COOLANA T107

MEASUREMENTS

Scrotal Size |

Weight |

March 2017 Angus Australia BREEDPLAN

	Calving Ease DIR (%)	Calving Ease DTRS (%)	Gest Length (days)	Birth Wt. (kg)	200 Day Wt. (kg)	400 Day Wt. (kg)	600 Day Wt. (kg)	Mat. Cow Wt. (kg)	Milk (kg)	Scrotal Size (cm)	Days to Calving (days)	Carcass Wt. (kg)	Eye Muscle Area (sq.cm)	Rib Fat (mm)	Rump Fat (mm)	Retail Beef Yield (%)	IMF (%)	Angus. Breed. Index (\$)	Dom. Index (\$)	Hvy. Grain. Index (\$)	Hvy. Grass. Index (\$)
EBV	-0.3	-2.1	-2.7	+4.4	+44	+76	+100	+84	+20	+0.8	-2.3	+61	+6.0	-1.6	-2.4	+1.2	+1.9	+\$96	+\$99	+\$99	+\$96
ACC	43%	37%	62%	70%	64%	64%	62%	59%	49%	68%	34%	54%	53%	54%	55%	50%	47%				

Traits Observed: BWT, 200WT, 400WT, SS, FAT, EMA, IMF

A very well muscled, stout, correct son of Total J215. Excellent maternal genetics with plenty of IMF.

Purchaser: \$

LOT 37 SPRYS-W NOVAC L526 (APR) (AI)

DOB: 16/08/2015

Ident No.: LGSL526

Genetic Status: AMFU, NHFU, CAFU, DD3%

BON VIEW NEW DESIGN 208

B/R NEW DESIGN 036

TC TOTAL 410

P A R B DESIGN PLUS 97

TC ERICA EILEEN 2047

P A R B PRIMROSE 5968

Sire: LAWSONS NOVAC E313 (AI)

Dam: COOLANA A316 (APR) (AI)

G A R PREDESTINED

SITZ TRAVELER 8180

LAWSONS PREDESTINED B770 (AI) (ET)

COOLANA T127 (APR) (AI)

G A R FUTURE DIRECTION L84 (ET)

COOLANA R250 (APR)

MEASUREMENTS

Scrotal Size |

Weight |

March 2017 Angus Australia BREEDPLAN

	Calving Ease DIR (%)	Calving Ease DTRS (%)	Gest Length (days)	Birth Wt. (kg)	200 Day Wt. (kg)	400 Day Wt. (kg)	600 Day Wt. (kg)	Mat. Cow Wt. (kg)	Milk (kg)	Scrotal Size (cm)	Days to Calving (days)	Carcass Wt. (kg)	Eye Muscle Area (sq.cm)	Rib Fat (mm)	Rump Fat (mm)	Retail Beef Yield (%)	IMF (%)	Angus. Breed. Index (\$)	Dom. Index (\$)	Hvy. Grain. Index (\$)	Hvy. Grass. Index (\$)
EBV	-6.3	-1.3	-2.9	+5.0	+44	+77	+99	+83	+12	+1.1	-4.1	+52	+2.4	-1.5	-1.7	+0.7	+1.8	+\$87	+\$90	+\$89	+\$86
ACC	58%	53%	85%	75%	71%	71%	70%	68%	64%	74%	44%	63%	63%	63%	64%	59%	58%				

Traits Observed: GL, BWT, 200WT, 400WT, SS, FAT, EMA, IMF

Extremely sound, easy doing Novak son out of a very good thick, stout A316 female.

Purchaser: \$

LOT 38 SPRYS-W BERKLEY L552

DOB: 11/08/2015

Ident No.: LGSL552

Genetic Status: DDC, AMFU, NHFU, CAFU

TE MANIA YORKSHIRE Y437 (AI)

SITZ NEW DESIGN 458N

TE MANIA BERKLEY B1 (AI)

THE LAURELS GRANITE G90 (AI) (ET)

TE MANIA LOWAN Z53 (AI) (ET)

THE LAURELS CLARINET C40

Sire: MYANGA BERKLEY J141 (AI)

Dam: A.J.M. J4

DSK HLE BRUTE STRENGTH B24 (AI)

VERMONT RIGHT TIME 24J D091 (AI) (ET)

MYANGA CONCHITA E41

A.J.M. ESTER F5

MYANGA CONCHITA Y22

VERMONT ESTER D283 (AI)

MEASUREMENTS

Scrotal Size |

Weight |

March 2017 Angus Australia BREEDPLAN

	Calving Ease DIR (%)	Calving Ease DTRS (%)	Gest Length (days)	Birth Wt. (kg)	200 Day Wt. (kg)	400 Day Wt. (kg)	600 Day Wt. (kg)	Mat. Cow Wt. (kg)	Milk (kg)	Scrotal Size (cm)	Days to Calving (days)	Carcass Wt. (kg)	Eye Muscle Area (sq.cm)	Rib Fat (mm)	Rump Fat (mm)	Retail Beef Yield (%)	IMF (%)	Angus. Breed. Index (\$)	Dom. Index (\$)	Hvy. Grain. Index (\$)	Hvy. Grass. Index (\$)
EBV	+1.5	+2.2	-3.9	+5.9	+56	+101	+136	+132	+13	+3.1	-3.9	+78	+5.2	-1.8	-2.6	+1.4	+2.0	+\$138	+\$124	+\$155	+\$131
ACC	34%	31%	46%	54%	58%	60%	58%	51%	39%	65%	33%	49%	48%	47%	50%	44%	41%				

Traits Observed: 200WT, 400WT, SS, FAT, EMA, IMF

L552 has plenty of growth and depth and has always exhibited the softness and suppleness of his skin type. Great data set.

Purchaser: \$



LOT 39 SPRYS-W NOVAC L507 (APR) (AI)

DOB: 21/07/2015 Ident No.: LGSL507 Genetic Status: AMFU, NHFU, CAFU, DD2%

BON VIEW NEW DESIGN 208
TC TOTAL 410
TC ERICA EILEEN 2047

BANQUET ZEALFUL 2021
LONGFORD ZEALFUL D17
LONGFORD PRUE Z10 (AI)
G A R EVAS CONVERGENCE 3403
TUCKLAN CONVERGENCE B250 (APR) (AI)
TUCKLAN DIRECTION Z192 (APR)

Sire: LAWSONS NOVAK E313 (AI)

Dam: TUCKLAN ZEALFUL F306 (APR)

G A R PREDESTINED
LAWSONS PREDESTINED B770 (AI) (ET)
G A R FUTURE DIRECTION L84 (ET)

MEASUREMENTS	
Scrotal Size	
Weight	

March 2017 Angus Australia BREEDPLAN

	Calving Ease DIR (%)	Calving Ease DTRS (%)	Gest Length (days)	Birth Wt. (kg)	200 Day Wt. (kg)	400 Day Wt. (kg)	600 Day Wt. (kg)	Mat. Cow Wt. (kg)	Milk (kg)	Scrotal Size (cm)	Days to Calving (days)	Carcase Wt. (kg)	Eye Muscle Area (sq.cm)	Rib Fat (mm)	Rump Fat (mm)	Retail Beef Yield (%)	IMF (%)	Angus. Breed. Index (\$)	Dom. Index (\$)	Hvy. Grain. Index (\$)	Hvy. Grass. Index (\$)
EBV	-3.8	-0.4	-2.7	+4.0	+44	+78	+101	+81	+13	+0.9	-5.3	+56	+3.1	-0.4	+0.3	-0.7	+2.3	+\$99	+\$95	+\$103	+\$97
ACC	52%	47%	83%	73%	68%	69%	68%	64%	58%	71%	38%	60%	60%	61%	61%	56%	55%				

Traits Observed: GL, BWT, 200WT, 400WT, SS, FAT, EMA, IMF

Plenty of length of body with little extra frame than some of his mates in the sale.

Purchaser: \$

LOT 40 SPRYS-W TOTAL L551 (APR)

DOB: 15/10/2015 Ident No.: LGSL551 Genetic Status: AMFU, NHFU, CAFU, DDFU

TEHAMA TOTAL M811
SILVEIRAS M811 TOTAL 6103
SILVEIRA ELBA 3309

LEACHMAN RIGHT TIME
HYLINE RIGHT TIME 338 (ET)
HYLINE PRIDE 265 (ET)
KAPP DESIGNER
COOLANA X311 (AI)
COOLANA N131 (APR)

Sire: COOLANA TOTAL J215 (AI)

Dam: COOLANA C492 (APR) (AI)

HYLINE RIGHT TIME 338 (ET)
COOLANA JANET D91 (AI)
COOLANA JANET A2 (ACR) (AI) (ET)

MEASUREMENTS	
Scrotal Size	
Weight	

March 2017 Angus Australia BREEDPLAN

	Calving Ease DIR (%)	Calving Ease DTRS (%)	Gest Length (days)	Birth Wt. (kg)	200 Day Wt. (kg)	400 Day Wt. (kg)	600 Day Wt. (kg)	Mat. Cow Wt. (kg)	Milk (kg)	Scrotal Size (cm)	Days to Calving (days)	Carcase Wt. (kg)	Eye Muscle Area (sq.cm)	Rib Fat (mm)	Rump Fat (mm)	Retail Beef Yield (%)	IMF (%)	Angus. Breed. Index (\$)	Dom. Index (\$)	Hvy. Grain. Index (\$)	Hvy. Grass. Index (\$)
EBV	-1.4	+1.0	-2.5	+4.8	+42	+77	+104	+90	+17	+1.1	-2.8	+58	+3.0	-1.8	-1.7	+0.7	+2.0	+\$100	+\$98	+\$106	+\$98
ACC	44%	39%	63%	71%	63%	63%	62%	60%	49%	65%	38%	54%	52%	52%	53%	49%	46%				

Traits Observed: BWT, 200WT, 400WT, SS, FAT, EMA, IMF

A very correct, clean, long fronted bull with clean shoulder set. Double cross of Right Time 338 who really excels with maternal traits.

Purchaser: \$

3/4 ANGUS X 1/4 SHORTHORN BULLS

LOT 41 SPRYS-W JOHNO L525 (MBR)

DOB: 15/08/2015 Ident No.: LGSL525 Genetic Status: CAF, DDF, AMFU, NHFU

COOTA PARK D132 (MBR)
COOTA PARK BLUE-E F258 (MBR)
COOTA PARK B164 (MBR)
Sire: COOTA PARK H278 (MBR) (RED)
COOTA PARK Z93 (MBR)
COOTA PARK B170 (MBR)
COOTA PARK Y206 (MBR)

TE MANIA KNIGHT K206+90 (AI) (ET)
TE MANIA ULONG U41 (AI) (ET)
TE MANIA LOWAN Q42 (AI) (ET)
PATAWALLA W69 (AI) (ET)
PATAWALLA Y7
PATAWALLA NPYW29

Dam: PATAWALLA E35 (AI)

MEASUREMENTS	
Scrotal Size	
Weight	

March 2017 Angus Australia BREEDPLAN

	Calving Ease DIR (%)	Calving Ease DTRS (%)	Gest Length (days)	Birth Wt. (kg)	200 Day Wt. (kg)	400 Day Wt. (kg)	600 Day Wt. (kg)	Mat. Cow Wt. (kg)	Milk (kg)	Scrotal Size (cm)	Days to Calving (days)	Carcase Wt. (kg)	Eye Muscle Area (sq.cm)	Rib Fat (mm)	Rump Fat (mm)	Retail Beef Yield (%)	IMF (%)	Angus. Breed. Index (\$)	Dom. Index (\$)	Hvy. Grain. Index (\$)	Hvy. Grass. Index (\$)
EBV	-1.2	-1.3	-3.0	+5.3	+38	+66	+87	+86	+9	+1.8	-2.0	+44	+4.9	-1.6	-1.9	+1.1	+1.3	+\$79	+\$88	+\$76	+\$82
ACC	37%	30%	47%	69%	62%	63%	59%	54%	42%	66%	32%	52%	52%	52%	54%	48%	43%				

Traits Observed: BWT, 200WT, 400WT, SS, FAT, EMA, IMF

A great MBR bull who is by our super impressive Coota Park H278 sire. Excellent feed efficiency data. His progeny will make extra dollars for the feedlotter (a feedlotter's dream).

Purchaser: \$



LOT 42 SPRYS-W JOHNO L531 (MBR)

DOB: 20/08/2015 **Ident No.:** LGSL531 Genetic Status: **AMF, NHF, DDF, CAFU**

COOTA PARK D132 (MBR)
 COOTA PARK BLUE-E F258 (MBR)
 COOTA PARK B164 (MBR)
Sire: COOTA PARK H278 (MBR) (RED)
 COOTA PARK Z93 (MBR)
 COOTA PARK B170 (MBR)
 COOTA PARK Y206 (MBR)

G A R SOLUTION (ET)
 LAWSONS INVINCIBLE C402 (AI)
 LAWSONS PREDESTINED A598 (AI)
Dam: PATAWALLA H18 (APR) (AI)
 PATAWALLA WILDFIRE Z43
 PATAWALLA B21 (APR)
 PATAWALLA NPYX7 (APR) (AI)

MEASUREMENTS	
Scrotal Size	
Weight	

March 2017 Angus Australia BREEDPLAN

	Calving Ease DIR (%)	Calving Ease DTRS (%)	Gest Length (days)	Birth Wt. (kg)	200 Day Wt. (kg)	400 Day Wt. (kg)	600 Day Wt. (kg)	Mat. Cow Wt. (kg)	Milk (kg)	Scrotal Size (cm)	Days to Calving (days)	Carcase Wt. (kg)	Eye Muscle Area (sq.cm)	Rib Fat (mm)	Rump Fat (mm)	Retail Beef Yield (%)	IMF (%)	Angus. Breed. Index (\$)	Dom. Index (\$)	Hvy. Grain. Index (\$)	Hvy. Grass. Index (\$)
EBV	-2.2	-3.8	-1.7	+5.3	+37	+63	+83	+83	+6	+0.1	-1.2	+49	+3.7	-1.6	-0.8	-0.1	+1.6	+\$66	+\$77	+\$60	+\$71
ACC	36%	29%	47%	64%	60%	58%	56%	52%	41%	64%	29%	49%	50%	50%	52%	47%	43%				

Traits Observed: BWT, 200WT, SS, FAT, EMA, IMF

Another excellent bull by H278 who is one of the most impressive Sires you will see who really excels in feed efficiency and capacity.

Purchaser: \$

LOT 43 SPRYS-W JOHNO L538 (UNREGISTERED)

DOB: 29/08/2015 **Ident No.:** LGSL538 Genetic Status:

COOTA PARK D132 (MBR)
 COOTA PARK BLUE-E F258 (MBR)
 COOTA PARK B164 (MBR)
Sire: COOTA PARK H278 (MBR) (RED)
 COOTA PARK Z93 (MBR)
 COOTA PARK B170 (MBR)
 COOTA PARK Y206 (MBR)

ARDROSSAN EQUATOR D19 (AI)
Dam: SPRYS EQUATORS GOVERNESS G216 (APR) (AI) (TW)
 COOLANA X334 (APR) (AI) (ET)

MEASUREMENTS	
Scrotal Size	
Weight	

Purchaser: \$



LOT 42 - SPRYS-W JOHNO L531 (MBR)



SHORTHORN BULLS

LOT 44

SPRYS CHERRY'S BALANCE L57 (P/S)

DOB: 17/07/2015

Colour: Red Little White

Ident No.: GLSL57

COOLONG XSS574 (P) (SFA) Red Little White

GLENELL IMF B90 (P) Red

GLENELL IMF B90 (P) Red

SPRYS HOPES IMF G13 (P) (AI) Red

GLENELL X154 (P) (SFA)

SPRYS ROCKETS HOPE D112 (P) Red

Sire: OUTBACK SPRYS BALANCE G266 (P) (ET) (AI) Red

Dam: SPRYS IMF'S CHERRY J50 (P) Red Little White

SPRYS RED URANUS V112 (H) (AI) Red

WEEBOLLABOLLA WARATAH W26 (P) (AI) Red

SCHULLER RED KATE C1 (P) (TWIN) (AI) Red

LONE PINE CHERRY E028 (P) (AI) Roan

SPRYS LEGENDS KATE Y031 (P) (ET) (AI) Red

LONE PINE CHERRY A064 (P) Roan

MEASUREMENTS

Scrotal Size |

Weight |

February 2017 Shorthorn GROUP BREEDPLAN

	Calving Ease DIR (%)	Calving Ease DTRS (%)	Gestation Length (days)	Birth Wt. (kg)	200 Day Wt. (kg)	400 Day Wt. (kg)	600 Day Wt. (kg)	Mat. Cow Wt. (kg)	Milk (kg)	Scrotal Size (cm)	Days to Calving (days)	Carcase Wt. (kg)	Eye Muscle Area (sq.cm)	Rib Fat (mm)	Rump Fat (mm)	Retail Beef Yield (%)	IMF (%)	Dom. Mat. Index (\$)	Export Mat. Index (\$)	Nth Mat. Index (\$)
EBV	+4.3	+3.6	+0.3	+0.3	+18	+32	+21	+13	+4	+1.6	-3.7	+21	+1.1	+3.3	+7.2	-2.2	+0.8	+\$46	+\$30	+\$44
ACC	46%	38%	51%	74%	70%	68%	74%	59%	39%	71%	42%	57%	57%	63%	63%	57%	48%			

Traits Observed: CE, BWT, 200WT, 600WT, SS, FAT, EMA, IMF

No. 1 bull for Rib & Rump fat EBV's for 2015 Drop bulls.

Ideal bull for heifers. Extra fat cover EBV's and excellent IMF. His dam is in our Donor programme with some top calves by Primroses Buddy J17.

Top 5% for BW & IMF & Domestic. Top 20% Calving ease direct & calving ease daughters.

Purchaser: \$

LOT 45

OUTBACK SPRYS CANYON L289 (P)

DOB: 10/09/2015

Colour: Roan

Ident No.: OB L289

BYLAND LEGACY SRD15 ET (H) Red

ROCKDELL PRIDE 50K (IMP CAN) (P) Red Little White

JR LEGEND 78H (IMP USA) (P) Red

SPRYS PERFECTION B060 (P) (ET) (AI) Red Little White

JR FANCY LADY 96E (P) Red Little White

NARRALDA UNEATA N48 (P) (AI) Red Little White

Sire: SPRYS TLC CANYON C056 (P) (AI) Red

Dam: SPRYS PERFECTIONS CARNATION C184 (P) Roan

THE GROVE KASPROWICZ W791 (P) Red

SPRYS ZAMBESI 2ND (P) (DS) Roan

THE GROVE PRIMROSE A742 (P) (ET) (AI) Red

SPRYS ZAMS CARNATION Y050 (P) (ET) (AI) Roan

THE GROVE PRIMROSE R202 (P) Red

MARRINGTON CARNATION (P) (ET) (AI) Red

MEASUREMENTS

Scrotal Size |

Weight |

February 2017 Shorthorn GROUP BREEDPLAN

	Calving Ease DIR (%)	Calving Ease DTRS (%)	Gestation Length (days)	Birth Wt. (kg)	200 Day Wt. (kg)	400 Day Wt. (kg)	600 Day Wt. (kg)	Mat. Cow Wt. (kg)	Milk (kg)	Scrotal Size (cm)	Days to Calving (days)	Carcase Wt. (kg)	Eye Muscle Area (sq.cm)	Rib Fat (mm)	Rump Fat (mm)	Retail Beef Yield (%)	IMF (%)	Dom. Mat. Index (\$)	Export Mat. Index (\$)	Nth Mat. Index (\$)
EBV	+3.8	+0.3	-1.4	+3.5	+30	+39	+57	+43	+6	+1.6	-2.1	+34	+0.9	-0.2	+0.4	-0.3	+0.5	+\$31	+\$31	+\$44
ACC	43%	37%	43%	72%	66%	69%	64%	55%	41%	69%	42%	51%	55%	61%	61%	55%	46%			

Traits Observed: BWT, 200WT, 400WT, SS, FAT, EMA, IMF

Another well balanced son of the ever reliable Canyon sire who is slick skinned and fine haired.

Purchaser: \$

LOT 46

SPRYS BULLS EYE L256 (P)

DOB: 26/09/2015

Colour: Red Little White

Ident No.: GLSL256

SPRYS RED ROCKET B069 (P) (ET) (AI) Red

WAUKARU GOLD CARD 5042 (IMP USA) (P) Red

ELOORA WINCHESTER E17 (P) (AI) Red Little White

WAUKARU PATENT 8161 (IMP USA) (P) (ET) Red

ELOORA LAVENDAR Z50 (P) (AI) Red

WAUKARU 12H MELITA ROSE 5021 (H) Red

Sire: SPRYS ON TARGET H189 (P) Red

Dam: SPRYS PATENTS SAL G254 (P) (AI) Roan

SPRYS SUPERSTAR (P) Red Little White

EXMOOR DYNAMITE Y108 (P) Roan

SPRYS SUPERSTARS MAID D014 (P) (ET) (AI) Red

SPRYS D0455 (P) (SFA) Red

SPRYS MAID X147 (P) Red

CROWN Z214 (P) (SFA) Roan

MEASUREMENTS

Scrotal Size |

Weight |

February 2017 Shorthorn GROUP BREEDPLAN

	Calving Ease DIR (%)	Calving Ease DTRS (%)	Gestation Length (days)	Birth Wt. (kg)	200 Day Wt. (kg)	400 Day Wt. (kg)	600 Day Wt. (kg)	Mat. Cow Wt. (kg)	Milk (kg)	Scrotal Size (cm)	Days to Calving (days)	Carcase Wt. (kg)	Eye Muscle Area (sq.cm)	Rib Fat (mm)	Rump Fat (mm)	Retail Beef Yield (%)	IMF (%)	Dom. Mat. Index (\$)	Export Mat. Index (\$)	Nth Mat. Index (\$)
EBV	-0.7	-2.8	-2.0	+2.9	+30	+46	+53	+30	+7	+1.6	-0.3	+36	+4.9	-0.7	-1.5	+1.5	+0.4	+\$30	+\$30	+\$36
ACC	35%	27%	42%	59%	62%	59%	62%	51%	33%	60%	33%	47%	44%	50%	50%	45%	36%			

Traits Observed: BWT, 200WT, 600WT, SS, FAT, EMA, IMF

We have been really impressed with L256 since he was a young calf, medium maturity, excellent carcass shape with above average performance. You can certainly buy this bull with confidence.

Top 15% for 400 wt.

Purchaser: \$



LOT 47 OUTBACK SPRYS SOLID L280 (P)

DOB: 20/08/2015 **Colour:** Roan **Ident No.:** OB L280

WAUKARU GOLD CARD 5042 (IMP USA) (P) Red
 WAUKARU PATENT 8161 (IMP USA) (P) (ET) Red
 WAUKARU 12H MELITA ROSE 5021 (H) Red

JR LEGEND 78H (IMP USA) (P) Red
 SPRYS TRUE BLUE Y033 (P) (ET) (AI) Red
 MOOMBI KATE S50 (P) Roan

Sire: SPRYS ROCK SOLID H5 (P) (ET) (AI) Red

Dam: OUTBACK CARNATION G173 (P) (ET) (AI) Roan

EDEN PARK STOCKMAN (P) (AI) Red
 SCHULLER ANN B47 (P) Red
 CHADWICK R127 (H) (SFA) Roan

SPRYS ZAMBESI 2ND (P) (DS) Roan
 SPRYS ZAMS CARNATION Y050 (P) (ET) (AI) Roan
 MARRINGTON CARNATION (P) (ET) (AI) Red

MEASUREMENTS	
Scrotal Size	
Weight	

February 2017 Shorthorn GROUP BREEDPLAN

	Calving Ease DIR (%)	Calving Ease DTRS (%)	Gestation Length (days)	Birth Wt. (kg)	200 Day Wt. (kg)	400 Day Wt. (kg)	600 Day Wt. (kg)	Mat. Cow Wt. (kg)	Milk (kg)	Scrotal Size (cm)	Days to Calving (days)	Carcase Wt. (kg)	Eye Muscle Area (sq.cm)	Rib Fat (mm)	Rump Fat (mm)	Retail Beef Yield (%)	IMF (%)	Dom. Mat. Index (\$)	Export Mat. Index (\$)	Nth Mat. Index (\$)
EBV	-7.1	-2.9	-1.2	+5.0	+38	+54	+71	+56	+7	+1.5	+1.4	+43	+5.9	-1.3	-2.9	+1.7	+0.4	+\$19	+\$21	+\$27
ACC	44%	36%	45%	73%	68%	71%	66%	58%	41%	70%	43%	54%	57%	63%	63%	57%	48%			

Traits Observed: BWT, 200WT, 400WT, SS, FAT, EMA, IMF

Two crosses Sprys Zambesi 2nd - all Aussie Genetics. Add weight and EMA to your calves with this Rock Solid bull.
Top 5% for 200, 400 & 600 wt. Top 10% for RBV. Top 15% for EMA.

Purchaser: \$

LOT 48 OUTBACK SPRYS SOLID L282 (P)

DOB: 21/08/2015 **Colour:** Red **Ident No.:** OB L282

WAUKARU GOLD CARD 5042 (IMP USA) (P) Red
 WAUKARU PATENT 8161 (IMP USA) (P) (ET) Red
 WAUKARU 12H MELITA ROSE 5021 (H) Red

GLENELL IMF B90 (P) Red
 SPRYS SOLUTION E006 (P) Red
 SPRYS AC. ULTIMATE M. NIAM A101 (P) (ET) (AI) Red Little White

Sire: SPRYS ROCK SOLID H5 (P) (ET) (AI) Red

Dam: OUTBACK ANN H154 (H) Roan

EDEN PARK STOCKMAN (P) (AI) Red
 SCHULLER ANN B47 (P) Red
 CHADWICK R127 (H) (SFA) Roan

LACHLAN MASTER CARD (P) (ET) Roan
 OUTBACK ANN E102 (H) Red Little White
 SCHULLER ANN B47 (P) Red

MEASUREMENTS	
Scrotal Size	
Weight	

February 2017 Shorthorn GROUP BREEDPLAN

	Calving Ease DIR (%)	Calving Ease DTRS (%)	Gestation Length (days)	Birth Wt. (kg)	200 Day Wt. (kg)	400 Day Wt. (kg)	600 Day Wt. (kg)	Mat. Cow Wt. (kg)	Milk (kg)	Scrotal Size (cm)	Days to Calving (days)	Carcase Wt. (kg)	Eye Muscle Area (sq.cm)	Rib Fat (mm)	Rump Fat (mm)	Retail Beef Yield (%)	IMF (%)	Dom. Mat. Index (\$)	Export Mat. Index (\$)	Nth Mat. Index (\$)
EBV	-8.1	-1.1	+0.1	+4.5	+38	+57	+73	+55	+6	+1.1	+0.9	+42	+4.8	-0.8	-1.6	+1.5	+0.4	+\$24	+\$22	+\$31
ACC	42%	33%	43%	73%	68%	71%	66%	58%	39%	70%	42%	53%	57%	63%	63%	57%	47%			

Traits Observed: BWT, 200WT, 400WT, SS, FAT, EMA, IMF

Add some real performance with L282 . . . more kgs in your calves. Really impressed with the Rock Solid X Solution E006 cross. Slick coated is a real bonus. We have excellent carcass feedback data who go back to the Solution E006 sire.
Top 5% for 200, 400 & 600 wt. Top 10% for RBV.

Purchaser: \$

LOT 49 OUTBACK SPRYS M PACKER L271 (P) (AI)

DOB: 01/08/2015 **Colour:** Roan **Ident No.:** OB L271

MARELLAN EMERALD (P) (AI) Red and White
 NAGOL PARK E.M ZONE 2003 (P) Roan
 NAGOL PARK Y2K LADY BELLE X002 (P) (AI) Roan

SPRYS MASTER BLASTER Z039 (P) Roan
 LACHLAN MASTER CARD (P) (ET) Roan
 THE GROVE DALE Z046 (P) (ET) (AI) Red

Sire: KAMILAROI MEAT PACKER (P) (AI) Roan

Dam: OUTBACK UNA F54 (P) Red

JR LEGEND 78H (IMP USA) (P) Red
 TLC ERICA X002 (P) (ET) (AI) Red
 HIGHDENUP FRANCES (P) (AI) Red Little White

SPRYS TRUE BLUE Y033 (P) (ET) (AI) Red
 JOVE TRUE BLUE UNA 1181 (P) (AI) Red
 JOVE UNA 1ST 1061 (P) (ET) (AI) Red

MEASUREMENTS	
Scrotal Size	
Weight	

February 2017 Shorthorn GROUP BREEDPLAN

	Calving Ease DIR (%)	Calving Ease DTRS (%)	Gestation Length (days)	Birth Wt. (kg)	200 Day Wt. (kg)	400 Day Wt. (kg)	600 Day Wt. (kg)	Mat. Cow Wt. (kg)	Milk (kg)	Scrotal Size (cm)	Days to Calving (days)	Carcase Wt. (kg)	Eye Muscle Area (sq.cm)	Rib Fat (mm)	Rump Fat (mm)	Retail Beef Yield (%)	IMF (%)	Dom. Mat. Index (\$)	Export Mat. Index (\$)	Nth Mat. Index (\$)
EBV	-0.5	+3.9	-0.7	+3.6	+27	+36	+51	+29	+6	+2.9	-3.0	+29	+2.4	-1.5	-2.3	+1.5	+0.8	+\$30	+\$41	+\$38
ACC	42%	35%	66%	73%	68%	70%	65%	58%	41%	70%	43%	52%	55%	62%	62%	56%	46%			

Traits Observed: GL, BWT, 200WT, 400WT, SS, FAT, EMA, IMF

The first Meat Packer son to be offered at Auction who has three crosses of the Super Sire, JR Legend.
Top 10% for Export Maternal.

Purchaser: \$



LOT 50 SPRYS GOVERNOR L37 (P/S) (SFA)

DOB: 09/08/2015 **Colour:** White **Ident No.:** GLSL37

GLENELL IMF B90 (P) Red
 SPRYS IMF'S LEGEND E020 (P) Red Little White
 SPRYS LEGENDS MARGLORY Y069 (P) (ET) (AI) Roan
Sire: GLENGYRON GOVERNOR (P) Red Little White
 SPRYS PIONEER A201 (P) (ET) (AI) Red Little White
 GLENGYRON ROSE 66 (P) Red Little White
 GLENGYRON ROSE 43RD (P) Red

Dam: D1119 (P) (SFA) Roan GLSD1119

MEASUREMENTS	
Scrotal Size	
Weight	

February 2017 Shorthorn GROUP BREEDPLAN

	Calving Ease DIR (%)	Gestation Length (days)	Birth Wt. (kg)	200 Day Wt. (kg)	400 Day Wt. (kg)	600 Day Wt. (kg)	Mat. Cow Wt. (kg)	Milk (kg)	Scrotal Size (cm)	Days to Calving (days)	Carcass Wt. (kg)	Eye Muscle Area (sq.cm)	Rib Fat (mm)	Rump Fat (mm)	Retail Beef Yield (%)	IMF (%)	Dom. Mat. Index (\$)	Export Mat. Index (\$)	Nth Mat. Index (\$)
EBV	+1.9	-2.0	+1.3	+21	+34	+41	+31	+2	-0.2	+1.1	+30	+4.3	-0.2	-0.3	+1.0	+0.8	+\$31	+\$38	+\$39
ACC	29%	44%	58%	63%	60%	68%	50%	34%	66%	33%	49%	48%	57%	57%	50%	39%			

Traits Observed: 200WT, 600WT, SS, FAT, EMA, IMF

A low birth, white bull who has great length, good Rib & Rump EBV's with high IMF. Dam is a tremendous female, medium, very stout and long and an outstanding son sold in last year's sale.

Top 5% for IMF.

Purchaser: \$

LOT 51 SPRYS GOVERNOR L63 (P) (TWIN)

DOB: 18/07/2015 **Colour:** Red Little White **Ident No.:** GLSL63

GLENELL IMF B90 (P) Red
 SPRYS IMF'S LEGEND E020 (P) Red Little White
 SPRYS LEGENDS MARGLORY Y069 (P) (ET) (AI) Roan
Sire: GLENGYRON GOVERNOR (P) Red Little White
 SPRYS PIONEER A201 (P) (ET) (AI) Red Little White
 GLENGYRON ROSE 66 (P) Red Little White
 GLENGYRON ROSE 43RD (P) Red

FUTURITY OUTBACK W1 (P) (ET) (AI) Red
 SPRYS JUST RIGHT Z077 (P) (AI) Red
 COONARDOO 964 (P) (SFA) Red
Dam: SPRYS J.R MAY QUEEN F45 (P) Red
 TREVINO ULTIMATE 2ND (P) Red
 NEEARRA MAY QUEEN C24 (P) (AI) Roan
 NEEARRA MAY QUEEN 15 (P) Roan

MEASUREMENTS	
Scrotal Size	
Weight	

February 2017 Shorthorn GROUP BREEDPLAN

	Calving Ease DIR (%)	Calving Ease DTRS (%)	Gestation Length (days)	Birth Wt. (kg)	200 Day Wt. (kg)	400 Day Wt. (kg)	600 Day Wt. (kg)	Mat. Cow Wt. (kg)	Milk (kg)	Scrotal Size (cm)	Days to Calving (days)	Carcass Wt. (kg)	Eye Muscle Area (sq.cm)	Rib Fat (mm)	Rump Fat (mm)	Retail Beef Yield (%)	IMF (%)	Dom. Mat. Index (\$)	Export Mat. Index (\$)	Nth Mat. Index (\$)
EBV	+2.0	+1.3	-1.4	+1.5	+21	+29	+33	+25	+4	+1.2	-1.3	+28	+4.3	-0.4	-0.7	+1.1	+0.8	+\$30	+\$36	+\$33
ACC	37%	29%	44%	61%	62%	60%	65%	52%	35%	62%	35%	50%	49%	56%	56%	50%	41%			

Traits Observed: 200WT, 600WT, SS, FAT, EMA, IMF

Should be okay for heifers and cows. A low birth, high IMF bull who has excellent balance and out of a very productive mum. Full brother to Lot 15 (Twin). **Top 15% for BW & IMF.**

Purchaser: \$

LOT 52 SPRYS BLANCHES BALANCE L43 (P/S)

DOB: 04/07/2015 **Colour:** Roan **Ident No.:** GLSL43

COOLONG XSS574 (P) (SFA) Red Little White
 GLENELL IMF B90 (P) Red
 GLENELL X154 (P) (SFA)
Sire: OUTBACK SPRYS BALANCE G266 (P) (ET) (AI) Red
 SPRYS RED URANUS V112 (H) (AI) Red
 SCHULLER RED KATE C1 (P) (TWIN) (AI) Red
 SPRYS LEGENDS KATE Y031 (P) (ET) (AI) Red

THE GROVE OSCAR A748 (P) (ET) (AI) Red
 YAMBURGAN OSSIE D59 (P) (AI) Red
 YAMBURGAN VIOLA 8TH (H) Red
Dam: SPRYS OSSIES BLANCHE J42 (P) (AI) Roan
 BROUGHTON PARK VICTORY B050 (P) Red Little White
 LAKE HAWDON BLANCHE E25 (P) (TWIN) Roan
 LAKE HAWDON BEVERLEY BLANCHE (P) (AI) Roan

MEASUREMENTS	
Scrotal Size	
Weight	

February 2017 Shorthorn GROUP BREEDPLAN

	Calving Ease DIR (%)	Calving Ease DTRS (%)	Gestation Length (days)	Birth Wt. (kg)	200 Day Wt. (kg)	400 Day Wt. (kg)	600 Day Wt. (kg)	Mat. Cow Wt. (kg)	Milk (kg)	Scrotal Size (cm)	Days to Calving (days)	Carcass Wt. (kg)	Eye Muscle Area (sq.cm)	Rib Fat (mm)	Rump Fat (mm)	Retail Beef Yield (%)	IMF (%)	Dom. Mat. Index (\$)	Export Mat. Index (\$)	Nth Mat. Index (\$)
EBV	-3.1	+1.9	+0.5	+2.1	+18	+33	+24	+20	+4	+0.8	-0.4	+23	+3.6	+2.9	+6.0	-1.4	+1.0	+\$31	+\$22	+\$27
ACC	45%	38%	54%	73%	69%	67%	73%	60%	39%	70%	43%	56%	57%	63%	63%	57%	47%			

Traits Observed: CE, BWT, 200WT, 600WT, SS, FAT, EMA, IMF

Should be okay for heifers and cows. A well balanced, medium framed bull in a good genetic package. Dam is in our Donor programme and is a very impressive female. Grand Dam was top priced Cow at Lake Hawdon dispersal.

Top 1% for Rib & Rump fat & IMF. Top 20% for BW.

Purchaser: \$



LOT 53 SPRYS BALANCE L51 (P)

DOB: 09/07/2015 **Colour:** Red Little White **Ident No.:** GLSL51

COOLONG XSS74 (P) (SFA) Red Little White
 GLENELL IMF B90 (P) Red
 GLENELL X154 (P) (SFA)

GLENELL IMF B90 (P) Red
 SPRYS HOPES IMF G13 (P) (AI) Red
 SPRYS ROCKETS HOPE D112 (P) Roan
 MARELLAN EMERALD (P) (AI) Red and White
 SPRYS MISS EMERALD (P) (AI) Roan
 SPRYS WAGMANS CLASS A182 (P) Roan

Sire: **OUTBACK SPRYS BALANCE G266 (P) (ET) (AI) Red**
 SPRYS RED URANUS V112 (H) (AI) Red
 SCHULLER RED KATE C1 (P) (TWIN) (AI) Red
 SPRYS LEGENDS KATE Y031 (P) (ET) (AI) Red

Dam: **DROMORE EMERALD JEMM (P) Roan**

MEASUREMENTS	
Scrotal Size	
Weight	

February 2017 Shorthorn GROUP BREEDPLAN

	Calving Ease DIR (%)	Calving Ease DTRS (%)	Gestation Length (days)	Birth Wt. (kg)	200 Day Wt. (kg)	400 Day Wt. (kg)	600 Day Wt. (kg)	Mat. Cow Wt. (kg)	Milk (kg)	Scrotal Size (cm)	Days to Calving (days)	Carcase Wt. (kg)	Eye Muscle Area (sq.cm)	Rib Fat (mm)	Rump Fat (mm)	Retail Beef Yield (%)	IMF (%)	Dom. Mat. Index (\$)	Export Mat. Index (\$)	Nth Mat. Index (\$)
EBV	-5.8	-1.0	+1.9	+4.3	+32	+50	+54	+33	+5	+0.9	+1.7	+29	+2.4	+1.8	+4.0	-1.2	+0.8	+\$26	+\$19	+\$30
ACC	46%	39%	50%	74%	70%	68%	74%	61%	40%	71%	43%	57%	57%	64%	63%	58%	48%			

Traits Observed: CE, BWT, 200WT, 600WT, SS, FAT, EMA, IMF

A double bred IMF which will be a big asset in type and do-ability. An easy doing bull who has highly positive Rib & Rump EBV's. L51 Dam is breeding very well for us with a top heifer in 2016.

Top 1% for Rib & Rump fat. Top 5% for IMF. Top 10% for 400. Top 15% for 200.

Purchaser: \$

LOT 54 OUTBACK SPRYS ACE L269 (P) (AI)

DOB: 22/07/2015 **Colour:** Red **Ident No.:** OB L269

WAUKARU GOLD CARD 5042 (IMP USA) (P) Red
 WAUKARU PATENT 8161 (IMP USA) (P) (ET) Red
 WAUKARU 12H MELITA ROSE 5021 (H) Red

SPRYS RED URANUS V112 (H) (AI) Red
 SPRYS THELMAS URANUS C089 (P) (AI) Red Little White
 SPRYS LEGENDS THELMA X013 (P) (ET) (AI) Roan
 TLC ICON X003 (P) (ET) (AI) Red
 SCHULLER JUNE B35 (P) Red
 SCHULLER JUNE FX23 (P) (SFA) Red

Sire: **SPRYS PATENT'S ACE G38 (P) (ET) (AI) Roan**

Dam: **OUTBACK JUNE F46 (P) (AI) Red Little White**

SPRYS ONLY A LEGEND W026 (P) (ET) (AI) Roan
 NEEARRA JUDITH 104 (P) Roan
 NEEARRA JUDITH 67 (P) (AI) Red

MEASUREMENTS	
Scrotal Size	
Weight	

February 2017 Shorthorn GROUP BREEDPLAN

	Calving Ease DIR (%)	Calving Ease DTRS (%)	Gestation Length (days)	Birth Wt. (kg)	200 Day Wt. (kg)	400 Day Wt. (kg)	600 Day Wt. (kg)	Mat. Cow Wt. (kg)	Milk (kg)	Scrotal Size (cm)	Days to Calving (days)	Carcase Wt. (kg)	Eye Muscle Area (sq.cm)	Rib Fat (mm)	Rump Fat (mm)	Retail Beef Yield (%)	IMF (%)	Dom. Mat. Index (\$)	Export Mat. Index (\$)	Nth Mat. Index (\$)
EBV	-5.5	-2.9	-4.7	+2.3	+31	+35	+56	+33	+9	+2.1	-4.0	+35	+4.7	-0.3	-0.4	+0.9	+0.7	+\$24	+\$29	+\$33
ACC	48%	42%	71%	74%	70%	72%	68%	62%	48%	71%	47%	56%	59%	65%	65%	59%	51%			

Traits Observed: GL, BWT, 200WT, 400WT, SS, FAT, EMA, IMF

We are receiving glowing reports of the Patents Ace progeny. Really like the genetics in this promising sire. 3 crosses of a Super Shorthorn Sire, JR Legend. Many outstanding females in L269 (his daughters will make great mums).

Top 15% for Scrotal & IMF. Top 20% for 200 & Milk.

Purchaser: \$

LOT 55 OUTBACK SPRYS ACE L272 (P) (AI)

DOB: 02/08/2015 **Colour:** Roan **Ident No.:** OB L272

WAUKARU GOLD CARD 5042 (IMP USA) (P) Red
 WAUKARU PATENT 8161 (IMP USA) (P) (ET) Red
 WAUKARU 12H MELITA ROSE 5021 (H) Red

GLENELL IMF B90 (P) Red
 SPRYS SOLUTION E006 (P) Red
 SPRYS AC. ULTIMATE M. NIAM A101 (P) (ET) (AI) Red Little White
 JR LEGEND 78H (IMP USA) (P) Red
 SPRYS LEGEND ENIA Z021 (P) (TWIN) (AI) Red
 SPRYS ULYSSES ENIA R47 (P) Roan

Sire: **SPRYS PATENT'S ACE G38 (P) (ET) (AI) Roan**

Dam: **OUTBACK ENIA G124 (P) (AI) Red**

SPRYS ONLY A LEGEND W026 (P) (ET) (AI) Roan
 NEEARRA JUDITH 104 (P) Roan
 NEEARRA JUDITH 67 (P) (AI) Red

MEASUREMENTS	
Scrotal Size	
Weight	

February 2017 Shorthorn GROUP BREEDPLAN

	Calving Ease DIR (%)	Calving Ease DTRS (%)	Gestation Length (days)	Birth Wt. (kg)	200 Day Wt. (kg)	400 Day Wt. (kg)	600 Day Wt. (kg)	Mat. Cow Wt. (kg)	Milk (kg)	Scrotal Size (cm)	Days to Calving (days)	Carcase Wt. (kg)	Eye Muscle Area (sq.cm)	Rib Fat (mm)	Rump Fat (mm)	Retail Beef Yield (%)	IMF (%)	Dom. Mat. Index (\$)	Export Mat. Index (\$)	Nth Mat. Index (\$)
EBV	-7.2	-6.4	-0.7	+3.0	+32	+45	+56	+34	+5	+1.6	-0.5	+38	+6.1	-0.3	-1.1	+1.9	+0.6	+\$23	+\$25	+\$26
ACC	50%	43%	71%	74%	70%	72%	67%	62%	49%	73%	48%	56%	60%	65%	65%	60%	52%			

Traits Observed: GL, BWT, 200WT, 400WT, SS, FAT, EMA, IMF

The Patents Ace G38 crossed with Solution E006 is working very well. The progeny will certainly be impressive.

Top 10% for EMA & RBV. Top 15% for 200 wt.

Purchaser: \$



LOT 56 OUTBACK SPRYS ACE L270 (P) (AI) (SFA)

DOB: 27/07/2015 **Colour:** Red **Ident No.:** OB L270

WAUKARU GOLD CARD 5042 (IMP USA) (P) Red
 WAUKARU PATENT 8161 (IMP USA) (P) (ET) Red
 WAUKARU 12H MELITA ROSE 5021 (H) Red
Sire: SPRYS PATENT'S ACE G38 (P) (ET) (AI) Roan
 SPRYS ONLY A LEGEND W026 (P) (ET) (AI) Roan
 NEEARRA JUDITH 104 (P) Roan
 NEEARRA JUDITH 67 (P) (AI) Red

JR LEGEND 78H (IMP USA) (P) Red
 SPRYS TRUE BLUE Y033 (P) (ET) (AI) Red
 MOOMBI KATE S50 (P) Roan
Dam: SCHULLER VICTORIA B15 (P) (AI) (SFA) Red
 YARRAM ULTRABRIGHT (P) Roan
 SCHULLER VICTORIA FX25 (P) (SFA) Red

MEASUREMENTS	
Scrotal Size	
Weight	

February 2017 Shorthorn GROUP BREEDPLAN

	Calving Ease DIR (%)	Calving Ease DTRS (%)	Gestation Length (days)	Birth Wt. (kg)	200 Day Wt. (kg)	400 Day Wt. (kg)	600 Day Wt. (kg)	Mat. Cow Wt. (kg)	Milk (kg)	Scrotal Size (cm)	Days to Calving (days)	Carcase Wt. (kg)	Eye Muscle Area (sq.cm)	Rib Fat (mm)	Rump Fat (mm)	Retail Beef Yield (%)	IMF (%)	Dom. Mat. Index (\$)	Export Mat. Index (\$)	Nth Mat. Index (\$)
EBV	-6.8	-3.6	-3.5	+2.6	+31	+43	+53	+31	+6	+2.0	-1.6	+35	+4.5	-1.1	-2.2	+1.5	+0.6	+\$21	+\$23	+\$24
ACC	51%	45%	71%	74%	70%	72%	68%	61%	52%	72%	48%	56%	59%	64%	64%	59%	51%			

Traits Observed: GL, BWT, 200WT, 400WT, SS, FAT, EMA, IMF

Get the extra Yield & carcass shape from the Ace Genetics you will be impressed. We are really happy with the True Blue Y033 daughters, functional, fertile and very excellent udders and moderate mature cow weight.

Top 15% for Scrotal. Top 20% for 200.

Purchaser: \$

LOT 57 OUTBACK SPRYS SOLID L283 (P)

DOB: 22/08/2015 **Colour:** Red Little White **Ident No.:** OB L283

WAUKARU GOLD CARD 5042 (IMP USA) (P) Red
 WAUKARU PATENT 8161 (IMP USA) (P) (ET) Red
 WAUKARU 12H MELITA ROSE 5021 (H) Red
Sire: SPRYS ROCK SOLID H5 (P) (ET) (AI) Red
 EDEN PARK STOCKMAN (P) (AI) Red
 SCHULLER ANN B47 (P) Red
 CHADWICK R127 (H) (SFA) Roan

SPRYS ZAMBESI 2ND (P) (DS) Roan
 EDEN PARK STOCKMAN (P) (AI) Red
 EDEN PARK LEGENDS FRANCES W004 (P) (ET) (AI) Red
Dam: SCHULLER BLANCHE C61 (P) Red Little White
 YARRAM ULTRABRIGHT (P) Roan
 SCHULLER BLANCHE FX26 (P) (SFA) Red

MEASUREMENTS	
Scrotal Size	
Weight	

February 2017 Shorthorn GROUP BREEDPLAN

	Calving Ease DIR (%)	Calving Ease DTRS (%)	Gestation Length (days)	Birth Wt. (kg)	200 Day Wt. (kg)	400 Day Wt. (kg)	600 Day Wt. (kg)	Mat. Cow Wt. (kg)	Milk (kg)	Scrotal Size (cm)	Days to Calving (days)	Carcase Wt. (kg)	Eye Muscle Area (sq.cm)	Rib Fat (mm)	Rump Fat (mm)	Retail Beef Yield (%)	IMF (%)	Dom. Mat. Index (\$)	Export Mat. Index (\$)	Nth Mat. Index (\$)
EBV	-3.2	-1.0	-0.2	+3.4	+35	+50	+70	+51	+8	+1.5	+0.2	+44	+4.4	-0.8	-1.1	+1.5	+0.6	+\$30	+\$34	+\$43
ACC	42%	33%	46%	73%	68%	70%	65%	56%	40%	70%	41%	52%	56%	62%	62%	55%	46%			

Traits Observed: BWT, 200WT, 400WT, SS, FAT, EMA, IMF

Rock Solid progeny have the extra kg and carcass yield we need in the beef industry. Plenty of balanced performance EBV's in L283. He has a double cross of Sprys Zambesi 2nd, an all Aussie Sire.

Top 5% for 200 & Carcass wt. Top 10% for 400, 600 & Milk.

Purchaser: \$

LOT 58 OUTBACK SPRYS JOKER L290 (P)

DOB: 14/09/2015 **Colour:** Red **Ident No.:** OB L290

WAUKARU PATENT 8161 (IMP USA) (P) (ET) Red
 SPRYS PATENT'S ACE G38 (P) (ET) (AI) Roan
 NEEARRA JUDITH 104 (P) Roan
Sire: OUTBACK JOKER J328 (P) (ET) (AI) Roan
 JR LEGEND 78H (IMP USA) (P) Red
 LACHLAN FRANCIS 2024 (P) (TWIN) (ET) (AI) Red Little White
 HIGHDENUP FRANCES (P) (AI) Red Little White

GLENELL IMF B90 (P) Red
 SPRYS SOLUTION E006 (P) Red
 SPRYS AC. ULTIMATE M. NIAM A101 (P) (ET) (AI) Red Little White
Dam: OUTBACK DIXY H166 (P) Red
 LACHLAN MASTER CARD (P) (ET) Roan
 OUTBACK DIXY E100 (P) Red
 OUTBACK DIXY FX219 (P) (SFA) Red

MEASUREMENTS	
Scrotal Size	
Weight	

February 2017 Shorthorn GROUP BREEDPLAN

	Calving Ease DIR (%)	Calving Ease DTRS (%)	Gestation Length (days)	Birth Wt. (kg)	200 Day Wt. (kg)	400 Day Wt. (kg)	600 Day Wt. (kg)	Mat. Cow Wt. (kg)	Milk (kg)	Scrotal Size (cm)	Days to Calving (days)	Carcase Wt. (kg)	Eye Muscle Area (sq.cm)	Rib Fat (mm)	Rump Fat (mm)	Retail Beef Yield (%)	IMF (%)	Dom. Mat. Index (\$)	Export Mat. Index (\$)	Nth Mat. Index (\$)
EBV	+0.9	-1.5	-1.2	+1.7	+24	+34	+39	+28	+3	+0.6	-0.1	+29	+2.9	-0.6	-0.7	+0.9	+0.9	+\$28	+\$34	+\$31
ACC	40%	33%	40%	71%	66%	69%	63%	57%	39%	69%	41%	51%	55%	62%	62%	56%	46%			

Traits Observed: BWT, 200WT, 400WT, SS, FAT, EMA, IMF

Very impressed with the Joker sons who has plenty of carcass shape to keep his progeny at the top end of the carcass grid with an added bonus of high marbling in L290. OB L290 is suitable for heifers.

Top 5% for IMF. Top 15% for BW.

Purchaser: \$



LOT 59 SPRYS CHERRYS GOVERNOR L210 (P)

DOB: 18/08/2015 **Colour:** Roan **Ident No.:** GLSL210

GLENELL IMF B90 (P) Red
 SPRYS IMF'S LEGEND E020 (P) Red Little White
 SPRYS LEGENDS MARGLORY Y069 (P) (ET) (AI) Roan
Sire: GLENGYRON GOVERNOR (P) Red Little White
 SPRYS PIONEER A201 (P) (ET) (AI) Red Little White
 GLENGYRON ROSE 66 (P) Red Little White
 GLENGYRON ROSE 43RD (P) Red

DUNBEACON YAHOO (P) (AI) Red
 DUNBEACON E213 (P) Roan
 DUNBEACON Y3115 (P) (SFA) Roan
Dam: SPRYS CHERRY H151 (P) Red
 SPRYS ICONS WAGON C092 (P) (AI) Roan
 SPRYS WAGON'S CHERRY F206 (P) (AI) Red
 LONE PINE CHERRY C032 (P) Roan

MEASUREMENTS	
Scrotal Size	
Weight	

February 2017 Shorthorn GROUP BREEDPLAN

	Calving Ease DIR (%)	Gestation Length (days)	Birth Wt. (kg)	200 Day Wt. (kg)	400 Day Wt. (kg)	600 Day Wt. (kg)	Mat. Cow Wt. (kg)	Milk (kg)	Scrotal Size (cm)	Days to Calving (days)	Carcase Wt. (kg)	Eye Muscle Area (sq.cm)	Rib Fat (mm)	Rump Fat (mm)	Retail Beef Yield (%)	IMF (%)	Dom. Mat. Index (\$)	Export Mat. Index (\$)	Nth Mat. Index (\$)
EBV	-0.3	-0.7	+2.3	+19	+28	+16	+20	+4	+1.3	+0.8	+23	+5.1	-1.1	-2.3	+1.4	+1.0	+\$20	+\$27	+\$10
ACC	34%	41%	71%	67%	64%	71%	57%	31%	68%	36%	52%	52%	60%	60%	54%	42%			

Traits Observed: CE, BWT, 200WT, 600WT, SS, FAT, EMA, IMF

Should be okay on heifers and cows. A thick, medium maturity bull with plenty of shape and high IMF. Dam is medium maturity with plenty of milk.
Top 1% for IMF. Top 20% for EMA.

Purchaser: \$

LOT 60 OUTBACK SPRYS EXCLUSIVE L279 (P) (SFA)

DOB: 20/08/2015 **Colour:** Roan **Ident No.:** OB L279

ROYALLA EXTERMINATOR (P) Roan
 SOUTHCOTE YALE Y157 (P) (AI) Red Little White
 SOUTHCOTE RUPERTA W1 (P) Red Little White
Sire: SPRYS EXCLUSIVE E021 (P) Roan
 THE GROVE BENCHMARK Y931 (P) Red
 SPRYS AUGUSTAS BENCHMARK C069 (P) (ET) (AI) Roan
 SPRYS BRAGS AUGUSTA M150 (H) White

SPRYS MASTER BLASTER Z039 (P) Roan
 LACHLAN MASTER CARD (P) (ET) Roan
 THE GROVE DALE Z046 (P) (ET) (AI) Red
Dam: OUTBACK SAMMY E77 (P) (SFA) Red

MEASUREMENTS	
Scrotal Size	
Weight	

February 2017 Shorthorn GROUP BREEDPLAN

	Calving Ease DIR (%)	Calving Ease DTRS (%)	Gestation Length (days)	Birth Wt. (kg)	200 Day Wt. (kg)	400 Day Wt. (kg)	600 Day Wt. (kg)	Mat. Cow Wt. (kg)	Milk (kg)	Scrotal Size (cm)	Days to Calving (days)	Carcase Wt. (kg)	Eye Muscle Area (sq.cm)	Rib Fat (mm)	Rump Fat (mm)	Retail Beef Yield (%)	IMF (%)	Dom. Mat. Index (\$)	Export Mat. Index (\$)	Nth Mat. Index (\$)
EBV	+2.3	+3.7	-0.4	+2.5	+21	+29	+33	+34	+7	+1.2	-0.6	+25	+1.2	-1.4	-1.9	+1.1	+0.5	+\$24	+\$28	+\$26
ACC	45%	38%	52%	72%	67%	69%	65%	58%	47%	71%	43%	52%	56%	62%	62%	56%	46%			

Traits Observed: BWT, 200WT, 400WT, SS, FAT, EMA, IMF

An eye catching roan who has a balance of genetics who will excel in a self replacing herd. Plenty of outstanding females in his pedigree.
Top 20% for Calving ease daughters.

Purchaser: \$

LOT 61 SPRYS LILYS SOLUTION L98 (P) (AI)

DOB: 05/08/2015 **Colour:** Red **Ident No.:** GLSL98

GLENELL IMF B90 (P) Red
 SPRYS SOLUTION E006 (P) Red
 SPRYS AC. ULTIMATE M. NIAM A101 (P) (ET) (AI) Red Little White
Sire: OUTBACK SPRYS SOLUTION H283 (P) Red
 SPRYS FAIR DINKUM Z027 (P) (ET) (AI) Roan
 OUTBACK DIVA D07 (P) Red
 ERAMBIE POI SONG 48 (P) Roan

SPRYS RED ROCKET B069 (P) (ET) (AI) Red
 ELOORA WINCHESTER E17 (P) (AI) Red Little White
 ELOORA LAVENDAR Z50 (P) (AI) Red
Dam: SPRYS WINCHESTER'S LILY H176 (P) Red Little White
 MARELLAN EMERALD (P) (AI) Red and White
 SPRYS EMERALDS LILY D097 (P) (AI) Red Little White
 SPRYS L10 LILY A055 (P) (ET) (AI) Roan

MEASUREMENTS	
Scrotal Size	
Weight	

February 2017 Shorthorn GROUP BREEDPLAN

	Calving Ease DIR (%)	Calving Ease DTRS (%)	Gestation Length (days)	Birth Wt. (kg)	200 Day Wt. (kg)	400 Day Wt. (kg)	600 Day Wt. (kg)	Mat. Cow Wt. (kg)	Milk (kg)	Scrotal Size (cm)	Days to Calving (days)	Carcase Wt. (kg)	Eye Muscle Area (sq.cm)	Rib Fat (mm)	Rump Fat (mm)	Retail Beef Yield (%)	IMF (%)	Dom. Mat. Index (\$)	Export Mat. Index (\$)	Nth Mat. Index (\$)
EBV	-0.5	+0.4	-0.7	+3.8	+29	+41	+47	+44	+6	+1.8	-1.3	+32	+4.5	-0.9	-1.6	+1.4	+0.7	+\$29	+\$33	+\$32
ACC	35%	29%	65%	60%	65%	63%	70%	56%	37%	68%	40%	53%	52%	60%	60%	54%	44%			

Traits Observed: GL, CE, 200WT, 600WT, SS, FAT, EMA, IMF

Really like L98 for his overall balance of traits which make excellent mums and ideal feeder steers. The carcass feedback data from his sire H283 is very promising and consistent.
Top 10% for IMF. Top 20% for Scrotal.

Purchaser: \$



LOT 62 SPRYS EXCLUSIVE L59 (P) (AI)

DOB: 16/07/2015 **Colour:** Roan **Ident No.:** GLSL59

SOUTHCOTE YALE Y157 (P) (AI) Red Little White
 SPRYS EXCLUSIVE E021 (P) Roan
 SPRYS AUGUSTAS BENCHMARK C069 (P) (ET) (AI) Roan

THE GROVE OSCAR A748 (P) (ET) (AI) Red
 THE GROVE TIDE-RIP E667 (P) Red Little White
 THE GROVE RAMONA Z445 (P) Roan
 THE GROVE KASPROWICZ W791 (P) Red
 THE GROVE PRIMROSE A742 (P) (ET) (AI) Red
 THE GROVE PRIMROSE R202 (P) Red

Sire: SPRYS EXCLUSIVE J13 (P) (AI) Roan

Dam: SPRYS MISS PRIM TIDE (P) (ET) (AI) Red

JR LEGEND 78H (IMP USA) (P) Red
 SPRYS LEGENDS MAREE G2 (P) (AI) Red
 SPRYS MAREE D119 (P) (AI) (SFA) Red

MEASUREMENTS	
Scrotal Size	
Weight	

February 2017 Shorthorn GROUP BREEDPLAN

	Calving Ease DIR (%)	Calving Ease DTRS (%)	Gestation Length (days)	Birth Wt. (kg)	200 Day Wt. (kg)	400 Day Wt. (kg)	600 Day Wt. (kg)	Mat. Cow Wt. (kg)	Milk (kg)	Scrotal Size (cm)	Days to Calving (days)	Carcass Wt. (kg)	Eye Muscle Area (sq.cm)	Rib Fat (mm)	Rump Fat (mm)	Retail Beef Yield (%)	IMF (%)	Dom. Mat. Index (\$)	Export Mat. Index (\$)	Nth Mat. Index (\$)
EBV	+4.1	+4.3	-4.0	+2.6	+22	+34	+41	+43	+6	+1.1	-1.9	+30	+3.6	-1.4	-1.6	+1.2	+0.4	+\$33	+\$34	+\$38
ACC	38%	32%	66%	70%	66%	63%	70%	55%	34%	68%	40%	51%	51%	58%	58%	52%	42%			

Traits Observed: GL, CE, BWT, 200WT, 600WT, SS, FAT, EMA, IMF

A moderate, thick, deep bodied bull. Out of a first calver born unassisted. Out of a daughter of the Super Donor, Primrose A742. Exclusive J13 has proved a great calving ease heifer bull.

Top 15% for Calving ease daughters. Top 20% for Calving ease direct.

Purchaser: \$

LOT 63 OUTBACK SPRYS EXCLUSIVE L276 (P)

DOB: 14/08/2015 **Colour:** Red Little White **Ident No.:** OB L276

ROYALLA EXTERMINATOR (P) Roan
 SOUTHCOTE YALE Y157 (P) (AI) Red Little White
 SOUTHCOTE RUPERTA W1 (P) Red Little White

SPRYS AUSSIE GOLD B086 (P) Red Little White
 SPRYS ALL GOLD D052 (P) Roan
 NEEARRA JUDITH 104 (P) Roan

Sire: SPRYS EXCLUSIVE E021 (P) Roan

Dam: OUTBACK ISABELLA F67 (P) (AI) Red Little White

THE GROVE BENCHMARK Y931 (P) Red
 SPRYS AUGUSTAS BENCHMARK C069 (P) (ET) (AI) Roan
 SPRYS BRAGS AUGUSTA M150 (H) White

THE GROVE CONDAMINE (P) (ET) (AI) Red
 SCHULLER ISABELLA FW204 (P) (SFA) Red

MEASUREMENTS	
Scrotal Size	
Weight	

February 2017 Shorthorn GROUP BREEDPLAN

	Calving Ease DIR (%)	Calving Ease DTRS (%)	Gestation Length (days)	Birth Wt. (kg)	200 Day Wt. (kg)	400 Day Wt. (kg)	600 Day Wt. (kg)	Mat. Cow Wt. (kg)	Milk (kg)	Scrotal Size (cm)	Days to Calving (days)	Carcass Wt. (kg)	Eye Muscle Area (sq.cm)	Rib Fat (mm)	Rump Fat (mm)	Retail Beef Yield (%)	IMF (%)	Dom. Mat. Index (\$)	Export Mat. Index (\$)	Nth Mat. Index (\$)
EBV	-0.1	-0.5	+0.1	+3.3	+29	+40	+49	+52	+9	+1.4	-0.3	+35	+2.9	-1.9	-3.2	+1.8	+0.3	+\$23	+\$24	+\$27
ACC	47%	41%	54%	73%	69%	71%	67%	62%	48%	71%	45%	55%	58%	64%	64%	58%	49%			

Traits Observed: BWT, 200WT, 400WT, SS, FAT, EMA, IMF

A very good dark red bull who is very slick coated in a fine palatable skin. The Aussie Gold females are making very productive cows with great udder & teats.

Top 5% for Milk. Top 10% for RBV.

Purchaser: \$

LOT 64 OUTBACK SPRYS CANYON L286 (P)

DOB: 26/08/2015 **Colour:** Roan **Ident No.:** OB L286

BYLAND LEGACY SRD15 ET (H) Red
 JR LEGEND 78H (IMP USA) (P) Red
 JR FANCY LADY 96E (P) Red Little White

SPRINGWOOD STATION CHICAGO HOPE (P) Roan
 TURANVILLE CHICAGO Z82 (P) Red
 TURANVILLE RIDDLE W18 (P) Roan

Sire: SPRYS TLC CANYON C056 (P) (AI) Red

Dam: FUTURITY CHICAGOS LILY E44 (P) Roan

THE GROVE KASPROWICZ W791 (P) Red
 THE GROVE PRIMROSE A742 (P) (ET) (AI) Red
 THE GROVE PRIMROSE R202 (P) Red

FUTURITY WAGON W32 (P) Roan
 FUTURITY WAGAON'S LILY C32 (P) White
 FUTURITY LILY (P) (AI) Roan

MEASUREMENTS	
Scrotal Size	
Weight	

February 2017 Shorthorn GROUP BREEDPLAN

	Calving Ease DIR (%)	Calving Ease DTRS (%)	Gestation Length (days)	Birth Wt. (kg)	200 Day Wt. (kg)	400 Day Wt. (kg)	600 Day Wt. (kg)	Mat. Cow Wt. (kg)	Milk (kg)	Scrotal Size (cm)	Days to Calving (days)	Carcass Wt. (kg)	Eye Muscle Area (sq.cm)	Rib Fat (mm)	Rump Fat (mm)	Retail Beef Yield (%)	IMF (%)	Dom. Mat. Index (\$)	Export Mat. Index (\$)	Nth Mat. Index (\$)
EBV	+3.8	+1.8	-2.4	+4.1	+33	+46	+63	+46	+6	+2.2	-2.7	+35	+2.5	-0.7	-0.8	+0.3	+0.6	+\$37	+\$39	+\$50
ACC	45%	38%	44%	73%	67%	70%	64%	57%	44%	70%	44%	52%	56%	62%	62%	56%	47%			

Traits Observed: BWT, 200WT, 400WT, SS, FAT, EMA, IMF

By a great Sire in Canyon. An excellent combination of balanced EBV's. Really impressed with the slick skin and fine hair coat. The Canyon females are top cows and are working very well on Dromore Station, Wilcannia.

Top 10% for 200 & Scrotal. Top 15% for 400 & 600 wt.

Purchaser: \$



LOT 65 SPRYS FRANCES LAD L226 (P)

DOB: 03/09/2015 **Colour:** Roan **Ident No.:** GLSL226

GLENELL IMF B90 (P) Red
 OUTBACK SPRYS BALANCE G266 (P) (ET) (AI) Red
 SCHULLER RED KATE C1 (P) (TWIN) (AI) Red
Sire: SPRYS BALANCE J73 (P) Red Little White
 RED ROSE GOLD SPEAR RUFFIAN (IMP CAN) (P) Roan
 SPRYS GOLD SPEAR DAWN G4 (P) (AI) Roan
 SPRYS ROCKETS DAWN D139 (P) (ET) (AI) Red

THE GROVE OSCAR A748 (P) (ET) (AI) Red
 THE GROVE TIDE-RIP E667 (P) Red Little White
 THE GROVE RAMONA Z445 (P) Roan
Dam: SPRYS TIDE RIPS FRANCES H246 (P) (ET) (AI) Red
 JR LEGEND 78H (IMP USA) (P) Red
 EDEN PARK LEGENDS FRANCES W006 (P) (ET) (AI) Red
 HIGHDENUP FRANCES (P) (AI) Red Little White

MEASUREMENTS	
Scrotal Size	
Weight	

February 2017 Shorthorn GROUP BREEDPLAN

	Calving Ease DIR (%)	Calving Ease DTRS (%)	Gestation Length (days)	Birth Wt. (kg)	200 Day Wt. (kg)	400 Day Wt. (kg)	600 Day Wt. (kg)	Mat. Cow Wt. (kg)	Milk (kg)	Scrotal Size (cm)	Days to Calving (days)	Carcass Wt. (kg)	Eye Muscle Area (sq.cm)	Rib Fat (mm)	Rump Fat (mm)	Retail Beef Yield (%)	IMF (%)	Dom. Mat. Index (\$)	Export Mat. Index (\$)	Nth Mat. Index (\$)
EBV	-2.1	+2.2	0.0	+4.1	+32	+47	+61	+54	+6	+2.2	-1.9	+38	+3.9	-0.8	-0.6	+1.0	+0.7	+\$33	+\$35	+\$41
ACC	35%	29%	40%	58%	62%	60%	63%	52%	34%	61%	36%	49%	48%	55%	55%	49%	40%			

Traits Observed: 200WT, 600WT, SS, FAT, EMA, IMF

From a productive, sound Frances female who continues to impress us in production traits. L226 is a long, free moving bull who is a little later in his maturity than some of the sale bulls.

Top 10% for Scrotal & IMF. Top 15% for 200 & 400. Top 20% for 600 wt.

Purchaser: \$

AUTUMN 2015 DROP SHORTHORN BULLS - LOTS 66-69

LOT 66 OUTBACK SPRYS SOLID L261 (P)

DOB: 11/03/2015 **Colour:** Red **Ident No.:** OB L261

WAUKARU GOLD CARD 5042 (IMP USA) (P) Red
 WAUKARU PATENT 8161 (IMP USA) (P) (ET) Red
 WAUKARU 12H MELITA ROSE 5021 (H) Red
Sire: SPRYS ROCK SOLID H5 (P) (ET) (AI) Red
 EDEN PARK STOCKMAN (P) (AI) Red
 SCHULLER ANN B47 (P) Red
 CHADWICK R127 (H) (SFA) Roan

SPRYS AUSSIE GOLD B086 (P) Red Little White
 SPRYS ALL GOLD D052 (P) Roan
 NEEARRA JUDITH 104 (P) Roan
Dam: OUTBACK WATERMAID H8 (P) (TWIN) (AI) Red Little White
 HS ROLEX 772 (IMP USA) (P) (ET) Red
 BROOME IMPECCABLE WATERMAID (P) (AI) Red Little White
 BROOME ZESTFUL WATERMAID (P) Roan

MEASUREMENTS	
Scrotal Size	
Weight	

February 2017 Shorthorn GROUP BREEDPLAN

	Calving Ease DIR (%)	Calving Ease DTRS (%)	Gestation Length (days)	Birth Wt. (kg)	200 Day Wt. (kg)	400 Day Wt. (kg)	600 Day Wt. (kg)	Mat. Cow Wt. (kg)	Milk (kg)	Scrotal Size (cm)	Days to Calving (days)	Carcass Wt. (kg)	Eye Muscle Area (sq.cm)	Rib Fat (mm)	Rump Fat (mm)	Retail Beef Yield (%)	IMF (%)	Dom. Mat. Index (\$)	Export Mat. Index (\$)	Nth Mat. Index (\$)
EBV	-6.1	-8.5	-0.2	+4.6	+42	+57	+78	+57	+12	+1.6	+1.1	+47	+6.4	-2.1	-4.5	+2.8	+0.3	+\$20	+\$24	+\$29
ACC	43%	35%	46%	72%	68%	70%	65%	56%	40%	70%	42%	52%	56%	62%	62%	56%	47%			

Traits Observed: CE, BWT, 200WT, 400WT, SS, FAT, EMA, IMF

A really stout, long bodied bull who will add more shape of carcass to your herd and produce great steers and super females. Could be used in self replacing herd or as a terminal cross.

Top 1% 200, Milk & RBV. Top 5% for 400 & 600 wt. Top 10% for EMA.

Purchaser: \$

LOT 67 OUTBACK SPRYS BARREL L257 (P) (AI)

DOB: 25/02/2015 **Colour:** White **Ident No.:** OB L257

WAUKARU GOLD CARD 5042 (IMP USA) (P) Red
 WAUKARU PATENT 8161 (IMP USA) (P) (ET) Red
 WAUKARU 12H MELITA ROSE 5021 (H) Red
Sire: SPRYS DOUBLE BARREL H155 (P) (ET) (AI) Roan
 JR LEGEND 78H (IMP USA) (P) Red
 SPRYS LEGENDS MARGLORY Y069 (P) (ET) (AI) Roan
 GENEFEE MARGLORY 4TH (P) Red Little White

SPRYS GRANDSLAM Q23 (P) (ET) Red
 NARRALDA WARRIOR V11 (P) (AI) Roan
 NARRALDA ROBIN Q1 (P) (TWIN) (AI) Roan
Dam: SCHULLER WARRIORS JOYCE C13 (P) (AI) Roan
 SPRYS TRUE BLUE Y033 (P) (ET) (AI) Red
 SCHULLER TRUE HOPE (P) (AI) Roan
 SPRYS C HOPE JOYCE X112 (P) Roan

MEASUREMENTS	
Scrotal Size	
Weight	

February 2017 Shorthorn GROUP BREEDPLAN

	Calving Ease DIR (%)	Calving Ease DTRS (%)	Gestation Length (days)	Birth Wt. (kg)	200 Day Wt. (kg)	400 Day Wt. (kg)	600 Day Wt. (kg)	Mat. Cow Wt. (kg)	Milk (kg)	Scrotal Size (cm)	Days to Calving (days)	Carcass Wt. (kg)	Eye Muscle Area (sq.cm)	Rib Fat (mm)	Rump Fat (mm)	Retail Beef Yield (%)	IMF (%)	Dom. Mat. Index (\$)	Export Mat. Index (\$)	Nth Mat. Index (\$)
EBV	-0.5	-0.3	-2.8	+3.2	+33	+38	+54	+43	+6	+1.3	-1.0	+34	+2.3	-1.7	-2.9	+1.0	+0.3	+\$21	+\$23	+\$30
ACC	44%	36%	51%	73%	68%	70%	66%	56%	42%	71%	43%	52%	55%	62%	62%	56%	46%			

Traits Observed: CE, BWT, 200WT, 400WT, SS, FAT, EMA, IMF

A very impressive white bull who has a great blend of predictable, sound genetics. Ideal for Angus and Hereford herds.

Top 10% for 200 wt.

Purchaser: \$



LOT 68 SPRYS LONGREACH L10 (P) (ET) (AI)

DOB: 06/04/2015 Colour: Roan Ident No.: GLSL10

WAUKARU GOLD CARD 5042 (IMP USA) (P) Red
 WAUKARU PATENT 8161 (IMP USA) (P) (ET) Red
 WAUKARU 12H MELITA ROSE 5021 (H) Red

JR LEGEND 78H (IMP USA) (P) Red
 FUTURITY WALLABY W23 (P) (ET) (AI) Red
 FUTURITY ALTHEA'S RUBY (P) Red

Sire: SPRYS PATENT'S ACE G38 (P) (ET) (AI) Roan

Dam: BROUGHTON PARK GOLDEN DROP B085 (P) Red

SPRYS ONLY A LEGEND W026 (P) (ET) (AI) Roan
 NEEARRA JUDITH 104 (P) Roan
 NEEARRA JUDITH 67 (P) (AI) Red

BROUGHTON PARK CHEROKEE W001 (P) Roan
 BROUGHTON PARK GOLDEN DROP Y093 (P) Roan
 BROUGHTON PARK GOLDEN DROP U125 (P) Red

MEASUREMENTS	
Scrotal Size	
Weight	

February 2017 Shorthorn GROUP BREEDPLAN

	Calving Ease DIR (%)	Calving Ease DTRS (%)	Gestation Length (days)	Birth Wt. (kg)	200 Day Wt. (kg)	400 Day Wt. (kg)	600 Day Wt. (kg)	Mat. Cow Wt. (kg)	Milk (kg)	Scrotal Size (cm)	Days to Calving (days)	Carcass Wt. (kg)	Eye Muscle Area (sq.cm)	Rib Fat (mm)	Rump Fat (mm)	Retail Beef Yield (%)	IMF (%)	Dom. Mat. Index (\$)	Export Mat. Index (\$)	Nth Mat. Index (\$)
EBV	-5.5	-6.2	-2.3	+2.1	+29	+33	+47	+27	+6	+2.0	-2.1	+35	+5.1	-0.4	-1.1	+1.4	+0.7	+\$19	+\$25	+\$24
ACC	48%	43%	54%	71%	68%	70%	67%	59%	48%	70%	46%	56%	58%	64%	63%	58%	50%			

Traits Observed: BWT, 200WT, 400WT, SS, FAT, EMA, IMF

A soft roan, moderate birth with well balanced EBV's and with length of body and from a very impressive, easy doing Donor cow. Full brother sold in last year's sale for \$10,000.

Top 15% for Scrotal. Top 20% for BW. Top 25% for EMA.

Purchaser: \$

LOT 69 SPRYS EVEREST L12 (P) (SFA)

DOB: 13/04/2015 Colour: Red Ident No.: GLSL12

THE GROVE OSCAR A748 (P) (ET) (AI) Red
 YAMBURGAN EVEREST E102 (P) Roan
 YAMBURGAN MARGARET 31ST (P) Roan

GLENELL IMF B90 (P) Red
 SPRYS RIPPER E026 (P) Red
 SPRYS LIZZY 2078 (P) (TWIN) Red

Sire: YAMBURGAN EVEREST G643 (P) Red

Dam: SPRYS MISS IMF G15 (P) (SFA) Red

THE GROVE LEGEND A584 (P) (ET) (AI) Red
 YAMBURGAN D231 (P) (AI) (SFA) Red Little White
 YAMBURGAN JEWEL B300 (P) (SFA) Red

MEASUREMENTS	
Scrotal Size	
Weight	

February 2017 Shorthorn GROUP BREEDPLAN

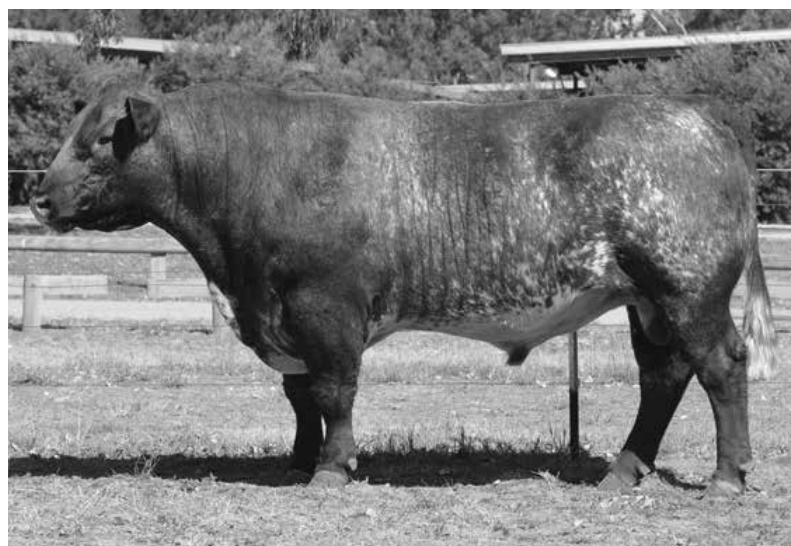
	Calving Ease DIR (%)	Calving Ease DTRS (%)	Gestation Length (days)	Birth Wt. (kg)	200 Day Wt. (kg)	400 Day Wt. (kg)	600 Day Wt. (kg)	Mat. Cow Wt. (kg)	Milk (kg)	Scrotal Size (cm)	Days to Calving (days)	Carcass Wt. (kg)	Eye Muscle Area (sq.cm)	Rib Fat (mm)	Rump Fat (mm)	Retail Beef Yield (%)	IMF (%)	Dom. Mat. Index (\$)	Export Mat. Index (\$)	Nth Mat. Index (\$)
EBV	+4.2	+4.7	-2.1	+1.2	+25	+30	+47	+36	+7	+2.5	-5.1	+33	+1.9	-0.1	+0.9	+0.4	+0.5	+\$39	+\$40	+\$51
ACC	32%	25%	32%	66%	60%	63%	56%	48%	28%	66%	35%	42%	47%	54%	55%	48%	37%			

Traits Observed: BWT, 200WT, 400WT, SS, FAT, EMA, IMF

Should be okay as a heifer bull with good balanced EBV's.

Top 5% for Scrotal. Top 10% for calving ease daughters & BW & Nthn Maternal. Top 15% for Rump fat. Top 20% for calving ease direct, Milk, Domestic, Export Maternal.

Purchaser: \$



SPRYS PRIMROSES BUDDY J17 (P)

Tested Homo Polled.

Trait leader for Gestation Length and Birth Weight.

Semen Marketing owned by Sprys & Glengyron Studs.

*** Semen Available for Sale. ***

February 2017 Shorthorn GROUP BREEDPLAN																				
	Calving Ease DIR (%)	Calving Ease DTRS (%)	Gestation Length (days)	Birth Wt. (kg)	200 Day Wt. (kg)	400 Day Wt. (kg)	600 Day Wt. (kg)	Mat. Cow Wt. (kg)	Milk (kg)	Scrotal Size (cm)	Days to Calving (days)	Carcass Wt. (kg)	Eye Muscle Area (sq.cm)	Rib Fat (mm)	Rump Fat (mm)	Retail Beef Yield (%)	IMF (%)	Dom. Mat. Index (\$)	Export Mat. Index (\$)	Nth Mat. Index (\$)
EBV	+5.4	+0.3	-3.2	+1.3	+25	+36	+48	+32	+6	+0.9	-0.3	+40	+4.5	+0.6	+1.1	+0.9	+0.6			
Acc	60%	48%	78%	84%	77%	76%	75%	66%	47%	73%	48%	59%	60%	65%	65%	59%	51%			
Breed Avg. EBVs for 2015 Born Calves Click for Penalties																				
EBV	+0.5	+0.6	-1.5	+3.1	+26	+36	+49	+43	+6	+1.4	-1.1	+33	+4.1	-0.5	-0.5	+1.0	+0.5			

Traits Observed: BWT, 200WT, 400WT, 600WT, SS, FAT, EMA, IMF
 Birth Weight Progeny: 62
 Statistics: Number of Herds: 8, Progeny Analysed: 82, Scan Progeny: 22.

COMPANION REPRODUCTION PRODUCTION



Arrival

Upon arrival ensure your new bulls socialize with a group of animals, (anything except other bulls in the yards, when they arrive).

Run the new bull with a small group of empty females, (he has come from a different herd and may not have had exposure to some of the normal pathogens present in your herd). This must be done, only two new bull at a time, with the empty females, for a period of 2 to 4 weeks. Ideally give the cows prostaglandin every 2 weeks so they can continue to cycle.

Pre Joining

We recommend a breeding soundness examination (BSE), including structural assessment, testicular palpation and (ideally) a service ability test. This is mandatory for second joining and older bull each year. It will improve the fertility performance of the herd, by removing non-working bull out with the cows. If bull(s) are not service tested it is essential you observe the bull serve in the first week of joining.

Keep vaccinations up to date, vibrovax, pestivirus and leptospirosis 7 in 1 and an annual drench, 4-6 weeks prior to joining.

Joining

New bull(s) have the highest risk of breakdown in the herd, this risk can be reduced by:

- Protect a new bull by not overjoining, 40 females per bull maximum.
- It is recommended, if single sire joining with a new bull, to rotate him with a proven bull for at least once cycle. Also, it is good practice to rotate proven bull(s) for the last cycle with all new bull(s).
- Recommend that all females are joined in groups with 2 bulls.

'Most new bull fertility issues develop during the joining period, rather than being pre-existing problems, this means that bull surveillance during the joining period is essential.'

Once the joining is set up, monitoring is essential to identify issues as they develop.

Your new bulls need to be run in mobs that are easily monitored, check them 2 to 3 times a week for the first three weeks and then weekly thereafter. This includes looking for:

- The bull serving, (this has not been successful until the bull thrusts). If a bull is continually mounting without serving it is often a sign the bull has developed a penile infection and needs to be rested and replaced immediately.
- Lameness
- Evidence of penile or prepuce swelling or inflammation
- Signs of ill health, lethargy, etc
- Numbers of females cycling, (for every 21 females, once cycles each day at the commencement of joining). After three weeks of joining, there should be one cow cycling every three days per 21 females if the bulls are working satisfactory.

Post Joining

Bulls need to be removed from the cows, at the same time, to create their new mobs. This will limit the amount of potential injuries by reducing the number of bull interactions.

Bull paddock management is very important to minimize injury between joining's. The bulls need enough room to reduce fighting, restricted feed and water will increase interaction.

The target between joining's is to restrict weight gain in older bulls to prevent breakdowns. Ideally young bulls have access to a higher level of nutrition as they continue to grow.

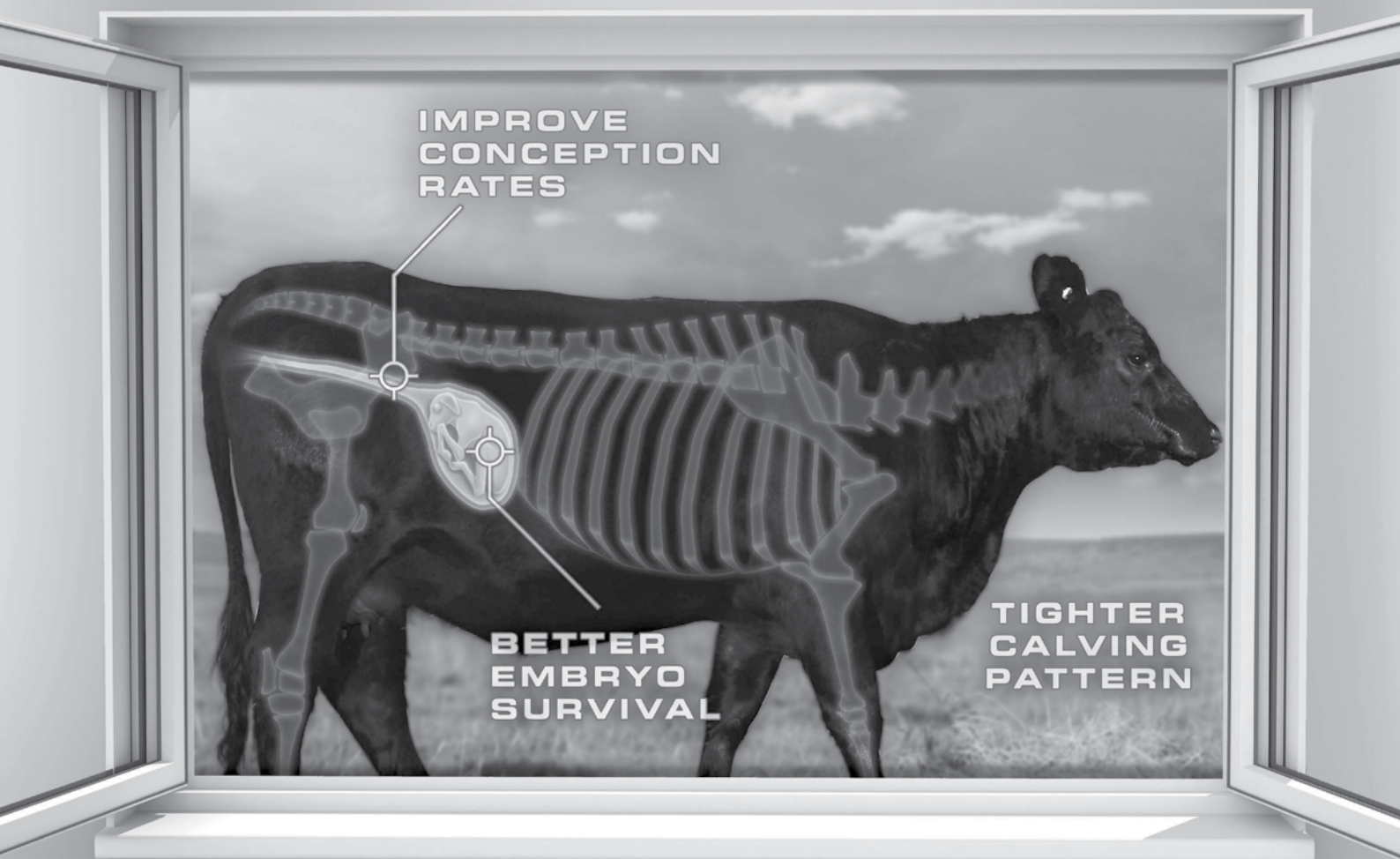
Early pregnancy testing is essential for good female management and detection of surprises. The earlier the pregnancy testing is undertaken, the more likely the cause of the problem will be identified. This will not only give you early notice of the problem but also help in formulating a plan to help reduce the chance of the problem occurring in the future.



MULTIMIN[®]

Injection for Cattle

OPEN THE WINDOW OF PRODUCTIVITY BEFORE JOINING.



Deliver essential trace minerals quickly when they have the most impact.

MULTIMIN[®] is a multi-mineral injection designed to be used at critical times in the production cycle. One such window of productivity is the 30 days before joining. Given during this time, the minerals in Multimín can assist conception and embryo survival, leading to a tighter calving pattern.

- Contains selenium, copper, zinc and manganese, trace minerals that are essential for conception and maintenance of pregnancy.
- Improve fertility and improve your return.

Contact your local area sales manager today.



MULTIMIN is a registered trademark of Virbac (Australia) Pty Ltd.



Passionate about animal health

Customer Support: 1800 009 847

virbac.com.au/multimin



BUYER'S INSTRUCTION SLIP

To be handed in to the Settling Office immediately after the sale (by all purchasers).

PURCHASER DETAILS

Purchaser Name:

Trading Name:

Address:

Phone Numbers: B/H A/H Mobile

Email Address:

Manager / Stockman Phone No.:

Property Identification Code (PIC, must be provided on sale day)

DELIVERY DETAILS

Lots Purchased:

Insure for: (period) Amount:

ACCOUNT DETAILS

Signature:

If you elect to settle through an Agent who has nominated you, the Agent must sign below. **This applies to ALL AGENTS.**

Agent.....Signature.....

Date: 21st April, 2017

STUD REGISTRATIONS

Do you wish to have the Shorthorn Beef Registration transferred into your name? Please tick the box and if yes give your membership number.

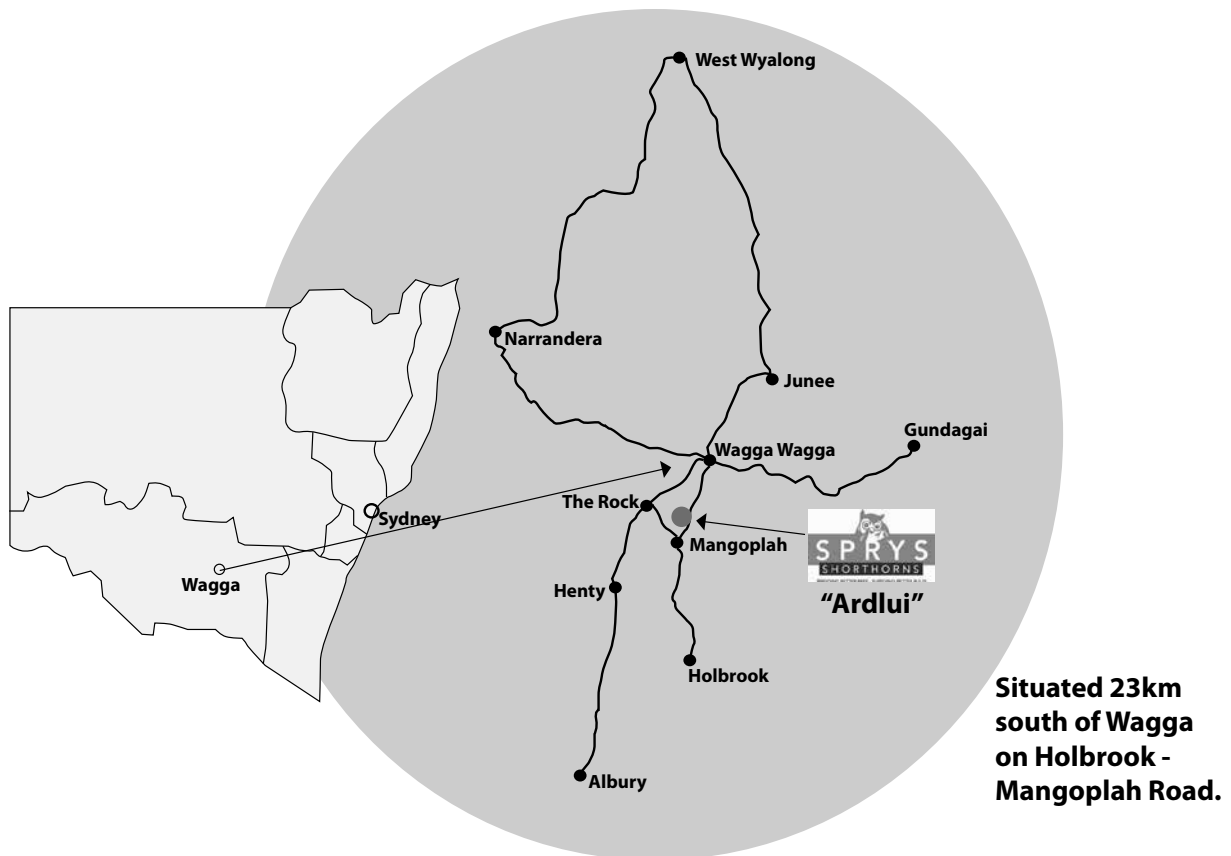
Yes No

(Member Number)

EXTRA DELIVERY DETAILS INCLUDING DIRECTIONS IF REQUIRED

.....
.....
.....

HOW TO GET TO SPRY'S



Sprys Genetics Shine in Borthwick Win

The Shorthorn breed has claimed the Borthwick trophy at Melbourne Royal 2016 for 3 steers judged on hoof & hook (with 1/3 of points awarded to hoof and 2/3 awarded to hook).

The winning combination were bred by the Brook family, McKay Bros & Finley High School.

The Finley High School Steer was sired by Sprys Exclusive J13 out of Sprys Patents Ace G38 heifer.

The Eloora steer was sired by a son of Sprys Patents Ace G38.

The Marschay steer was sired by a son of Marschay Holmes.

When the carcass points were tallied the Shorthorn team were almost 10 points clear of the next breed.

This effort continues to confirm Sprys genetics are performing at the very top end of Australian carcass specifications.

Well done to the Brook Family, McKay family & Finley High School.



NOTES



