



# SPRYS

## SHORTHORNS

# 53 Years of Breeding Bull & Genetics Sale

**Friday 21st April, 2017**

on property "Ardlui" Wagga Wagga  
Commencing at 1pm



**Sprys-W Supreme M505**



**Sprys Primroses Balance L41 (P)**



### SPRYS

SHORTHORNS

BREEDING BETTER BEEF -  
SUPPLYING BETTER BULLS

[www.spryshorthorns.com](http://www.spryshorthorns.com)

[www.spryangus.com.au](http://www.spryangus.com.au)



### SPRYS

ANGUS

BREEDING BETTER BEEF -  
SUPPLYING BETTER BULLS





BREEDING BETTER BEEF - SUPPLYING BETTER BULLS

**Lot 1-7 - Shorthorn Females & Genetics (Embryo's & pregnancies)**

**Lot 8 - Yearling Bull**

**Lots 9-26 - Spring 2015 drop Shorthorn Bulls**

**Lots 27-43 - Angus & Angus Composite Bulls**

**Lots 44-65 - Spring 2015 drop Shorthorn Bulls**

**Lots 66-69 - Autumn 2015 drop Shorthorn Bulls**

**FRIDAY 21st April, 2017 on property, "Ardlui", Wagga Wagga  
Commencing at 1pm**

View the video of sale bulls prior to our sale on our website: [www.spryshorthorns.com](http://www.spryshorthorns.com)

*Before the sale join us for a complimentary Thousand Guineas Shorthorn Beef BBQ*

***If you require Independent advice or assistance with your Bull or Genetic requirements from a Beef Cattle Consultant contact: Bob Gahan (02) 6766 9899 Mobile 0428 668233.***

***Bob will be in attendance on Sale day.***

## Vendor Contacts:

Gerald & Lynden Spry  
Ph: 02 6928 5526  
Mobile: 0428 651 481

Guest Auctioneer  
Paul Dooley  
0458 662 646



**AuctionsPlus**

*Buy and Sell stock nationally*

### SELLING AGENTS



**Yass**  
Michael Coggan: 0409 848411  
**Vic**  
Ross Milne: 0408 057558  
Andy McGeoch: 0418 737470  
**Albury**  
Jim Bruce: 0419 600355



**Albury**  
Tom Wilding-Davies: 0429 570504  
Peter Godbolt: 0457 591929  
**Wagga**  
Tim Woodham: 0436 015115  
Mark Barton: 0419 488256  
**Cootamundra** - Andrew Wishart: 0407 424706  
**Vic** - Ray Attwell: 0428 836136  
**Dubbo** - John Setttee: 0408 297368  
**Tamworth** - Joel Fleming: 0467 725195  
**S.A.**  
Gordon Wood: 0408 813215  
Richard Miller: 0428 849327  
**Qld** - Colby Ede: 0417 265980



Tony Fountain – 0418 238341



Trading as GJ & LL Spry ABN 63 815 350 153

'Ardlui' RMB 5389  
Holbrook Road  
WAGGA WAGGA NSW 2650 AUSTRALIA  
Tel. 02 6928 5526 Fax. 02 6928 5563  
Email. glspry@spryshorthorns.com  
www.spryshorthorns.com.au



## Dear Beef Producers

Welcome to our 53 years of breeding on property Sale.

We are extremely happy to offer you bulls & females which are ideal to fit at the top end of the Beef industry in terms of performance and productivity in the paddock.

At Sprys we have a balanced approach to our breeding programme. The sale will be interfaced on AuctionsPlus. Both Angus & Shorthorns are very even in terms of performance and maturity thus giving our Clients the opportunity to purchase a number of bulls who will breed a consistent line of progeny.

All bulls are bred to suit a vast range of environments and markets, giving the Sprys product lots of flexibility. Bulls are reared with the view to have a long, productive working life, they are never heavily fed and a strict criteria given to structural soundness.

2016 saw producers reaping excellent prices for their cattle with a big number of Sprys Genetic Clients receiving premiums for their cattle. We are continuing to Sire line test our bulls in the commercial industry with promising results of outstanding consistency in terms of carcase performance and growth rates.

We have a number of Clients selling not only into the JBS Thousand Guineas but grass fed branded beef from a number of major companies in Australia, also selling stores on AuctionsPlus.

The Shorthorn female has become one of strong demand in the commercial industry with Sprys Clients receiving excellent premiums. Again this year we are giving new and older producers the opportunity to purchase genetics new to Australia and also tried and tested, in particular a female pregnancy from Shadybrook Perfect Millie 19A (No. 1 cow in Shadybrook herd) X JSF Gauge 137W. (Complete outcross of tested genetics). We also have frozen embryos from the Super Donor female The Grove Primrose A742. These are great opportunities to get genetics not normally offered. Remember the genetics you buy from this sale are an investment in your breeding herd for many years to come. (You are buying from a tried and tested programme).

The Spry family thank you for your interest in our breeding programme and look forward to working with you in the future.

Best wishes for a healthy, happy and safe 2017,

Gerald & Lynden Spry



# MARKET & CARCASS HIGHLIGHTS 2016



## **Excellence with MSA Index Carcass results for Sprys Sired Steers**

From Adrian Goode - sold September to Teys, Naracoorte September 2016 (EU). Steers under 360kg dressed sold into MSA free range.

61 steers Top price \$2364 & averaged \$2176. The highest priced steer was sired by Sprys Patent G60.

Average Hot Dressed wt 351.46kg, Milk tooth (March/April 2015 drop).

Average Ossification 140.

MSA Marbling Average 430 Aus Meat Marble Score 2+.

Highest MSA index 64.57 averaged 62.81.

Highest Sire average 63.29.

Lowest Sire average 62.31. This demonstrates the consistency of the breeding herd and the sires being used. Congratulations to Adrian Goode for achieving a great result. It certainly shows the genetics and management are both at the top end of the beef industry in carcass excellence.



## **Jon Wright Blue-E Coota Park Outstanding Gain**

Top Gaining steer in 2017 Beef Spectacular from 360 steers average 3.34kg for 100 days. (Sired by Sprys Translator H408 (SH X Angus) bull purchased from Sprys sale 2014. This was a trial record. This steer was part of a team of steers that came 2nd from 72 teams for growth rate in the Feedlot and 10 from 72 teams in overall combined feedlot and Carcass.



*Teys Feedlot Spectacular*



## **Dan Fitzell**

a) Heifers into JBS Thousand Guineas Branded beef - averaged Marble Score 3 (well above the Branded average).  
b) Also winning the Commercial herd of the Year for the last 3 years (Crookwell area). Well done Dan.



*Fitzell cows*



## **Colin & Amanda McCrabb - Deniliquin Sale 2/10/16**

Shorthorn cows 740kg \$3.58 \$2649.20.



## **Ken & Mary McCrabb - Deniliquin Sale 2/10/16**

Shorthorn cows 665kg \$3.58 \$2380.70.



## **EJ & JG Lawson**

Shorthorn steers 629kg \$3.43 \$2157.47.



## **Dromore Station Wagga Market 22/8/16**

Shorthorn Cows 655kg \$3.23.2 per kg \$2116.96.

# 3 IN A ROW FOR FLOWERBURN

Flowerburn Pastoral, Crookwell, NSW shines a light on the production potential that producers can achieve from a well-managed and very dedicated breeding and management program.

Flowerburn is 3,500 acres of undulating to steep hill country in the 25-inch rainfall country of NSW's Central Tablelands. The property is owned and managed by Dan Fitzell and his dedication to the Flowerburn program is clearly driven by his pride for everything he does.

Flowerburn currently runs approximately 5,000 sheep as well as a Shorthorn herd. The bulk of the sheep program is a fine wool merino enterprise which includes breeding ewes and wethers as well as a small flock that produces approximately 500 XB lambs each year. Wool cut averages 18 microns and Mr. Fitzell has moved away from a traditional type of merino fleece, to producing a denser crimped, heavy cutting fleece.

"With the more traditional type of merino fleece we were producing, if you had a tough season, the wool would get a feed break and was less desirable for the buyers. With the dense crimping wool, a small feed break doesn't seem to worry the buyers anymore."

Flowerburn pastures are both improved and native however a fertiliser program is lifting stocking rates and between 200 to 450 rolls are conserved annually, depending on the season.

The Shorthorn herd has to perform whilst running with the sheep and Dan says that this is a real feature of the Shorthorn cattle. "The Shorthorn cows aren't affected by grazing with the sheep, they still perform really well with the sheep under them. They all run together and it depends on who needs the feed most as to who gets it." Running the cows with the sheep flock also allows for a more even grazing and better feed utilisation. "The cows will eat out the gullies and the creeks, where the sheep prefer to stay on top of the hills. The two groups really complement each other."

All calves are sire and dam identified, allowing Mr. Fitzell to trace their performance and to understand what each sire is delivering to the Flowerburn program. Weaners are yard weaned for a week, with steers then run in one group. Weaners are imprinted through the weaning process, something that Dan says sets them up to perform well in the feedlot in later life. "I spend about half an hour to an hour with them each day, moving through them, sometimes with a dog, just to make sure that the cattle are full acclimatised to being handled. We also run a little grain for them in troughs in the yard. That way they don't just stand around in the feedlot and sook when they first arrive. They know what a bunk looks like and go straight onto feed."

Steers are retained and grown out to feeder weights along with surplus heifers. This year the feeder cattle have also been treated with the JBS Australia Bovilis MH+IBR protocol which pays a \$15 per head premium for cattle that have been treated once between 4 weeks and 6 months prior to feedlot entry. We don't make much out of it, but it makes sure our customer is happy." Mr. Fitzell said.

Last year's surplus heifers were supplied to the JBS Australia's Thousand Guineas Shorthorn branded beef program. Flowerburn chose to support the Thousand Guineas program, in part to support the breed based program and in part because of the feedback on the cattle's performance. Every animal has its NLIS tag recorded against the Flowerburn management tag before the cattle leave the property, which allows them to trace the animals through the feedback sheet. "The heifers last year averaged a marble score of just over 3, which is a nice place to be in a minimum marble score 2 program."

Mr. Fitzell also took an opportunity to try the Thousand Guineas product at iconic Brisbane Steakhouse Hotel, The Norman. Last October, whilst in Brisbane, Dan made sure to call in on The Norman and try the Thousand Guineas steaks.

"We went there specially to try the product; this was the first chance we had. It is very satisfying to eat beef branded from your own breed. I did the math and there was a chance that it was from one of mine."

In 2015, Mr. Fitzell for the first time, decided to AI all of the Flowerburn heifers. The heifers were run through a Fixed Time AI program with technician Damian Sotter, Beef Genetics, Bathurst. "It is well worth paying a professional like Damian, it made the program run easily."

Semen for the program came from Sprys Shorthorns, Wagga. "We tried 2 bulls, with all feedback going back to Gerald Spry to progeny test the sires. We supply Gerald with calving ease details, weight gain and we will be able to supply carcass data as well."

Semen was dispatched from Sprys Shorthorns to Damian Sotter, meaning that Flowerburn did not need to buy their own semen tank. "The program is quite easy. Cidrs are implanted on Day 0, Cidrs come out on Day 7 and heifers are given a PG, then on Day 9 all the heifers are AI'd and given a shot of Gonabreed. There is really only 3 days' work and it's done."

Bulls go out about 4-5 days after the AI to back up the heifers. "We didn't reduce the number of bull we would normally use, but the bulls didn't have to stay out very long."

A key to the FTAI program is that bulls will only need to be out for 30 days to ensure the females have been given 3 chances to get in calf. The results of the program speak for themselves.

"We pre-tested the heifers after the bull came out and we had 95% of the mob in calf. When we calved them out we had 75% of the calves on the ground in the first 13 days, from the first round of AI. 97% of all the heifers were done calving in 45 days."

Mr. Fitzell said that FTAI offered a tremendous amount of benefits to the Flowerburn herd. "We spent less time chasing heifers calving and we were able to get a lot of jobs done with the spare time. The tight calving made it easier to manage condition scores on the heifers and now the heifers are set up for a tight joining, not only for the next joining but hopefully for life."

For Dan, FTAI has been a very favourable experience, "The calves have a much tighter spread on age and were born earlier, which will mean they should weight heavier at weaning and will be easier to market as a line."

The system is part of an ongoing effort between Flowerburn and Sprys Shorthorns of testing genetics in clients' herds, a venture that is ultimately beneficial for the stud as well as the clients' programs. "It's pleasing to work together to make the cattle better."

Flowerburn have used FTAI on their heifers again this year and plan to continue joining their heifers this way. One of the best features is the access to proven calving ease genetics and sires that would not normally be available without using AI.

"If the program is well planned and organised, it's not a drama."

The quest for improving genetics is earning Flowerburn praise from the wider industry. After competing in a

ewe trail, Mr. Fitzell saw an opportunity for a similar competition for cattle breeders in the local area. In conjunction with the Crookwell AP&H Society, the local show now runs a commercial breeders' competition each January, where heifers and cows from various herds are judged over 2 days. Breeders are required to present a large proportion of heifers and cows for judging in both a heifer and cow category. The event has been running for 2 years, this year's judges were Alastair Rayner, Rayner Ag and Gavin O'Brien, Winchester Charolais. This year's competition saw judges cast their eye over 10 entrants representing an approximate total of 5,000 Cows and 1,750 Heifers. Whilst the competition has only been running for 2 years, Flowerburn have won both categories both years. **Judge Alastair Rayner had higher praise for the Flowerburn herd. "They were a really even herd, moderate maturity, excellent shape, fertile and efficient. The kind of herd you want to hold up and say if you want to know what a great commercial herd looks like, here it is."**

The Flowerburn herd hasn't happened by accident either, with Mr. Rayner commenting on the Fitzells dedication to their breeding program. "They are capturing the data, keeping really good records and using the feedback to tell them where they need to go. The consistency of the herd is the kind that processors love to see."

"The cattle are definitely improving," Dan said, "Better genetics and pasture improvement are delivering clear benefits." Given the dedication of Mr. Fitzell and the quality base he has to work, adding FTAI to the tools available will ensure that the Flowerburn herd continues to impress judges for years to come.



# SALE INFORMATION

**"THE SELLING SYSTEM"** The sale shed is located in close proximity to the bull pens. The auctioneer sells the bulls by auction with video of each lot projected into the screen, rather than running the sale bulls into the sale ring. This system is becoming very well accepted and we believe it is buyer and animal friendly and concurs with modern occupational, health and safety requirements.

➤ **INSPECTION**

Bulls can be inspected prior to sale with arrangements with the vendor or selling agent. This gives us the opportunity to assist in selection of the best genetics for your requirements.

➤ **GUARANTEE BULLS AND SOUNDNESS EVALUATION as per attachment.**

➤ **BREEDING GUARANTEE**

**BULLS:-** All bulls soundness evaluated by an independent Veterinarian prior to sale.

In the unlikely event of a claim, the vendor guarantees that (without expenses, interest, costs and damages) if any bull proves to be totally infertile or totally incapable of natural service, provided it is not caused by an injury or disease contracted since leaving the sale to replace with an animal of comparable value. If a bull does not possess a reasonable fertility, although not totally infertile any claim shall be considered on its merits by the vendor and his Veterinarian. Any complaint must be lodged with a relevant Veterinary Certificate within 6 months of the date of the Sale direct to the vendor.

➤ **HEALTH**

TB and Brucellosis free herd. JD status is Protected.

All bulls have vaccinated twice with 7 in 1. Also vaccinated against Vibriosis once, make sure you give the 2nd vaccination.

Bulls have been tested negative for persistently infected Pestivirus (BVDV) and vaccinated with Pestiguard.

**Please note:** The bulls in this catalogue have never been handled with horses. We recommend that if you use horses that you move your new bull with non cycling cattle so they are not spooked by a new situation. We also recommend that the new bulls are moved on their own by motorbike as this is what they are used to. We also use dogs on bulls. Gradually introduce the movement of bulls with horses so they can adapt in their own time.

➤ **DELIVERY**

We take personal interest in efficient delivery of all lots after the sale – contact Gerald direct with a minimum of 24 hours notice.

➤ **AUCTIONSPLUS**

This sale is interfaced with Auctionsplus. This will enable remote bidders to operate in the sale from their location via computer. Bidding will only be available to registered Auctionsplus users. Prospective bidders must register at least 24 hours prior to sale with Auctionsplus. Contact Auctionsplus 02 92624222 [www.auctionsplus.com.au](http://www.auctionsplus.com.au) or Tom Wilding-Davies 0429 570 504.

➤ **BUYERS ORDERS AND PHONE LINK UP**

Mobile phones operate successfully at the Sale Shed (Venue). We encourage potential purchasers who are unable to attend the sale to make arrangements with the vendor or his Agent if you wish to be contacted during the sale to place bids. Please make arrangements at least 48 hours prior to sale.

➤ **PERSONAL TRANSPORT TO AND FROM SALE VENUE**

We can arrange transport to and from the sale venue, please contact the selling Agent or Sprys.

➤ **TRANSPORT OF YOUR PURCHASED ANIMALS**

Stud Stock transport representatives will be available on sale day.

Please speak with Gerald regarding his recommendations.

No delivery on sale day.

Transport rebate to \$100 per bull given to purchasers in Sth Australia, Qld, Tasmania & Kl.

➤ **INSURANCE**

We encourage you to insure your purchased lot or lots. All care will be taken from the fall of the gavel but it is the purchaser's responsibility for any injury or death. An insurance agents will be in attendance Sale day.

➤ **ACCOMMODATION**

We can arrange accommodation or contact the Motels direct. We recommend:

Pavilion Motor Inn

22 Kincaid Street

WAGGA WAGGA

Ph: (02) 6921 6411

➤ **PLEASE NOTE**

It is unethical for anyone to promote or advertise or arrange the sale of cattle, other than those Vendors in the sale, unless with permission by the vendors.

➤ **AIR FACILITIES**

Good airport facilities are at Wagga and Albury and private planes may also use Holbrook.

➤ **CATERING**

Complimentary morning tea and lunch will be available prior to the sale, catered for by Little Billabong CWA.

➤ **OUTSIDE AGENT REBATE**

1. The Vendors agree to allow a rebate to outside Agents introducing their client in writing within 24 hours prior to the sale and settling on their behalf within 7 days of the sale. (This clause will be strictly enforced). Introductions must be sent direct to the Vendors.

2. Any outside Agent travelling a distance to the sale with their client and settling on their behalf within 7 days should contact the Vendor prior for approval of a larger rebate.

**Sale Catalogue Disclaimer:** All reasonable care has been taken to ensure that the information provided in this catalogue is correct at the time of publication. However, neither the vendor or the selling agents make no other representations about the accuracy, reliability or completeness of any information provided in this catalogue and do not assume any responsibility for the use or interpretation of the information in this catalogue. You are encouraged to seek independent verification of any information contained in this catalogue before relying on such information.

## IMPORTANT NOTICES

**The Selling Agent, its members, subsidiary or related corporations, officers, agents, and employees for themselves and for those for whom they act while exercising due care provide all information without responsibility and give no guarantee whatsoever as to its accuracy.**

**All persons who attend the sale do so entirely at their risk and the Selling Agent, its members, subsidiary or related corporations, officers, agents, employees and its principals, for themselves and for those for whom they act, do not assume or accept any responsibility or liability of whatever nature for any injury or damage whatsoever which may occur.**



# EXPLANATORY NOTES FOR CATALOGUES

Only Shorthorn GROUP BREEDPLAN EBV's can be validly compared between herds.

## ESTIMATED BREEDING VALUES (EBVs)

An animal's breeding value is its genetic merit, half of which will be passed on to its progeny. While we will never know the exact breeding value, for performance traits it is possible to make good estimates. These are called Estimated Breeding Values (EBVs). The EBV is therefore the best estimate of an animal's genetic merit for that trait. EBVs are expressed as the difference between an individual animal's genetics and the genetic base to which the animal is compared.

## ACCURACY

An accuracy value is presented with every EBV and gives an indication of the amount of information that has been used in the calculation of that EBV. The higher the accuracy, the lower the likelihood of change in the animal's EBV as more information is analysed for that animal or its relatives. The following guide is given for interpreting accuracy:

Accuracy Range	Interpretation
Less than 50%	Low accuracy and should be considered a preliminary estimate. The EBV could change substantially as more performance information becomes available.
50 - 74%	Medium accuracy, usually based on the animal's own records and pedigree.
75 - 90%	Medium-high accuracy and usually includes some progeny information. Becoming a more reliable indicator of the animal's value as a parent.
90% and above	High accuracy. It is unlikely that the EBV will change much with the addition of more progeny data.

As a rule, animals should be compared on EBVs regardless of accuracy. However, where two animals have similar EBVs the one with higher accuracy could be the safer choice, assuming other factors are equal.

## TRAITS

### Calving Ease

EBVs are based on calving ease (CE) scores, birth weights and gestation length information. More positive EBVs are favourable and indicate easier calving.

**Direct calving ease** indicates how this animal influences the birth of its progeny.

**Daughter's calving ease** indicates how well the animal produces daughters that have easier calving.

## BIRTH

**Gestation Length** EBV (days) is based on AI records. Lower (negative) GL EBVs indicate easier calving and increased growth after birth.

**Birth Weight** EBV (kg) is based on the measured birth weight of animals, adjusted for dam age. The lower the value the lighter the calf at birth and the lower the likelihood of a difficult birth. This is particularly important when selecting sires for use over heifers.

## FERTILITY

**Scrotal Size** EBV (cm) is an indicator of male fertility in regards to semen quality and quantity. Higher (positive) EBVs indicate higher fertility. SS is also positively associated with female fertility.

**Days to Calving** EBV (days) is an indicator of female fertility based on the time between a cow's first exposure to a bull and when she subsequently calved. Cows that calve late in the season or fail to calve are penalised. Lower (negative) EBVs are preferred indicating shorter days to calving for the sire's daughters.

## GROWTH

**200-Day Milk** EBV (kg) is an estimate of an animal's milking ability. For sires, this EBV is indicative of their daughter's milking ability as it affects the 200 and 400 day weight of their calves.

**200-Day Growth** EBV (kg) is calculated from the weight of animals taken between 80 and 300 days of age. Values are adjusted to 200

days and for age of dam. This EBV is the best single estimate of an animal's genetic merit for growth to early ages.

**400-Day Weight** EBV (kg) is calculated from the weight of progeny taken between 301 and 500 days of age, adjusted to 400 days and for age of dam. This EBV is the best single estimate of an animal's genetic merit for yearling weight.

**600-Day Weight** EBV (kg) is calculated from the weight of progeny taken between 501 and 900 days of age, adjusted to 600 days and for age of dam. This EBV is the best single estimate of an animal's genetic merit for growth beyond yearling age.

**Mature Cow Weight** EBV (kg) is an estimate of the genetic different in cow weight at 5 years of age.

## CARCASE

**Carcase Weight** EBV (kg) estimates the genetic difference in carcass weight at a standard age of 650 days.

**Eye Muscle Area** EBV (cm<sup>2</sup>) estimates genetic differences in eye muscle area at the 12/13th rib site of a 300kg dressed carcass. More positive EBVs indicate better muscling on animals.

**Rib Fat** EBV (mm) estimates the genetic differences in fat depth at the 12/13th rib in a 300kg dressed carcass. More positive EBVs indicate more subcutaneous fat and earlier maturity.

**Rump Fat** EBV (mm) estimates the genetic differences in fat depth at the P8 site of a 300kg dressed carcass. More positive EBVs indicate more subcutaneous fat and earlier maturity.

**Retail Beef Yield** Percent EBV (%) represents total (boned out) meat yield as a percentage of a 300kg dressed carcass. A more positive EBV indicates higher percentage yield for the 300kg carcass size.

**Intra-muscular Fat** Percent EBV (%) is an estimate of the genetic difference in the percentage of intra-muscular fat at the 12/13th rib site in a 300kg carcass. Depending on market targets, larger more positive values are generally more favourable.

## SELECTION INDICES

**Domestic Maternal Index (DM)** - Estimates the genetic differences between animals in net profitability per cow joined for an example commercial herd in a temperate environment (e.g. Shorthorn, Angus or Hereford cows) targeting pasture grown and finished steers for the domestic trade (eg. supermarket). Steers are marketed at 480 kg live weight (260 kg HSCW and 10 mm P8 fat depth) at 16 months of age. Daughters are retained for breeding.

**Export Maternal Index (EM)** - Estimates genetic differences between animals in net profitability per cow joined for an example commercial herd in a temperate environment (e.g. Shorthorn, Angus or Hereford cows) targeting steers for the Japanese B3 market. Steers are pasture grown to feedlot entry then feedlot finished for 150 days. Steers are marketed to the feedlot at 450 kg live weight, and then slaughtered after finishing at 675 kg live weight (370kg HSCW). Daughters are retained for breeding.

**Northern Maternal Index (NM)** - Estimates the genetic differences between animals in net profitability per cow joined for an example commercial herd in Northern Australia (e.g. Braham, Droughtmaster or Santa Gertrudis cows) targeting the export trade. Steers are finished on grass and marketed at 600 kg live weight (320 kg HSCW and 10 mm P8 fat depth) at 28 months of age. Daughters are retained for breeding.

The Trans-Tasman Shorthorn GROUP BREEDPLAN Estimated Breeding Values contained in this Sale Catalogue were compiled by the Agricultural Business Research Institute (ABRI) from data supplied by the breeders. Neither the Shorthorn Society of Australia, the Beef Shorthorn Society of Australia, the New Zealand Beef Shorthorn Association nor the ABRI oversee or audit the collection of this data.

# REFERENCE SIRES

## REFERENCE SIRE

## OUTBACK SPRYS BALANCE G266 (P)(ET)(AI)

DOB: 26/03/2011

Colour: Red

Ident No.: OB G266

GENEFLE UNDERWOOD (P) Red

COOLONG XS574 (P) (SFA) Red Little White

COOLONG ST449 (P) (SFA)

Sire: **GLENELL IMF B90 (P) (SFA) Red**

SPRYS GRANDSLAM T58 (P) (ET) (AI) Roan

GLENELL X154 (P) (SFA)

GUMBLE URANUS 3RD (P) (AI) Red Little White

SPRYS RED URANUS V112 (H) (AI) Red

GENEFLE FLAPPER (P) (SFA) (APX) Roan

Dam: **SCHULLER RED KATE C1 (P) (TWIN) (AI) Red**

JR LEGEND 78H (IMP USA) (P) Red

SPRYS LEGENDS KATE Y031 (P) (ET) (AI) Red

MOOMBI KATE S50 (P) Roan

### February 2017 Shorthorn GROUP BREEDPLAN

	Calving Ease DIR (%)	Calving Ease DTRS (%)	Gestation Length (days)	Birth Wt. (kg)	200 Day Wt. (kg)	400 Day Wt. (kg)	600 Day Wt. (kg)	Mat. Cow Wt. (kg)	Milk (kg)	Scrotal Size (cm)	Days to Calving (days)	Carcase Wt. (kg)	Eye Muscle Area (sq.cm)	Rib Fat (mm)	Rump Fat (mm)	Retail Beef Yield (%)	IMF (%)
<b>EBV</b>	<b>-2.1</b>	<b>+1.8</b>	<b>+3.8</b>	<b>+3.3</b>	<b>+31</b>	<b>+54</b>	<b>+55</b>	<b>+40</b>	<b>+4</b>	<b>+1.2</b>	<b>+1.6</b>	<b>+34</b>	<b>+2.0</b>	<b>+2.3</b>	<b>+5.0</b>	<b>-1.6</b>	<b>+0.9</b>
ACC	76%	65%	83%	94%	92%	91%	92%	78%	61%	88%	61%	75%	79%	82%	81%	76%	69%

NB: Shaded areas signify a trait leader for that trait.

Traits Observed: BWT, 200WT, 400WT, SS, FAT, EMA, IMF

Balance G266 has proved a valuable asset to our herds with explosive 400 day wt then easing to 600 which is ideal for the beef industry in Australia. He has worked extremely well on the Ace G38, Patent and Rock Solid daughters. Trait leader for 400 & IMF. Great bull to use in the Thousand Guineas branded product (use his sons).



## OUTBACK SPRYS BALANCE G266

## REFERENCE SIRE

## SPRYS TLC CANYON C056 (P) (AI)

DOB: 20/09/2007

Colour: Red

Ident No.: MKSC056

MEL-BAR RODEO DRIVE 347 (P) Red

BYLAND LEGACY SRD15 ET (H) Red

BYLAND VELVET D25 (H) Red Little White

Sire: **JR LEGEND 78H (IMP USA) (P) Red**

ADVANCE DESIGN (H) Roan

JR FANCY LADY 96E (P) Red Little White

WF FANCY LADY (P) Red and White

EDEN PARK RED EAGLE U002 (P) (ET) (AI) Red

THE GROVE KASPROWICZ W791 (P) Red

THE GROVE DALE 39TH (P) Red

Dam: **THE GROVE PRIMROSE A742 (P) (ET) (AI) Red**

EVILO SUPER STAR L32 (P) (AI) Red

THE GROVE PRIMROSE R202 (P) Red

THE GROVE PRIMROSE 18TH (P) Red

### February 2017 Shorthorn GROUP BREEDPLAN

	Calving Ease DIR (%)	Calving Ease DTRS (%)	Gestation Length (days)	Birth Wt. (kg)	200 Day Wt. (kg)	400 Day Wt. (kg)	600 Day Wt. (kg)	Mat. Cow Wt. (kg)	Milk (kg)	Scrotal Size (cm)	Days to Calving (days)	Carcase Wt. (kg)	Eye Muscle Area (sq.cm)	Rib Fat (mm)	Rump Fat (mm)	Retail Beef Yield (%)	IMF (%)
<b>EBV</b>	<b>+8.1</b>	<b>+4.7</b>	<b>-2.6</b>	<b>+3.3</b>	<b>+33</b>	<b>+50</b>	<b>+69</b>	<b>+45</b>	<b>+5</b>	<b>+2.5</b>	<b>-3.9</b>	<b>+42</b>	<b>+3.0</b>	<b>-0.5</b>	<b>-0.5</b>	<b>+0.6</b>	<b>+0.6</b>
ACC	67%	58%	69%	91%	86%	88%	85%	74%	58%	81%	61%	72%	76%	79%	79%	74%	68%

NB: Shaded areas signify a trait leader for that trait.

Traits Observed: BWT, 400WT, SS, FAT, EMA, IMF

Trait leader for 400 & 600 wt and Scrotal Size. Canyon was an outstanding sire who really excels in all traits. Medium maturity, very well muscled with tremendous length with soundness.

He was used extensively in the Dromore herd before being sold for stud duties. His daughters are excellent cows with plenty of do-ability in the harsh environment.



## SPRYS TLC CANYON C056

# REFERENCE SIRES

## REFERENCE SIRE

## SPRYS ROCK SOLID H5 (P) (ET) (AI)

**DOB:** 12/02/2012

**Colour:** Red

**Ident No.:** GLSH5

WAUKARU GOLDSHIP (IMP USA) (P) Red

SPRYS ZAMBESI 2ND (P) (DS) Roan

WAUKARU GOLD CARD 5042 (IMP USA) (P) Red

EDEN PARK STOCKMAN (P) (AI) Red

WAUKARU COLONIAL NAN 233 (P) Red

EDEN PARK LEGENDS FRANCES W004 (P) (ET) (AI) Red

**Sire:** WAUKARU PATENT 8161 (IMP USA) (P) (ET) Red

**Dam:** SCHULLER ANN B47 (P) Red

C P BOSTON BODACIOUS 12H (IMP CAN) (P) Red

CHADWICK R127 (H) (SFA) Roan

WAUKARU 12H MELITA ROSE 5021 (H) Red

WAUKARU MELITA ROSE 0144 (P) Red

### February 2017 Shorthorn GROUP BREEDPLAN

	Calving Ease DIR (%)	Calving Ease DTRS (%)	Gestation Length (days)	Birth Wt. (kg)	200 Day Wt. (kg)	400 Day Wt. (kg)	600 Day Wt. (kg)	Mat. Cow Wt. (kg)	Milk (kg)	Scrotal Size (cm)	Days to Calving (days)	Carcase Wt. (kg)	Eye Muscle Area (sq.cm)	Rib Fat (mm)	Rump Fat (mm)	Retail Beef Yield (%)	IMF (%)
<b>EBV</b>	<b>-10.5</b>	<b>-3.9</b>	<b>-1.4</b>	<b>+4.1</b>	<b>+44</b>	<b>+66</b>	<b>+85</b>	<b>+64</b>	<b>+8</b>	<b>+1.8</b>	<b>+0.3</b>	<b>+55</b>	<b>+7.8</b>	<b>-1.1</b>	<b>-2.8</b>	<b>+2.4</b>	<b>+0.3</b>
ACC	64%	49%	65%	93%	89%	90%	88%	72%	51%	85%	55%	71%	75%	78%	77%	71%	65%

NB: Shaded areas signify a trait leader for that trait.

Traits Observed: BWT, 200WT, 400WT, SS, FAT, EMA, IMF

Trait leader for 200, 400 & 600wt also EMA & RBY. Rock Solid H5 combines an excellent blend of performance & function and will add the extra kgs to your calves plus extra red meat yield with plenty of carcass shape. We have been very impressed with his progeny.



**SPRYS ROCK SOLID H5**

## REFERENCE SIRE

## GLENGYRON GOVERNOR (P)

**DOB:** 04/09/2011

**Colour:** Red Little White

**Ident No.:** TPSG18

COOLONG XSS74 (P) (SFA) Red Little White

JR LEGEND 78H (IMP USA) (P) Red

GLENELL IMF B90 (P) Red

SPRYS PIONEER A201 (P) (ET) (AI) Red Little White

GLENELL X154 (P) (SFA)

NARRALDA UNEATA N48 (P) (AI) Red Little White

**Sire:** SPRYS IMF'S LEGEND E020 (P) Red Little White

**Dam:** GLENGYRON ROSE 66 (P) Red Little White

JR LEGEND 78H (IMP USA) (P) Red

WANNON PARK PURE CLASS (P) (ET) (AI) Red

SPRYS LEGENDS MARGLORY Y069 (P) (ET) (AI) Roan

GLENGYRON ROSE 43RD (P) Red

GENEFEE MARGLORY 4TH (P) Red Little White

GLENGYRON ROSE 37TH (P) Roan

### February 2017 Shorthorn GROUP BREEDPLAN

	Calving Ease DIR (%)	Calving Ease DTRS (%)	Gestation Length (days)	Birth Wt. (kg)	200 Day Wt. (kg)	400 Day Wt. (kg)	600 Day Wt. (kg)	Mat. Cow Wt. (kg)	Milk (kg)	Scrotal Size (cm)	Days to Calving (days)	Carcase Wt. (kg)	Eye Muscle Area (sq.cm)	Rib Fat (mm)	Rump Fat (mm)	Retail Beef Yield (%)	IMF (%)
<b>EBV</b>	<b>+0.6</b>	<b>+0.4</b>	<b>-1.1</b>	<b>+2.9</b>	<b>+28</b>	<b>+45</b>	<b>+42</b>	<b>+38</b>	<b>+3</b>	<b>+1.1</b>	<b>+0.5</b>	<b>+34</b>	<b>+6.5</b>	<b>-0.9</b>	<b>-2.2</b>	<b>+1.8</b>	<b>+0.8</b>
ACC	54%	40%	65%	84%	78%	78%	80%	66%	41%	74%	46%	63%	65%	71%	71%	64%	55%

NB: Shaded areas signify a trait leader for that trait.

Traits Observed: BWT, 200WT, 400WT, SS, FAT, EMA, IMF

Trait leader for EMA. Governor has been a very impressive individual who has tremendous thickness and depth in a very sound package. His sire is out of Sprys Double Barrel dam and the Glenell IMF descendants have proved to hang on well in tough times and have that medium maturity which has proved ideal for the markets we have access to in Australia. Anyone who has seen Governor have been impressed.

Semen available.



**GLENGYRON GOVERNOR**

# REFERENCE SIRES

## REFERENCE SIRE **OUTBACK SPRYS SOLUTION H283 (P)**

**DOB:** 08/08/2012

**Colour:** Red

**Ident No.:** OB H283

COOLONG XS574 (P) (SFA) Red Little White

JR LEGEND 78H (IMP USA) (P) Red

GLENELL IMF B90 (P) Red

SPRY'S FAIR DINKUM Z027 (P) (ET) (AI) Roan

GLENELL X154 (P) (SFA)

MOOMBI KATE S50 (P) Roan

**Sire: SPRYS SOLUTION E006 (P) Red**

**Dam: OUTBACK DIVA D07 (P) Red**

ALTA CEDAR ULTIMATE 130K (IMP CAN) (H) Red

LONE PINE RICHMOND Q18 (P) Roan

SPRYS AC. ULTIMATE M. NIAM A101 (P) (ET) (AI) Red Little White

ERAMBIE POI SONG 48 (P) Roan

HC MELBA NIAM 98H (IMP CAN) (P) Red

ERAMBIE POI SONG 37 (P) Red

### February 2017 Shorthorn GROUP BREEDPLAN

	Calving Ease DIR (%)	Calving Ease DTRS (%)	Gestation Length (days)	Birth Wt. (kg)	200 Day Wt. (kg)	400 Day Wt. (kg)	600 Day Wt. (kg)	Mat. Cow Wt. (kg)	Milk (kg)	Scrotal Size (cm)	Days to Calving (days)	Carcase Wt. (kg)	Eye Muscle Area (sq.cm)	Rib Fat (mm)	Rump Fat (mm)	Retail Beef Yield (%)	IMF (%)
<b>EBV</b>	<b>+1.5</b>	<b>+3.0</b>	<b>+1.0</b>	<b>+3.1</b>	<b>+27</b>	<b>+39</b>	<b>+45</b>	<b>+50</b>	<b>+4</b>	<b>+0.9</b>	<b>+0.4</b>	<b>+33</b>	<b>+4.0</b>	<b>+0.3</b>	<b>+0.9</b>	<b>0.3</b>	<b>+0.9</b>
ACC	53%	42%	71%	79%	76%	77%	76%	67%	51%	77%	50%	62%	63%	69%	69%	63%	54%

NB: Shaded areas signify a trait leader for that trait.

Traits Observed: CE, BWT, 200WT, 400WT, SS, FAT, EMA, IMF

H283 is a soft, easy doing bull with excellent progeny carcase data from Adrian Goode. A big asset for adding do-ability and marbling to your herd.



**OUTBACK SPRYS SOLUTION H283 (P)**



**SPRYS MISS INFORMANT L86 sold at 2016 Sale to Spencer family.**

**Grand Champion Adelaide Royal, Grand Champion Heifer Junior Heifer Show & winner of both performance classes.**

**PURCHASER OF THE  
TOP PRICED LOT  
FROM 1-7**

will receive a 500ml pack  
of Multi-Min  
courtesy of  
Virbac.

**PURCHASER OF MOST  
LOTS AT AUCTION  
will receive:**

Half tonne Fabstock Mineral  
courtesy Doug Walker  
(see adv. page).

**PURCHASER OF THE  
TOP PRICED BULL  
will receive:**

2 x 500ml packs of  
MultiMin  
courtesy of  
Virbac.

**Table 1.** Average EBVs for the 2015 born animals analysed in the 2017 February Shorthorn GROUP BREEDPLAN.

<b>CE Direct</b> EBV	<b>CE Dtrs</b> EBV	<b>Gest Length</b> EBV	<b>Birth Weight</b> EBV	<b>Scrotal Size</b> EBV	<b>200 Day Milk</b> EBV	<b>200-Day Growth</b> EBV	<b>400-Day Weight</b> EBV	<b>600-Day Weight</b> EBV	<b>Days to Calving</b> EBV
<b>+0.5</b>	<b>+0.6</b>	<b>-1.5</b>	<b>+3.1</b>	<b>+1.4</b>	<b>+6</b>	<b>+2.6</b>	<b>+36</b>	<b>+49</b>	<b>-1.1</b>
<b>Mature Weight</b> EBV	<b>Carcase Weight</b> EBV	<b>EMA</b> EBV	<b>Rib Fat</b> EBV	<b>Rump Fat</b> EBV	<b>RBV%</b> EBV	<b>IMF%</b> EBV	<b>Domestic Maternal Index</b> (\$)	<b>Export Maternal Index</b> (\$)	<b>Northern Maternal Index</b> (\$)
<b>+43</b>	<b>+33</b>	<b>+4.1</b>	<b>-0.5</b>	<b>-0.5</b>	<b>+1.0</b>	<b>+0.5</b>	<b>+29</b>	<b>+32</b>	<b>+37</b>

## VISUAL APPRAISAL

Although EBV's provide an estimate of an animal's genetic merit for a range of production traits, they do not provide information for all of the traits that must be considered during selection of **functional** animals. In all situations, EBV's should be used in conjunction with visual assessment for other traits of importance (structural soundness, temperament, fertility etc). A recommended practise is to firstly select replacement breeding stock based on EBV's and to then select from this group to ensure that the final selections are visually acceptable.

## FEMALES & GENETIC PACKAGES

### LOT 1

### SPRYS ATHLETES PATTIE H236 (P)

**DOB:** 22/08/2012

**Colour:** Red

**Ident No.:** GLSH236

FUTURITY WALLABY W23 (P) (ET0 (AI) Red  
BROUGHTON PARK VICTORY B111 (P) Red  
BROUGHTON PARK COUNTESS Y010 (P) (AI) Red

EDEN PARK DUNDAS AWESOME (P) (AI) White  
ARUBIAL JUPITER Y165 (P) Red Little White  
ARUBIAL V101 (P) (AI) Roan

**Sire:** NENTOURA ATHLETIC E13 (P) Red

**Dam:** SPRYS JUPITERS PATTIE B124 (P) Red

FUTURITY TRANSFORMER (P) (AI) Red  
NENTOURA SUMMERTON B16 (P) Red  
NENTOURA SUMMERTON Y28 (P) Red

JR RED RYDER 92F (IMP USA) (P) Red Little White  
TURANVILLE PATTIE W10 (P) (ET) (AI) Red  
MARELLAN PATTIE 28TH (P) Roan

### February 2017 Shorthorn GROUP BREEDPLAN

	Calving Ease DIR (%)	Calving Ease DTRS (%)	Gestation Length (days)	Birth Wt. (kg)	200 Day Wt. (kg)	400 Day Wt. (kg)	600 Day Wt. (kg)	Mat. Cow Wt. (kg)	Milk (kg)	Scrotal Size (cm)	Days to Calving (days)	Carcase Wt. (kg)	Eye Muscle Area (sq.cm)	Rib Fat (mm)	Rump Fat (mm)	Retail Beef Yield (%)	IMF (%)	Dom. Mat. Index (\$)	Export Mat. Index (\$)	Nth Mat. Index (\$)
<b>EBV</b>	<b>+0.4</b>	<b>-4.0</b>	<b>-0.3</b>	<b>+4.1</b>	<b>+29</b>	<b>+44</b>	<b>+57</b>	<b>+59</b>	<b>+3</b>	<b>+1.7</b>	<b>-2.3</b>	<b>+36</b>	<b>+3.7</b>	<b>-0.1</b>	<b>+0.3</b>	<b>+0.8</b>	<b>+0.4</b>	<b>+\$25</b>	<b>+\$25</b>	<b>+\$28</b>
ACC	41%	33%	48%	70%	64%	64%	63%	67%	46%	54%	36%	50%	47%	51%	51%	46%	40%			

*Traits Observed:* CE, BWT, MWT

Selling an outstanding female in the prime of her life who could be used as a Donor. Sells with red bull calf at foot, M273 DOB 8/10/16, Sired by Eloora Dallas J90.

Rejoined to Sprys Balance L41 (Lot 9) would also make a great Show cow (Broken in and shown as a heifer). Her Dam was sold to UK and embryos exported back by Chris Nye.



**LOT 1**

Purchaser: ..... \$ .....

# LOT 2 SPRYS FREE SPIRITS JULIET M57 (P) (AI)

**DOB:** 02/08/2016      **Colour:** Roan      **Ident No.:** GLSM57

SULL GNCC SALUTE 532R (P) Roan      WEEBOLLABOLLA THEODORE T85 (P) Roan  
 HCTIMELINE 17T (P) Roan      ROYALLA EXTERMINATOR (P) Roan  
 SHADYBROOK PRESTO 73G (IMP CAN) (P) Red      ROYALLA ITA 10TH (P) Roan

**Sire:** HC FREE SPIRIT 6Y (P) Roan      **Dam:** SPRYS EXT JULIET D058 (P) (AI) Red Little White  
 DIAMOND CAPTAIN MARK 27C (P) Roan      SOUTHCOTE VOODOO V35 (P) (AI) Red  
 NEW BEGINNINGS ELSIE'S JADE (IMP CAN) (H) Red Little White      SPRYS VOODOOS JULIET B104 (P) Red  
 DIAMOND FIRST ELSIE 1F (P) Roan      SPRYS LEGENDS JULIET Y082 (P) (AI) Roan

## February 2017 Shorthorn GROUP BREEDPLAN

	Calving Ease DIR (%)	Calving Ease DTRS (%)	Gestation Length (days)	Birth Wt. (kg)	200 Day Wt. (kg)	400 Day Wt. (kg)	600 Day Wt. (kg)	Mat. Cow Wt. (kg)	Milk (kg)	Scrotal Size (cm)	Days to Calving (days)	Carcase Wt. (kg)	Eye Muscle Area (sq.cm)	Rib Fat (mm)	Rump Fat (mm)	Retail Beef Yield (%)	IMF (%)	Dom. Mat. Index (\$)	Export Mat. Index (\$)	Nth Mat. Index (\$)
<b>EBV</b>	<b>+0.4</b>	<b>-0.6</b>	<b>-0.1</b>	<b>+3.5</b>	<b>+23</b>	<b>+29</b>	<b>+35</b>	<b>+29</b>	<b>+5</b>	<b>+1.8</b>	<b>-1.9</b>	<b>+24</b>	<b>+3.3</b>	<b>+0.1</b>	<b>+0.3</b>	<b>+0.6</b>	<b>+0.7</b>	<b>+\$25</b>	<b>+\$28</b>	<b>+\$28</b>
ACC	33%	27%	65%	67%	54%	51%	53%	47%	33%	37%	29%	36%	37%	37%	37%	33%	31%			

*Traits Observed:*

Unjoined.  
 Maternal brother sells as Lot 14.

An outstanding young female who could be destined to make a top Show heifer and breeding female. This is a rare opportunity to get the first female to sell by HC Free Spirit (Canada).

Sells unjoined with 2 straws semen in Sprys Primroses Buddy J17 ex Holbrook Breeders.



**LOT 2**

Purchaser: ..... \$ .....

# LOT 3 SPRYS FREE SPIRITS PATTIE M16 (P) (AI)

**DOB:** 02/04/2016      **Colour:** Roan      **Ident No.:** GLSM16

SULL GNCC SALUTE 532R (P) Roan      SPRYS GRANDSLAM Q23 (P) (ET) Red  
 HCTIMELINE 17T (P) Roan      NARRALDA WARRIOR V11 (P) (AI) Roan  
 SHADYBROOK PRESTO 73G (IMP CAN) (P) Red      NARRALDA ROBIN Q1 (P) (TWIN) (AI) Roan

**Sire:** HC FREE SPIRIT 6Y (P) Roan      **Dam:** LACHLAN PATTIE (P) Roan  
 DIAMOND CAPTAIN MARK 27C (P) Roan      DUNBEACON WAGMAN (P) Roan  
 NEW BEGINNINGS ELSIE'S JADE (IMP CAN) (H) Red Little White      SPRYS WAGMANS PATTIE A020 (P) Red  
 DIAMOND FIRST ELSIE 1F (P) Roan      SPRYS RC PATTIE W192 (P) (ET) (AI) Red

## February 2017 Shorthorn GROUP BREEDPLAN

	Calving Ease DIR (%)	Gestation Length (days)	Birth Wt. (kg)	200 Day Wt. (kg)	400 Day Wt. (kg)	600 Day Wt. (kg)	Mat. Cow Wt. (kg)	Milk (kg)	Scrotal Size (cm)	Carcase Wt. (kg)	Eye Muscle Area (sq.cm)	Rib Fat (mm)	Rump Fat (mm)	Retail Beef Yield (%)	IMF (%)	Dom. Mat. Index (\$)	Export Mat. Index (\$)	Nth Mat. Index (\$)
<b>EBV</b>	<b>+3.5</b>	<b>-2.1</b>	<b>+2.7</b>	<b>+19</b>	<b>+23</b>	<b>+30</b>	<b>+33</b>	<b>+5</b>	<b>+0.9</b>	<b>+25</b>	<b>+3.7</b>	<b>-0.7</b>	<b>-0.8</b>	<b>+1.1</b>	<b>+0.5</b>	<b>+\$25</b>	<b>+\$28</b>	<b>+\$28</b>
ACC	28%	61%	61%	55%	49%	49%	41%	27%	32%	34%	30%	29%	30%	26%	25%			

*Traits Observed:*

Unjoined.  
 Another great heifer by Free Spirit 6Y who combines soundness, depth & thickness in a medium maturity package and should make a very productive, functional cow.

Sells with 2 straws semen from Sprys Primroses Buddy J17 ex Holbrook Breeders.



**SIRE - HC FREE SPIRIT 6Y**

Purchaser: ..... \$ .....

# LOT 4      SELLING ONE PREGNANT RECIPIENT JSF GAUGE 137W (USA) X SBF PERFECT MILLIE 19A (CANADA)

**Impant Date: 09/12/2016    Due: 11/09/2017**

Shorthorn recipient Stud Cow GLSJ51.

Selling pregnant recipient with a female pregnancy (guaranteed) from the joining of SBF Perfect Millie 10A X JSF Gauge 137W. (Guaranteed live heifer calf).

## SBF PERFECT MILLIE 19A ET

**DOB:** 15/01/2012      **Colour:** Roan      **Ident No.:** MAX 19A

WAUKARU GOLDSHIP (IMP USA) (P) Red  
WAUKARU GOLD CARD 5042 (IMP USA) (P) Red  
WAUKARU COLONIAL NAN 233 (P) Red

SHADYBROOK ROYAL MARC 32H  
SHADYBROOK MILENIUM  
SHADYBROOK LINDORA 9H

**Sire: WAUKARU PATENT 8161 (IMP USA) (P) (ET) Red**

**Dam: SBF PERFECT MILLIE 23X ET**

C P BOSTON BODACIOUS 12H (IMP CAN) (P) Red  
WAUKARU 12H MELITA ROSE 5021 (H) Red  
WAUKARU MELITA ROSE 0144 (P) Red

CF TRUMP X  
SHADYBROOK PICTURE 201M ET  
SBF PICTURE PERFECT 1078 ET

### 2017 SPRING EPDs (USA)

	GROWTH AND MATERNAL							CARCASE				INDEXES		
	CED	BW	WW	YW	MK	TM	CEM	CW	REA	MB	FT	\$CEZ	\$BMI	\$F
<b>EPD</b>	<b>2</b>	<b>2.9</b>	<b>80</b>	<b>101</b>	<b>6</b>	<b>46</b>	<b>0</b>	<b>33</b>	<b>0.10</b>	<b>0.09</b>	<b>-0.01</b>	2.40	116.63	65.34
+/- Chg	7	2.4	13	21	10		7	17	0.39	0.23	0.04			
ACC	0.25	0.25	0.23	0.23	0.23		0.23	0.19	0.14	0.16	0.17			
% Rank	65	55	1	1	>95	30	55	2	15	25	95	85	35	1

## JSF GAUGE 137W

**DOB:** 11/09/2009      **Colour:** Red      **Ident No.:** 137W

LCS DESIGNER  
BYLAND AXIS 1D85  
BYLAND VELVET E 17

MM RED OAK THD94  
KL DUPLICATOR  
KL PRINCESS BETH ANN

**Sire: SBR TSUNAMI 20T**

**Dam: KL MINA STAR 1051**

DFS RED RIDER 844 ET  
SBR DEE 232  
SBR DEE 806

KL DOUBLE DUKE  
KL MINA STAR DD  
KL GRINGO MINA STAR

### 2017 SPRING EPDs (USA)

	GROWTH AND MATERNAL							CARCASE				INDEXES		
	CED	BW	WW	YW	MK	TM	CEM	CW	REA	MB	FT	\$CEZ	\$BMI	\$F
<b>EPD</b>	<b>15</b>	<b>-1.2</b>	<b>54</b>	<b>47</b>	<b>33</b>	<b>60</b>	<b>12</b>	<b>-6</b>	<b>-0.21</b>	<b>0.40</b>	<b>0.01</b>	55.78	176.86	56.15
+/- Chg	2	0.6	3	5	4		2	10	0.22	0.13	0.02			
ACC	0.84	0.87	0.84	0.84	0.79		0.80	0.59	0.51	0.55	0.52			
% Rank	2	15	40	75	1	1	1	85	90	4	>95	3	1	20



**SBF PERFECT MILLIE 19A ET (CANADA)**



**JSF GAUGE 137W (USA)**

What an opportunity to add outcross new genetics to the Shorthorn breed in Australia. Perfect Millie is considered to be the No. 1 female in the Shadybrook herd. She is out of a ripper Donor who has done it all for Shadybrook. This is what Luke Bowman has to say about Gauge, the joining Sire . . .

*JSF Gauge 137W has returned many of the much needed traditional traits back to the American Shorthorn population. Being a proven Trait Leader for both Calving Ease Direct and Calving Ease Maternal, tell us he makes calving a breeze. The cattle are extremely gentle, and have an incredible ability to succeed on various forages in extreme climates to consistently produce the optimum sized cow. On the terminal side of things, he is rare air as being the #1 Proven Trait Leader for Marbling and still rank as #4 for Eye Muscle Area; that is unheard of in any breed! Select Sires made the mistake of retiring the bull before getting collected for Australia. We still use the bull quite heavily in our herd at Bowman Superior Genetics. This offering is one of a kind for the forward thinking investor.*

Purchaser: ..... \$ .....



# LOT 5 SELLING 2 FROZEN EMBRYOS

DELIVERY HOLBROOK BREEDERS . . . Selling on a per embryo basis.

DONOR: THE GROVE PRIMROSE A742 (P) (ET) (AI) X SIRE: THE GROVE KOOKABURRA W735 (P) (ET) (AI)

## DONOR: THE GROVE PRIMROSE A742 (P) (ET) (AI)

DOB: 01/09/2005

Colour: Red

Ident No.: BDBA742

JG RED CLOUD (IMP USA) (P) Red  
EDEN PARK RED EAGLE U002 (P) (ET) (AI) Red

SPRYS STARS AND STRIPES 6TH (P) (ET) (AI) Red Little White  
EVILO SUPER STAR L32 (P) (AI) Red  
EVILO BLUE BELL 6TH (P) Red Little White

THE GROVE UNA 15TH (P) (AI) Red Little White

Sire: THE GROVE KASPROWICZ W791 (P) Red

Dam: THE GROVE PRIMROSE R202 (P) Red

SPRYS INSTANT POWERHOUSE 3RD (H) (ET) (AI) Red  
THE GROVE DALE 39TH (P) Red  
THE GROVE DALE 11TH (P) Red

MOOMBI DOMINO 13TH (P) Roan  
THE GROVE PRIMROSE 18TH (P) Red  
THE GROVE PRIMROSE 8TH (P) Red

### February 2017 Shorthorn GROUP BREEDPLAN

	Calving Ease DIR (%)	Calving Ease DTRS (%)	Gestation Length (days)	Birth Wt. (kg)	200 Day Wt. (kg)	400 Day Wt. (kg)	600 Day Wt. (kg)	Mat. Cow Wt. (kg)	Milk (kg)	Scrotal Size (cm)	Days to Calving (days)	Carcase Wt. (kg)	Eye Muscle Area (sq.cm)	Rib Fat (mm)	Rump Fat (mm)	Retail Beef Yield (%)	IMF (%)	Dom. Mat. Index (\$)	Export Mat. Index (\$)	Nth Mat. Index (\$)
<b>EBV</b>	<b>+8.0</b>	<b>+0.7</b>	<b>-3.7</b>	<b>+2.0</b>	<b>+25</b>	<b>+35</b>	<b>+54</b>	<b>+34</b>	<b>+6</b>	<b>+0.6</b>	<b>+0.4</b>	<b>+38</b>	<b>+4.4</b>	<b>+0.1</b>	<b>+0.4</b>	<b>+0.9</b>	<b>+0.4</b>	<b>+\$36</b>	<b>+\$41</b>	<b>+\$51</b>
ACC	64%	55%	70%	84%	81%	80%	81%	73%	62%	74%	54%	69%	68%	70%	761%	65%	61%			

Traits Observed: 200WT

## SIRE: THE GROVE KOOKABURRA W735 (P) (ET) (AI)

DOB: 26/08/2001

Colour: Red

Ident No.: BDBW735

GAFA MOCHICAN (P) Red  
EIONMOR MR GUS 85C (P) Red  
EIONMOR KNIGHT RUBY 96R (P) Roan

GR COMBO (P) Red Little White  
BLUE RIDGE TRITAN 76B (IMP CAN) (P) Roan  
WINALOT LAURA'S TRIUMPH (H) White

Sire: DEERHORN CRUICKSHANK 946 (IMP USA) (P) Red

Dam: THE GROVE BLUE DALE 2ND (P) (ET) (AI) Roan

HOMEDALE FLASH (P) Red & White  
DEERHORN 75 LADY 319 (P) Red  
LONEDALE LADY 75TH (P) Roan

SPRYS INSTANT POWERHOUSE 3RD (H) (ET) (AI) Red  
THE GROVE DALE 39TH (P) Red  
THE GROVE DALE 11TH (P) Red

### February 2017 Shorthorn GROUP BREEDPLAN

	Calving Ease DIR (%)	Calving Ease DTRS (%)	Gestation Length (days)	Birth Wt. (kg)	200 Day Wt. (kg)	400 Day Wt. (kg)	600 Day Wt. (kg)	Mat. Cow Wt. (kg)	Milk (kg)	Scrotal Size (cm)	Days to Calving (days)	Carcase Wt. (kg)	Eye Muscle Area (sq.cm)	Rib Fat (mm)	Rump Fat (mm)	Retail Beef Yield (%)	IMF (%)	Dom. Mat. Index (\$)	Export Mat. Index (\$)	Nth Mat. Index (\$)
<b>EBV</b>	<b>+10.9</b>	<b>+6.0</b>	<b>-3.5</b>	<b>+1.0</b>	<b>+29</b>	<b>+40</b>	<b>+42</b>	<b>+43</b>	<b>+10</b>	<b>+0.9</b>	<b>-3.2</b>	<b>+42</b>	<b>+7.5</b>	<b>+0.3</b>	<b>+0.7</b>	<b>+1.6</b>	<b>+0.8</b>	<b>+\$56</b>	<b>+\$57</b>	<b>+\$58</b>
ACC	93%	87%	96%	98%	97%	97%	97%	94%	93%	96%	80%	90%	90%	91%	91%	88%	84%			

Traits Observed: 200WT, 400WT, 600WT, SS, FAT, EMA, IMF

What an opportunity to purchase Embryos from one of the best breeding Donors in Australia who just keeps breeding great progeny. Sons have sold to \$35,000, Sprys Junction, other great bulls Sprys TLC Canyon C056 sire of Lot 8 (Reference sire), Sprys Primrose Buddy J17 who you are going to hear a lot more of. Lot 9 is out of a daughter of Primrose A742.

Primrose is 11 years old and still as sound as you can make her. We believe Primrose A742 is Homozygous polled.

What an exciting joining of Primrose A742 and Kookaburra W735. The results could be your next Donor or Stud Sire.

Both Sire and Dam have been exceptional breeding animals and both are proven, so you are certainly taking the guess work out of it all. Crunch the numbers and they are just what you need.



DONOR - THE GROVE PRIMROSE A742

Purchaser: ..... \$ .....





# LOT 6 SELLING 3 FROZEN EMBRYOS

DELIVERY HOLBROOK BREEDERS . . . Selling on a per embryo basis.

DONOR: THE GROVE PRIMROSE A742 (P) (ET) (AI) X SIRE: ELOORA BAKER G31 (P) (AI)

## DONOR: THE GROVE PRIMROSE A742 (P) (ET) (AI)

DOB: 01/09/2005

Colour: Red

Ident No.: BDBA742

JG RED CLOUD (IMP USA) (P) Red  
EDEN PARK RED EAGLE U002 (P) (ET) (AI) Red

SPRYS STARS AND STRIPES 6TH (P) (ET) (AI) Red Little White  
EVILO SUPER STAR L32 (P) (AI) Red  
EVILO BLUE BELL 6TH (P) Red Little White

THE GROVE UNA 15TH (P) (AI) Red Little White

Sire: THE GROVE KASPROWICZ W791 (P) Red

Dam: THE GROVE PRIMROSE R202 (P) Red

SPRYS INSTANT POWERHOUSE 3RD (H) (ET) (AI) Red  
THE GROVE DALE 39TH (P) Red  
THE GROVE DALE 11TH (P) Red

MOOMBI DOMINO 13TH (P) Roan  
THE GROVE PRIMROSE 18TH (P) Red  
THE GROVE PRIMROSE 8TH (P) Red

### February 2017 Shorthorn GROUP BREEDPLAN

	Calving Ease DIR (%)	Calving Ease DTRS (%)	Gestation Length (days)	Birth Wt. (kg)	200 Day Wt. (kg)	400 Day Wt. (kg)	600 Day Wt. (kg)	Mat. Cow Wt. (kg)	Milk (kg)	Scrotal Size (cm)	Days to Calving (days)	Carcass Wt. (kg)	Eye Muscle Area (sq.cm)	Rib Fat (mm)	Rump Fat (mm)	Retail Beef Yield (%)	IMF (%)	Dom. Mat. Index (\$)	Export Mat. Index (\$)	Nth Mat. Index (\$)
<b>EBV</b>	<b>+8.0</b>	<b>+0.7</b>	<b>-3.7</b>	<b>+2.0</b>	<b>+25</b>	<b>+35</b>	<b>+54</b>	<b>+34</b>	<b>+6</b>	<b>+0.6</b>	<b>+0.4</b>	<b>+38</b>	<b>+4.4</b>	<b>+0.1</b>	<b>+0.4</b>	<b>+0.9</b>	<b>+0.4</b>	<b>+\$36</b>	<b>+\$41</b>	<b>+\$51</b>
ACC	64%	55%	70%	84%	81%	80%	81%	73%	62%	74%	54%	69%	68%	70%	76%	65%	61%			

Traits Observed: 200WT

## SIRE: ELOORA BAKER G31 (P) (AI)

DOB: 16/03/2011

Colour: Roan

Ident No.: SBEG31

WEEBOLLABOLLA QUILPIE Q18 (P) Roan  
WEEBOLLABOLLA THEODORE T85 (P) Roan  
WEEBOLLABOLLA NINDETHANA (P) (AI) Red

SUTHERLAND BUNDABERG (IMP USA) (P) (ET) Red Little White  
MARELLAN EMERALD (P) (AI) Red and White  
MARELLAN SUSAN 66TH (P) Red

Sire: MARELLAN INDESTRUCTABLE (P) Roan

Dam: ELOORA ARRAS D18 (P) (AI) Roan

WEEBOLLABOLLA QUASIMOTO Q4 (P) Roan  
MARELLAN AUGUSTA 2100 (P) Roan  
MARELLAN AUGUSTA 0286 (P) White

NARRALDA LEGENDS ENDEAVOUR X37 (P) (AI) Roan  
ELOORA ARRAS A38 (P) (AI) Roan  
ELOORA MISS JACKPOT 3RD V28 (P) (AI) Roan

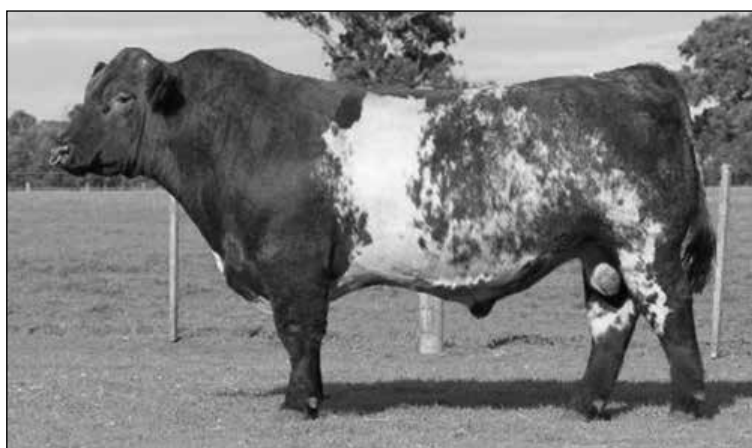
### February 2017 Shorthorn GROUP BREEDPLAN

	Calving Ease DIR (%)	Calving Ease DTRS (%)	Gestation Length (days)	Birth Wt. (kg)	200 Day Wt. (kg)	400 Day Wt. (kg)	600 Day Wt. (kg)	Mat. Cow Wt. (kg)	Milk (kg)	Scrotal Size (cm)	Days to Calving (days)	Carcass Wt. (kg)	Eye Muscle Area (sq.cm)	Rib Fat (mm)	Rump Fat (mm)	Retail Beef Yield (%)	IMF (%)	Dom. Mat. Index (\$)	Export Mat. Index (\$)	Nth Mat. Index (\$)
<b>EBV</b>	<b>+4.5</b>	<b>+4.1</b>	<b>-3.0</b>	<b>+1.3</b>	<b>+26</b>	<b>+31</b>	<b>+46</b>	<b>+32</b>	<b>+9</b>	<b>+2.2</b>	<b>-6.8</b>	<b>+27</b>	<b>+2.7</b>	<b>+1.8</b>	<b>+4.0</b>	<b>-1.0</b>	<b>+0.9</b>	<b>+\$47</b>	<b>+\$45</b>	<b>+\$58</b>
ACC	65%	50%	85%	93%	87%	86%	89%	75%	54%	81%	57%	72%	73%	77%	76%	70%	63%			

Traits Observed: BWT, 200WT, 400WT, 600WT, SS, FAT, EMA, IMF

What an opportunity to purchase Embryos from one of the best breeding Donors in Australia who just keeps breeding great progeny. Sons have sold to \$35,000, Sprys Junction, other great bulls Sprys TLC Canyon C056 sire of Lot 8 (Reference sire), Sprys Primrose Buddy J17 who you are going to hear a lot more of. Lot 9 is out of a daughter of Primrose A742.

Primrose is 11 years old and still as sound as you can make her. We believe Primrose A742 is Homozygous polled. Her Embryo joining Sire, Eloora Baker G31 who has bred the house down for the Brook family. We believe this is an exciting joining. Crunch the numbers of this joining and you will see the potential.



SIRE - ELOORA BAKER G31

Purchaser: ..... \$ .....

# LOT 7 SELLING 4 FROZEN EMBRYOS

DELIVERY HOLBROOK BREEDERS . . . Selling on a per embryo basis.

A/c: Cooper Carter

DONOR: SPRYS GOLD'S ELLE F444 (P) (AI) X SIRE: CROOKED POST STOCKMAN 4Z (P)

## DONOR: SPRYS GOLD'S ELLE F444 (P) (AI)

DOB: 08/08/2010

Colour: Roan

Ident No.: GLSF444

SOUTHCOTE VOODOO V35 (P) (AI) Red

ERAMBIE ZULU S20 (P) Roan

SPRYS AUSSIE GOLD B086 (P) Red Little White

ERAMBIE ZOO V33 (P) Roan

SPRYS ZAMS CARNATION Y050 (P) (ET) (AI) Roan

ERAMBIE MAYFLOWER 239 (P) Roan

Sire: SPRYS ALL GOLD D052 (P) Roan

Dam: C444 (P) (SFA) Red Little White

SPRYS ONLY A LEGEND W026 (P) (ET) (AI) Roan

NEEARRA JUDITH 104 (P) Roan

NEEARRA JUDITH 67 (P) (AI) Red

### February 2017 Shorthorn GROUP BREEDPLAN

	Calving Ease DIR (%)	Calving Ease DTRS (%)	Gestation Length (days)	Birth Wt. (kg)	200 Day Wt. (kg)	400 Day Wt. (kg)	600 Day Wt. (kg)	Mat. Cow Wt. (kg)	Milk (kg)	Scrotal Size (cm)	Days to Calving (days)	Carcase Wt. (kg)	Eye Muscle Area (sq.cm)	Rib Fat (mm)	Rump Fat (mm)	Retail Beef Yield (%)	IMF (%)
<b>EBV</b>	<b>-1.7</b>	<b>-5.4</b>	<b>0.0</b>	<b>+1.7</b>	<b>+23</b>	<b>+23</b>	<b>+34</b>	<b>+23</b>	<b>+9</b>	<b>+0.8</b>	<b>-0.7</b>	<b>+22</b>	<b>+0.2</b>	<b>-0.1</b>	<b>+0.7</b>	<b>-0.2</b>	<b>+0.5</b>
ACC	47%	43%	65%	67%	67%	70%	67%	62%	57%	55%	42%	58%	60%	66%	66%	59%	54%

Traits Observed: GL, 400WT, FAT, EMA, IMF

## SIRE: CROOKED POST STOCKMAN 4Z (P)

DOB: 10/02/2012

Colour: Red

Ident No.: MCAN476682

DEER TRAIL BUCKSHOT 5073 (P) Red

BYLAND GOLD SPEAR (P) Red Little White

SHADYBROOK SCOTTY 83K (IMP CAN) (P) Red Little White

WAUKARU GOLDMINE 2109 (IMP USA) (P) Red

MISS SCARLET 10W (P) Red Little White

WAUKARU MELITA ROSE 0144 (P) Red

Sire: BELMORE JACKAROO Z109 (P) (AI) Red

Dam: CROOKED POST RED ROSE 4U (P) Red

BELMORE WASHINGTON N6 (P) (AI) Red

C P BOSTON BODACIOUS 12H (IMP CAN) (P) Red

TREVINO ACTRESS 104TH (P) (AI) Red

CROOKED POST RED ROSE 48S (P) Red

TREVINO ACTRESS 97TH (P) (AI) Red

DOWNSVIEW RED ROSE 13E (P) Red

### February 2017 Shorthorn GROUP BREEDPLAN

	Calving Ease DIR (%)	Calving Ease DTRS (%)	Gestation Length (days)	Birth Wt. (kg)	200 Day Wt. (kg)	400 Day Wt. (kg)	600 Day Wt. (kg)	Mat. Cow Wt. (kg)	Milk (kg)	Scrotal Size (cm)	Days to Calving (days)	Carcase Wt. (kg)	Eye Muscle Area (sq.cm)	Rib Fat (mm)	Rump Fat (mm)	Retail Beef Yield (%)	IMF (%)
<b>EBV</b>	<b>+3.2</b>	<b>-2.1</b>	<b>-1.8</b>	<b>+2.6</b>	<b>+32</b>	<b>+43</b>	<b>+57</b>	<b>+33</b>	<b>+8</b>	<b>+0.2</b>	<b>+3.1</b>	<b>+40</b>	<b>+7.8</b>	<b>-0.8</b>	<b>-1.7</b>	<b>+2.9</b>	<b>+0.6</b>
ACC	51%	47%	54%	55%	54%	55%	55%	52%	51%	53%	42%	50%	50%	51%	51%	48%	45%

Traits Observed:



SPRYS GOLD'S ELLE F444 (P)



CROOKED POST STOCKMAN 4Z (P)

This is an outstanding opportunity to purchase a genetic package in Crooked Post Stockman 4Z, a new Canadian sire to Australia. Stockman is a multi-trait leader in both Canada & America. Stockman is being used all around the world and producing exceptional progeny. Be one of the first to have Stockman calves on the ground in Australia.

Sprys Gold's Elle F444 was the Supreme Shorthorn at Sydney Royal 2015. She has an exceptional udder, is long and deep bodied with a great temperament. Stockman combined with the power and performance of Sprys Gold's Elle F444 is sure to be an outstanding combination.

For further information please contact Steve (Stumpy) Carter on 0427 354 714.

Purchaser: ..... \$ .....

# SHORTHORN BULLS

**LOT 8**

**OUTBACK SPRYS GRAND CANYON M254 (P) (ET) (AI)**

**DOB:** 07/02/2016

**Colour:** Red

**Ident No.:** OB M254

BYLAND LEGACY SRD15 ET (H) Red  
 JR LEGEND 78H (IMP USA) (P) Red  
 JR FANCY LADY 96E (P) Red Little White  
**Sire: SPRYS TLC CANYON C056 (P) (AI) Red**  
 THE GROVE KASPROWICZ W791 (P) Red  
 THE GROVE PRIMROSE A742 (P) (ET) (AI) Red  
 THE GROVE PRIMROSE R202 (P) Red

BROUGHTON PARK CANADIAN CHIEF (P) (ET) (AI) Roan  
 BUNDALEER UNITED CHIEF U21 (P) Red Little White  
 BROUGHTON PARK ROSE 58 (P) Red  
**Dam: OUTBACK MONA Z914 (P) (ET) Red Little White**  
 ADAIR EDINBURGH Q63 (P) Roan  
 ADAIR DESDEMONA U98 (P) Red Little White  
 ADAIR DESDEMONA M187 (P) Roan

MEASUREMENTS	
Scrotal Size	
Weight	

**February 2017 Shorthorn GROUP BREEDPLAN**

	Calving Ease DIR (%)	Calving Ease DTRS (%)	Gestation Length (days)	Birth Wt. (kg)	200 Day Wt. (kg)	400 Day Wt. (kg)	600 Day Wt. (kg)	Mat. Cow Wt. (kg)	Milk (kg)	Scrotal Size (cm)	Days to Calving (days)	Carcase Wt. (kg)	Eye Muscle Area (sq.cm)	Rib Fat (mm)	Rump Fat (mm)	Retail Beef Yield (%)	IMF (%)	Dom. Mat. Index (\$)	Export Mat. Index (\$)	Nth Mat. Index (\$)
<b>EBV</b>	<b>+6.9</b>	<b>+3.6</b>	<b>-0.9</b>	<b>+3.7</b>	<b>+38</b>	<b>+61</b>	<b>+79</b>	<b>+50</b>	<b>+7</b>	<b>+3.2</b>	<b>-3.3</b>	<b>+50</b>	<b>+4.7</b>	<b>-0.1</b>	<b>-0.7</b>	<b>+0.9</b>	<b>+0.7</b>	<b>+\$57</b>	<b>+\$57</b>	<b>+\$71</b>
ACC	46%	40%	49%	72%	66%	69%	64%	57%	45%	69%	44%	53%	57%	62%	62%	57%	48%			

*Traits Observed:* BWT, 400WT, SS, FAT, EMA, IMF

**Selling Full Possession and 100% Semen Marketing (Stud Sire). A rare opportunity to purchase a top sire.**

This young bull is really impressive in EBV's and phenotype. He really puts it all together in one package.

Retaining the right to collect 200 straws semen for use in Sprys & Outback herds only. (Will be collected prior to leaving Ardlui).

**Top 1% Export Maternal, 400, Scrotal & Carcase wt. Top 5% Domestic Maternal, Nthn Maternal, 200, 600 wt. Top 10% Calving Ease direct, days to calving & IMF. Top 20% Calving Ease daughters & Milk.**

Purchaser: ..... \$ .....

**LOT 9**

**SPRYS PRIMROSES BALANCE L41 (P)**

**DOB:** 03/07/2015

**Colour:** Roan

**Ident No.:** GLSL41

COOLONG XS574 (P) (SFA) Red Little White  
 GLENELL IMF B90 (P) Red  
 GLENELL X154 (P) (SFA)  
**Sire: OUTBACK SPRYS BALANCE G266 (P) (ET) (AI) Red**  
 SPRYS RED URANUS V112 (H) (AI) Red  
 SCHULLER RED KATE C1 (P) (TWIN) (AI) Red  
 SPRYS LEGENDS KATE Y031 (P) (ET) (AI) Red

BYLAND GOLD SPEAR (P) Red Little White  
 RED ROSE GOLD SPEAR RUFFIAN (IMP CAN) (P) Roan  
 RED ROSE GUS ROAN LADY 6J (P) Roan  
**Dam: SPRYS RUFFIANS PRIMROSE J37 (P) (ET) (AI) Roan**  
 THE GROVE KASPROWICZ W791 (P) Red  
 THE GROVE PRIMROSE A742 (P) (ET) (AI) Red  
 THE GROVE PRIMROSE R202 (P) Red

MEASUREMENTS	
Scrotal Size	
Weight	

**February 2017 Shorthorn GROUP BREEDPLAN**

	Calving Ease DIR (%)	Calving Ease DTRS (%)	Gestation Length (days)	Birth Wt. (kg)	200 Day Wt. (kg)	400 Day Wt. (kg)	600 Day Wt. (kg)	Mat. Cow Wt. (kg)	Milk (kg)	Scrotal Size (cm)	Days to Calving (days)	Carcase Wt. (kg)	Eye Muscle Area (sq.cm)	Rib Fat (mm)	Rump Fat (mm)	Retail Beef Yield (%)	IMF (%)	Dom. Mat. Index (\$)	Export Mat. Index (\$)	Nth Mat. Index (\$)
<b>EBV</b>	<b>+1.0</b>	<b>+1.0</b>	<b>+0.3</b>	<b>+3.2</b>	<b>+33</b>	<b>+52</b>	<b>+64</b>	<b>+44</b>	<b>+5</b>	<b>+1.1</b>	<b>+1.1</b>	<b>+42</b>	<b>+3.5</b>	<b>+0.7</b>	<b>+1.6</b>	<b>+0.2</b>	<b>+0.6</b>	<b>+\$39</b>	<b>+\$36</b>	<b>+\$51</b>
ACC	46%	39%	52%	73%	69%	67%	72%	60%	40%	70%	43%	55%	55%	61%	61%	55%	46%			

*Traits Observed:* CE, BWT, 200WT, 600WT, SS, FAT, EMA, IMF

**Tested Homozygous Polled. Stud Sire Potential.**

Out of a 1st calver. Used at Sprys to cover cows after AI in 2016. We are impressed with the overall balance of EBV's, phenotype and temperament. You should have a good look at this Sire, we think he could have a big future. Out of the flush sister to the excellent sire Sprys Primroses Buddy J17, son of The Grove Primrose A742.

**Top 5% 400. Top 10% 200, Rib fat, Rump fat. Top 15% 600 & Nthn Maternal. Top 20% Domestic. Top 25% IMF.**

Purchaser: ..... \$ .....

**LOT 10**

**OUTBACK SPRYS SOLID L277 (P)**

**DOB:** 18/08/2015

**Colour:** Red

**Ident No.:** OB L277

WAUKARU GOLD CARD 5042 (IMP USA) (P) Red  
 WAUKARU PATENT 8161 (IMP USA) (P) (ET) Red  
 WAUKARU 12H MELITA ROSE 5021 (H) Red  
**Sire: SPRYS ROCK SOLID H5 (P) (ET) (AI) Red**  
 EDEN PARK STOCKMAN (P) (AI) Red  
 SCHULLER ANN B47 (P) Red  
 CHADWICK R127 (H) (SFA) Roan

SPRYS TRUE BLUE Y033 (P) (ET) (AI) Red  
 SPENCER FAMILY AUSSIE BLUE (P) Red  
 SPRYS AWESOME PATSY X103 (P) Roan  
**Dam: OUTBACK GAIL D57 (P) Roan**  
 OUTBACK GAIL FX201 (P) (SFA) Roan

MEASUREMENTS	
Scrotal Size	
Weight	

**February 2017 Shorthorn GROUP BREEDPLAN**

	Calving Ease DIR (%)	Calving Ease DTRS (%)	Gestation Length (days)	Birth Wt. (kg)	200 Day Wt. (kg)	400 Day Wt. (kg)	600 Day Wt. (kg)	Mat. Cow Wt. (kg)	Milk (kg)	Scrotal Size (cm)	Days to Calving (days)	Carcase Wt. (kg)	Eye Muscle Area (sq.cm)	Rib Fat (mm)	Rump Fat (mm)	Retail Beef Yield (%)	IMF (%)	Dom. Mat. Index (\$)	Export Mat. Index (\$)	Nth Mat. Index (\$)
<b>EBV</b>	<b>-3.3</b>	<b>+0.1</b>	<b>-0.7</b>	<b>+2.6</b>	<b>+31</b>	<b>+42</b>	<b>+54</b>	<b>+28</b>	<b>+5</b>	<b>+1.5</b>	<b>+2.6</b>	<b>+43</b>	<b>+8.2</b>	<b>-0.6</b>	<b>-2.2</b>	<b>+2.8</b>	<b>+0.6</b>	<b>+\$28</b>	<b>+\$39</b>	<b>+\$36</b>
ACC	39%	30%	42%	72%	67%	70%	64%	56%	38%	70%	40%	50%	53%	60%	60%	53%	43%			

*Traits Observed:* BWT, 200WT, 400WT, SS, FAT, EMA, IMF

Moderate birth and plenty of eye muscle in L277. Rock Solid has bred well balanced progeny with plenty of performance. Really like the Mature cow weight on this young sire below his 200 day weight. Heaviest muscle bull in the catalogue. Can be used as a self replacing herd or Terminal.

**Top 1% for EMA & RBV. Top 5% Carcase wt. Top 20% 200wt.**

Purchaser: ..... \$ .....



# LOT 11 SPRYS COMBO L68 (P) (AI) (MBR)

DOB: 17/07/2015

Colour: Roan

Ident No.: GLSL68

WAUKARU PATENT 8161 (IMP USA) (P) (ET) Red

WAUKARU BRISBANE 4111 (IMP USA) (P) Roan

SPRYS PATENT'S ACE G38 (P) (ET) (AI) Roan

THE GROVE TRANSLATOR W1264 (P) (ET) (AI) Red

NEEARRA JUDITH 104 (P) Roan

THE GROVE C.K. DALE W747 (P) (ET) (AI) Red Little White

Sire: SPRYS JUNCTION (P) (ET) (AI) Roan

Dam: SPRYS H0403 (P) (MBR) Red

THE GROVE KASPROWICZ W791 (P) Red

COOLANA Y279 (P) (MBR) Black

THE GROVE PRIMROSE A742 (P) (ET) (AI) Red

THE GROVE PRIMROSE R202 (P) Red

MEASUREMENTS	
Scrotal Size	
Weight	

## February 2017 Shorthorn GROUP BREEDPLAN

	Calving Ease DIR (%)	Calving Ease DTRS (%)	Gestation Length (days)	Birth Wt. (kg)	200 Day Wt. (kg)	400 Day Wt. (kg)	600 Day Wt. (kg)	Mat. Cow Wt. (kg)	Milk (kg)	Scrotal Size (cm)	Days to Calving (days)	Carcase Wt. (kg)	Eye Muscle Area (sq.cm)	Rib Fat (mm)	Rump Fat (mm)	Retail Beef Yield (%)	IMF (%)	Dom. Mat. Index (\$)	Export Mat. Index (\$)	Nth Mat. Index (\$)
<b>EBV</b>	<b>+2.7</b>	<b>-0.6</b>	<b>-3.7</b>	<b>+1.5</b>	<b>+28</b>	<b>+38</b>	<b>+59</b>	<b>+38</b>	<b>+5</b>	<b>+1.8</b>	<b>-3.5</b>	<b>+39</b>	<b>+4.2</b>	<b>-0.2</b>	<b>+0.2</b>	<b>+1.1</b>	<b>+0.5</b>	<b>+\$39</b>	<b>+\$42</b>	<b>+\$54</b>
ACC	34%	26%	41%	48%	48%	46%	46%	39%	27%	42%	29%	38%	37%	39%	39%	36%	32%			

Traits Observed: CE, BWT, 200WT, 600WT, SS, FAT, EMA, IMF

Tested Homozygous Polled. 75% Shorthorn & 25% Angus (red gene).

What an impressive bull for his overall maturity, balance and do-ability. L68 was our No. 1 scanning bull for IMF. Use him on your Shorthorn cows and sell progeny into JBS Thousand Guineas branded product of the Supermarket trade.

Top 10% for BW & Nthn Maternal. Top 15% Export Maternal. Top 20% for Domestic.

Purchaser: ..... \$ .....

# LOT 12 SPRYS ENIAS SOLUTION L61 (P) (AI)

DOB: 17/07/2015

Colour: Red

Ident No.: GLSL61

GLENELL IMF B90 (P) Red

THE GROVE OSCAR A748 (P) (ET) (AI) Red

SPRYS SOLUTION E006 (P) Red

THE GROVE TIDE-RIP E667 (P) Red Little White

SPRYS AC. ULTIMATE M. NIAM A101 (P) (ET) (AI) Red Little White

THE GROVE RAMONA Z445 (P) Roan

Sire: OUTBACK SPRYS SOLUTION H283 (P) Red

Dam: SPRYS RIP TIDES ENIA H69 (P) (AI) Red

SPRY'S FAIR DINKUM Z027 (P) (ET) (AI) Roan

BYLAND MISSION 6RD112 (IMP USA) (P) Red

OUTBACK DIVA D07 (P) Red

SPRYS LEICA ENIA MISSION A190 (P) (ET) (AI) Red

ERAMBIE POI SONG 48 (P) Roan

SPENCER FAMILY LEICA LEGEND (P) (ET) (AI) Roan

MEASUREMENTS	
Scrotal Size	
Weight	

## February 2017 Shorthorn GROUP BREEDPLAN

	Calving Ease DIR (%)	Calving Ease DTRS (%)	Gestation Length (days)	Birth Wt. (kg)	200 Day Wt. (kg)	400 Day Wt. (kg)	600 Day Wt. (kg)	Mat. Cow Wt. (kg)	Milk (kg)	Scrotal Size (cm)	Days to Calving (days)	Carcase Wt. (kg)	Eye Muscle Area (sq.cm)	Rib Fat (mm)	Rump Fat (mm)	Retail Beef Yield (%)	IMF (%)	Dom. Mat. Index (\$)	Export Mat. Index (\$)	Nth Mat. Index (\$)
<b>EBV</b>	<b>-1.4</b>	<b>+3.5</b>	<b>-0.8</b>	<b>+3.6</b>	<b>+25</b>	<b>+38</b>	<b>+37</b>	<b>+50</b>	<b>+5</b>	<b>+0.7</b>	<b>+0.5</b>	<b>+29</b>	<b>+5.1</b>	<b>-0.4</b>	<b>-0.3</b>	<b>+0.7</b>	<b>+0.8</b>	<b>+\$26</b>	<b>+\$27</b>	<b>+\$25</b>
ACC	35%	28%	66%	70%	66%	64%	71%	56%	37%	69%	40%	52%	52%	60%	60%	54%	43%			

Traits Observed: GL, CE, BWT, 200WT, 600WT, SS, FAT, EMA, IMF

A good, young sire to increase IMF and maintain Yield. Very good carcass data coming back from his sire's progeny. Ideal slick hair type and a fine skin.

Top 5% for IMF. Top 20% for Calving ease daughters. Top 25% for EMA.

Purchaser: ..... \$ .....

# LOT 13 OUTBACK SPRYS JOKER L287 (P)

DOB: 03/09/2015

Colour: Roan

Ident No.: OB L287

WAUKARU PATENT 8161 (IMP USA) (P) (ET) Red

SOUTHCOTE YALE Y157 (P) (AI) Red Little White

SPRYS PATENT'S ACE G38 (P) (ET) (AI) Roan

SPRYS EXCLUSIVE E021 (P) Roan

NEEARRA JUDITH 104 (P) Roan

SPRYS AUGUSTAS BENCHMARK C069 (P) (ET) (AI) Roan

Sire: OUTBACK JOKER J328 (P) (ET) (AI) Roan

Dam: OUTBACK ISABELLA H97 (P) Red Little White

JR LEGEND 78H (IMP USA) (P) Red

THE GROVE CONDRAMINE (P) (ET) (AI) Red

LACHLAN FRANCIS Z024 (P) (TWIN) (ET) (AI) Red Little White

SCHULLER ISABELLA FW204 (P) (SFA) Red

HIGHDENUP FRANCES (P) (AI) Red Little White

MEASUREMENTS	
Scrotal Size	
Weight	

## February 2017 Shorthorn GROUP BREEDPLAN

	Calving Ease DIR (%)	Calving Ease DTRS (%)	Gestation Length (days)	Birth Wt. (kg)	200 Day Wt. (kg)	400 Day Wt. (kg)	600 Day Wt. (kg)	Mat. Cow Wt. (kg)	Milk (kg)	Scrotal Size (cm)	Days to Calving (days)	Carcase Wt. (kg)	Eye Muscle Area (sq.cm)	Rib Fat (mm)	Rump Fat (mm)	Retail Beef Yield (%)	IMF (%)	Dom. Mat. Index (\$)	Export Mat. Index (\$)	Nth Mat. Index (\$)
<b>EBV</b>	<b>-4.4</b>	<b>-1.9</b>	<b>-1.3</b>	<b>+4.1</b>	<b>+31</b>	<b>+42</b>	<b>+59</b>	<b>+50</b>	<b>+7</b>	<b>+1.7</b>	<b>-1.1</b>	<b>+38</b>	<b>+5.3</b>	<b>-1.1</b>	<b>-2.0</b>	<b>+2.0</b>	<b>+0.5</b>	<b>+\$23</b>	<b>+\$29</b>	<b>+\$31</b>
ACC	41%	34%	41%	72%	66%	69%	63%	57%	39%	69%	42%	51%	55%	61%	61%	55%	45%			

Traits Observed: BWT, 200WT, 400WT, SS, FAT, EMA, IMF

Really stout made, well muscled and very correct. His sire, Joker J328, is medium in maturity in a thick B muscle score package and out of the ever reliable Frances female. This bull will increase yield in his progeny.

Top 5% for RBY. Top 20% for 200, Milk & EMA.

Purchaser: ..... \$ .....



# LOT 14 SPRYS INFORMANT L84 (P) (AI)

**DOB:** 24/07/2015 **Colour:** Red Little White **Ident No.:** GLSL84

THE GROVE INFORMANT U255 (P) Red  
THE GROVE INFORMANT Y463 (P) Roan  
THE GROVE U664 (P) (SFA) Roan

WEEBOLLABOLLA THEODORE T85 (P) Roan  
ROYALLA EXTERMINATOR (P) Roan  
ROYALLA ITA 10TH (P) Roan

**Sire:** THE GROVE INFORMANT C938 (P) Red

**Dam:** SPRYS EXT JULIET D058 (P) (AI) Red Little White

WROXMORE WARRIOR (P) Roan  
THE GROVE X171 (P) (SFA) Red Little White  
THE GROVE RC50 (P) (SFA)

SOUTHCOTE VOODOO V35 (P) (AI) Red  
SPRYS VOODOOS JULIET B104 (P) Red  
SPRYS LEGENDS JULIET Y082 (P) (AI) Roan

MEASUREMENTS	
Scrotal Size	
Weight	

## February 2017 Shorthorn GROUP BREEDPLAN

	Calving Ease DIR (%)	Calving Ease DTRS (%)	Gestation Length (days)	Birth Wt. (kg)	200 Day Wt. (kg)	400 Day Wt. (kg)	600 Day Wt. (kg)	Mat. Cow Wt. (kg)	Milk (kg)	Scrotal Size (cm)	Days to Calving (days)	Carcass Wt. (kg)	Eye Muscle Area (sq.cm)	Rib Fat (mm)	Rump Fat (mm)	Retail Beef Yield (%)	IMF (%)	Dom. Mat. Index (\$)	Export Mat. Index (\$)	Nth Mat. Index (\$)
<b>EBV</b>	<b>+3.3</b>	<b>+3.7</b>	<b>-0.8</b>	<b>+3.2</b>	<b>+26</b>	<b>+39</b>	<b>+51</b>	<b>+40</b>	<b>+1</b>	<b>+3.4</b>	<b>-4.7</b>	<b>+33</b>	<b>+4.1</b>	<b>-0.4</b>	<b>-0.4</b>	<b>+0.8</b>	<b>+0.8</b>	<b>+\$41</b>	<b>+\$46</b>	<b>+\$50</b>
ACC	39%	34%	68%	71%	68%	66%	72%	59%	43%	69%	42%	54%	54%	61%	61%	55%	46%			

*Traits Observed:* GL, CE, BWT, 200WT, 600WT, SS, FAT, EMA, IMF

Maternal brother to Lot 2. A slick coated sire with tremendous length and ease of movement and out of a very productive mum who is dam of Lot 2 heifer. By the same sire as The Grove Gigabytes J837, purchased for \$57,500 with Arubial Stud in 2015.

**Top 1% Scrotal. Top 5% Days to calving & IMF. Top 10% Export Maternal. Top 15% Domestic Nthn Maternal. Top 20% Calving ease daughters.**

Purchaser: ..... \$ .....

# LOT 15 SPRYS GOVERNOR L62 (P) (TWIN)

**DOB:** 18/07/2015 **Colour:** Red **Ident No.:** GLSL62

GLENELL IMF B90 (P) Red  
SPRYS IMF'S LEGEND E020 (P) Red Little White  
SPRYS LEGENDS MARGLORY Y069 (P) (ET) (AI) Roan

FUTURITY OUTBACK W1 (P) (ET) (AI) Red  
SPRY'S JSUT RIGHT Z077 (P) (AI) Red  
COONARDOO 964 (P) (SFA) Red

**Sire:** GLENGYRON GOVERNOR (P) Red Little White

**Dam:** SPRYS J. R MAY QUEEN F45 (P) Red

SPRYS PIONEER A201 (P) (ET) (AI) Red Little White  
GLENGYRON ROSE 66 (P) Red Little White  
GLENGYRON ROSE 43RD (P) Red

TREVINO ULTIMATE 2ND (P) Red  
NEEARRA MAY QUEEN C24 (P) (AI) Roan  
NEEARRA MAY QUEEN 15 (P) Roan

MEASUREMENTS	
Scrotal Size	
Weight	

## February 2017 Shorthorn GROUP BREEDPLAN

	Calving Ease DIR (%)	Calving Ease DTRS (%)	Gestation Length (days)	Birth Wt. (kg)	200 Day Wt. (kg)	400 Day Wt. (kg)	600 Day Wt. (kg)	Mat. Cow Wt. (kg)	Milk (kg)	Scrotal Size (cm)	Days to Calving (days)	Carcass Wt. (kg)	Eye Muscle Area (sq.cm)	Rib Fat (mm)	Rump Fat (mm)	Retail Beef Yield (%)	IMF (%)	Dom. Mat. Index (\$)	Export Mat. Index (\$)	Nth Mat. Index (\$)
<b>EBV</b>	<b>+2.0</b>	<b>+1.3</b>	<b>-1.3</b>	<b>+2.5</b>	<b>+26</b>	<b>+38</b>	<b>+49</b>	<b>+36</b>	<b>+4</b>	<b>+1.1</b>	<b>-0.6</b>	<b>+33</b>	<b>+4.8</b>	<b>-0.7</b>	<b>-1.5</b>	<b>+1.5</b>	<b>+0.7</b>	<b>+\$33</b>	<b>+\$40</b>	<b>+\$41</b>
ACC	37%	29%	44%	61%	62%	60%	65%	52%	35%	62%	35%	50%	49%	56%	56%	50%	41%			

*Traits Observed:* 200WT, 600WT, SS, FAT, EMA, IMF

A very good solid red with plenty of natural thickness and below average for BW. Full brother to L63 (Lot 51), from a very productive mum with low BW.

**Top 20% for Export Maternal.**

Purchaser: ..... \$ .....

# LOT 16 OUTBACK SPRYS SOLID L285 (P)

**DOB:** 23/08/2015 **Colour:** Red Little White **Ident No.:** OB L285

WAUKARU GOLD CARD 5042 (IMP USA) (P) Red  
WAUKARU PATENT 8161 (IMP USA) (P) (ET) Red  
WAUKARU 12H MELITA ROSE 5021 (H) Red

JR LEGEND 78H (IMP USA) (P) Red  
SPRY'S FAIR DINKUM Z027 (P) (ET) (AI) Roan  
MOOMBI KATE S50 (P) Roan

**Sire:** SPRYS ROCK SOLID H5 (P) (ET) (AI) Red

**Dam:** OUTBACK DIVA D07 (P) Red

EDEN PARK STOCKMAN (P) (AI) Red  
SCHULLER ANN B47 (P) Red  
CHADWICK R127 (H) (SFA) Roan

LONE PINE RICHMOND Q18 (P) Roan  
ERAMBIE POI SONG 48 (P) Roan  
ERAMBIE POI SONG 37 (P) Red

MEASUREMENTS	
Scrotal Size	
Weight	

## February 2017 Shorthorn GROUP BREEDPLAN

	Calving Ease DIR (%)	Calving Ease DTRS (%)	Gestation Length (days)	Birth Wt. (kg)	200 Day Wt. (kg)	400 Day Wt. (kg)	600 Day Wt. (kg)	Mat. Cow Wt. (kg)	Milk (kg)	Scrotal Size (cm)	Days to Calving (days)	Carcass Wt. (kg)	Eye Muscle Area (sq.cm)	Rib Fat (mm)	Rump Fat (mm)	Retail Beef Yield (%)	IMF (%)	Dom. Mat. Index (\$)	Export Mat. Index (\$)	Nth Mat. Index (\$)
<b>EBV</b>	<b>-0.5</b>	<b>+1.6</b>	<b>-1.4</b>	<b>+3.3</b>	<b>+35</b>	<b>+54</b>	<b>+64</b>	<b>+53</b>	<b>+8</b>	<b>+0.9</b>	<b>+1.0</b>	<b>+44</b>	<b>+6.5</b>	<b>-1.1</b>	<b>-2.6</b>	<b>+1.9</b>	<b>+0.4</b>	<b>+\$35</b>	<b>+\$35</b>	<b>+\$43</b>
ACC	42%	33%	43%	73%	68%	70%	65%	57%	40%	70%	41%	52%	55%	61%	61%	54%	45%			

*Traits Observed:* BWT, 200WT, 400WT, SS, FAT, EMA, IMF

A great balance of performance and function in L285. Look at the tremendous carcass shape and expression of muscle in this great young sire. Could be used as a self replacing or Terminal. Take a look at the big back and butt on this young sire B muscle.

**Top 5% for 200, 400 wt. Top 10% for EMA & RBV. Top 15% for 600 wt.**

Purchaser: ..... \$ .....



# LOT 17 SPRYS LEGENDS SOLUTION L74 (P) (AI)

**DOB:** 20/07/2015 **Colour:** Roan **Ident No.:** GLSL74

GLENELL IMF B90 (P) Red  
 SPRYS SOLUTION E006 (P) Red  
 SPRYS AC. ULTIMATE M. NIAM A101 (P) (ET) (AI) Red Little White  
**Sire: OUTBACK SPRYS SOLUTION H283 (P) Red**  
 SPRY'S FAIR DINKUM Z027 (P) (ET) (AI) Roan  
 OUTBACK DIVA D07 (P) Red  
 ERAMBIE POI SONG 48 (P) Roan

BYLAND LEGACY SRD15 ET (H) Red  
 JR LEGEND 78H (IMP USA) (P) Red  
 JR FANCY LADY 96E (P) Red Little White  
**Dam: SPRYS LEGENDS CHERRY G141 (P) (AI) Roan**  
 LONE PINE SENSATION Y36 (S) (AI) Roan  
 LONE PINE CHERRY A064 (P) Roan  
 LONE PINE CHERRY X72 (P) Roan

MEASUREMENTS	
Scrotal Size	
Weight	

## February 2017 Shorthorn GROUP BREEDPLAN

	Calving Ease DIR (%)	Calving Ease DTRS (%)	Gestation Length (days)	Birth Wt. (kg)	200 Day Wt. (kg)	400 Day Wt. (kg)	600 Day Wt. (kg)	Mat. Cow Wt. (kg)	Milk (kg)	Scrotal Size (cm)	Days to Calving (days)	Carcase Wt. (kg)	Eye Muscle Area (sq.cm)	Rib Fat (mm)	Rump Fat (mm)	Retail Beef Yield (%)	IMF (%)	Dom. Mat. Index (\$)	Export Mat. Index (\$)	Nth Mat. Index (\$)
<b>EBV</b>	<b>+3.9</b>	<b>+3.7</b>	<b>-1.3</b>	<b>+2.7</b>	<b>+27</b>	<b>+39</b>	<b>+47</b>	<b>+48</b>	<b>+4</b>	<b>+1.8</b>	<b>-3.4</b>	<b>+32</b>	<b>+3.8</b>	<b>+0.4</b>	<b>+1.1</b>	<b>-0.1</b>	<b>+1.1</b>	<b>+\$42</b>	<b>+\$44</b>	<b>+\$48</b>
ACC	40%	35%	67%	62%	66%	64%	70%	57%	42%	69%	42%	54%	54%	61%	61%	55%	46%			

*Traits Observed:* GL, CE, 200WT, 600WT, SS, FAT, EMA, IMF

A great balance of EBV's. Low birth, big Scrotal and positive fats with outstanding IMF. Sire sold to Adrian Goode SA with excellent progeny carcass data (grass reared). Impressive bull for a self-replacing herd to supply progeny into the JBS Thousand Guineas branded product.

**Top 1% for IMF. Top 10% for days to calving & Domestic Export Maternal. Top 15% for Rib & Rump fat. Top 20% Calving ease daughters & Nthn Export.**

Purchaser: ..... \$ .....

# LOT 18 OUTBACK SPRYS EXCLUSIVE L284 (P)

**DOB:** 22/08/2015 **Colour:** Roan **Ident No.:** OB L284

ROYALLA EXTERMINATOR (P) Roan  
 SOUTHCOOTE YALE Y157 (P) (AI) Red Little White  
 SOUTHCOOTE RUPERTA W1 (P) Red Little White  
**Sire: SPRYS EXCLUSIVE E021 (P) Roan**  
 THE GROVE BENCHMARK Y931 (P) Red  
 SPRYS AUGUSTAS BENCHMARK C069 (P) (ET) (AI) Roan  
 SPRYS BRAGS AUGUSTA M150 (H) White

GLENELL IMF B90 (P) Red  
 SPRYS SOLUTION E006 (P) Red  
 SPRYS AC. ULTIMATE M. NIAM A101 (P) (ET) (AI) Red Little White  
**Dam: OUTBACK VICTORIA G174 (P) Red**  
 YARRAM ULTRABRIGHT (P) Roan  
 SCHULLER VICTORIA FX25 (P) (SFA) Red

MEASUREMENTS	
Scrotal Size	
Weight	

## February 2017 Shorthorn GROUP BREEDPLAN

	Calving Ease DIR (%)	Calving Ease DTRS (%)	Gestation Length (days)	Birth Wt. (kg)	200 Day Wt. (kg)	400 Day Wt. (kg)	600 Day Wt. (kg)	Mat. Cow Wt. (kg)	Milk (kg)	Scrotal Size (cm)	Days to Calving (days)	Carcase Wt. (kg)	Eye Muscle Area (sq.cm)	Rib Fat (mm)	Rump Fat (mm)	Retail Beef Yield (%)	IMF (%)	Dom. Mat. Index (\$)	Export Mat. Index (\$)	Nth Mat. Index (\$)
<b>EBV</b>	<b>+1.2</b>	<b>+2.3</b>	<b>+0.8</b>	<b>+2.4</b>	<b>+22</b>	<b>+33</b>	<b>+36</b>	<b>+40</b>	<b>+6</b>	<b>+0.6</b>	<b>+0.8</b>	<b>+28</b>	<b>+2.1</b>	<b>-0.3</b>	<b>0.0</b>	<b>+0.6</b>	<b>+0.6</b>	<b>+\$26</b>	<b>+\$26</b>	<b>+\$28</b>
ACC	46%	38%	52%	73%	68%	71%	66%	61%	47%	71%	43%	54%	58%	64%	64%	58%	48%			

*Traits Observed:* BWT, 200WT, 400WT, SS, FAT, EMA, IMF

An eye-catching young sire with overall balance of phenotype and EBV's.

Purchaser: ..... \$ .....

# LOT 19 SPRYS MT EVEREST L24 (P) (TWIN)

**DOB:** 25/05/2015 **Colour:** Red **Ident No.:** GLSL24

THE GROVE OSCAR A748 (P) (ET) (AI) Red  
 YAMBURGAN EVEREST E102 (P) Roan  
 YAMBURGAN MARGARET 31ST (P) Roan  
**Sire: YAMBURGAN EVEREST G643 (P) Red**  
 THE GROVE LEGEND A584 (P) (ET) (AI) Red  
 YAMBURGAN D231 (P) (AI) (SFA) Red Little White  
 YAMBURGAN JEWEL B300 (P) (SFA) Red

SPRYS RED ROCKET B069 (P) (ET) (AI) Red  
 ELOORA WINCHESTER E17 (P) (AI) Red Little White  
 ELOORA LAVENDAR Z50 (P) (AI) Red  
**Dam: SPRYS WINCHESTER CHERRY H181 (P) Red**  
 LONE PINE SHERMAN A029 (P) (AI) Red Little White  
 LONE PINE CHERRY C027 (P) Roan  
 LONE PINE CHERRY Z110 (P) Roan

MEASUREMENTS	
Scrotal Size	
Weight	

## February 2017 Shorthorn GROUP BREEDPLAN

	Calving Ease DIR (%)	Calving Ease DTRS (%)	Gestation Length (days)	Birth Wt. (kg)	200 Day Wt. (kg)	400 Day Wt. (kg)	600 Day Wt. (kg)	Mat. Cow Wt. (kg)	Milk (kg)	Scrotal Size (cm)	Days to Calving (days)	Carcase Wt. (kg)	Eye Muscle Area (sq.cm)	Rib Fat (mm)	Rump Fat (mm)	Retail Beef Yield (%)	IMF (%)	Dom. Mat. Index (\$)	Export Mat. Index (\$)	Nth Mat. Index (\$)
<b>EBV</b>	<b>+0.8</b>	<b>+2.6</b>	<b>-3.1</b>	<b>+4.6</b>	<b>+35</b>	<b>+51</b>	<b>+77</b>	<b>+65</b>	<b>+8</b>	<b>+2.4</b>	<b>-4.1</b>	<b>+42</b>	<b>+3.7</b>	<b>-1.5</b>	<b>-2.1</b>	<b>+1.5</b>	<b>+0.4</b>	<b>+\$39</b>	<b>+\$41</b>	<b>+\$55</b>
ACC	34%	28%	39%	52%	50%	50%	53%	44%	32%	45%	31%	42%	43%	46%	46%	41%	37%			

*Traits Observed:* BWT, 200WT, 600WT, SS, FAT, EMA, IMF

Another good red sire with a balance of EBV's. A twin reared with his sister by H181.

**Top 5% for 200, 400 & 600 wt, Scrotal. Top 10% for Gestation length and Milk.**

Purchaser: ..... \$ .....



# FABSTOCK

LIVESTOCK VITAMIN / MINERAL SUPPLEMENT



START UP BONUS  
**SAVE \$\$\$**  
 TRY FABSTOCK NOW!  
 freight free\* on your first  
 order from Wagga!  
 \*Minimum order 20 bags

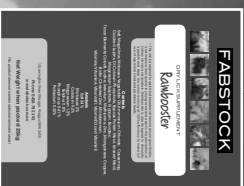
## STUBBLE MIX

Stubble mix is designed to obtain maximum production from low value dry summer feed such as cereal crop stubbles and dry natural pastures. With the use of methionine, Sulphur, Urea and Vitamin D your livestock's appetite for dry feed can be stimulated and this feed can then be converted into higher protein levels.



## RAMBOOSTER

A special mix designed by Peter Harvey to assist stud breeders in obtaining maximum body growth while assisting in improving nourishment and quality of wool in their young rams

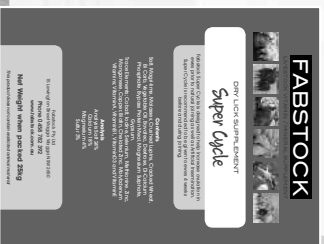


## IT'S NOT EXPENSIVE!

Feed Fabstock & improve your livestock's health, nutrition and growth rates from only 3c/head/day with sheep and 17.5c/head/day with cattle.

## NEW SUPER CYCLE

Fabstock Super Cycle is designed to help increase ovulation in ewes and cows prior to natural joining as well as Artificial Insemination. Super Cycle is recommended to be given to ewes/cows 4 weeks before and during joining.



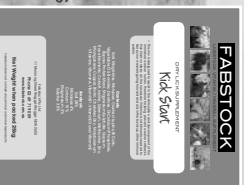
## FEEDLOT MIX

This mix is designed for sheep and cattle to obtain maximum body weight gains in a feedlot situation. As well as providing all essential Vitamins, minerals and trace elements Fabstock Feedlot mix also contains buffers and Bovatec to help control acidosis and promote healthy growth levels.



## KICK START

This mix is designed to assist in the stimulation and development of the immature weaner rumen therefore helping in the prevention of weaner setbacks. Kick Start contains all the necessary Vitamins and minerals needed to keep your weaners going forward and aid in the build up of the immune system. Dextrose and Bovatec aid in the early growth of your weaners.



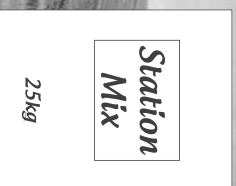
## LACTATION PASTURE MIX

This mix is for sheep and cattle before and after pregnancy. Containing higher levels of Calcium, Magnesium and Phosphorus. This mix will help in the prevention of Grass Tetany and Pregnancy Toxaemia. This mix will also increase weight gains for livestock grazing winter pastures and cereal crops.



## STATION MIX

A low budget mix produced for large scale graziers wanting to maintain and increase production and growth levels in large numbers of a reduced cost. Station Mix still provides your livestock with most of the required minerals without the expensive vitamins and trace elements.



Phone: 1300 733 644  
 www.fabstock.com.au

RUSSEL DURMAN: 0408 694 154  
 DOUG WALKER: 0458 782 392  
 11 MOORONG STREET, WAGGA WAGGA NSW 2650

# LOT 20 SPRYS TOBERMOREY L87 (P) (AI)

DOB: 27/07/2015 Colour: Red Ident No.: GLSL87

WEEBOLLABOLLA QUILPIE Q18 (P) Roan  
 WEEBOLLABOLLA THEODORE T85 (P) Roan  
 WEEBOLLABOLLA NINDETHANA (P) (AI) Red  
**Sire: YAMBURGAN TOBERMOREY F090 (P) (AI) Red**  
 THE GROVE NEW LEGEND Z058 (P) (ET) (AI) Roan  
 YAMBURGAN CONNIE D133 (P) Red  
 YAMBURGAN CONNIE 133RD (P) Red Little White

FUTURITY A011 (P) Red Little White  
 SPRYS ICONS WAGON C092 (P) (AI) Roan  
 SPRYS ICONS CLOUD A007 (P) Red Little White  
**Dam: SPRYS WAGONS MELBA F88 (P) (AI) Roan**  
 ALTA SPAR DARTITE WALK (IMP CAN) (H) Red  
 SPRYS WAGONS MELBA M002 (P) (ET) (AI) Red  
 SPRYS WAGONS MELBA NIAM 98H (IMP CAN) (P) Red

MEASUREMENTS	
Scrotal Size	
Weight	

## February 2017 Shorthorn GROUP BREEDPLAN

	Calving Ease DIR (%)	Calving Ease DTRS (%)	Gestation Length (days)	Birth Wt. (kg)	200 Day Wt. (kg)	400 Day Wt. (kg)	600 Day Wt. (kg)	Mat. Cow Wt. (kg)	Milk (kg)	Scrotal Size (cm)	Days to Calving (days)	Carcase Wt. (kg)	Eye Muscle Area (sq.cm)	Rib Fat (mm)	Rump Fat (mm)	Retail Beef Yield (%)	IMF (%)	Dom. Mat. Index (\$)	Export Mat. Index (\$)	Nth Mat. Index (\$)
<b>EBV</b>	<b>-2.0</b>	<b>-0.2</b>	<b>-0.3</b>	<b>+4.5</b>	<b>+3</b>	<b>+44</b>	<b>+61</b>	<b>+56</b>	<b>+5</b>	<b>+2.4</b>	<b>-2.1</b>	<b>+37</b>	<b>+5.4</b>	<b>-1.5</b>	<b>-2.8</b>	<b>+2.0</b>	<b>+0.3</b>	<b>+\$27</b>	<b>+\$30</b>	<b>+\$35</b>
ACC	44%	36%	68%	73%	69%	68%	73%	58%	43%	71%	44%	56%	57%	63%	63%	57%	49%			

Traits Observed: GL, CE, BWT, 200WT, 600WT, SS, FAT, EMA, IMF

A red with plenty of performance and carcass shape from a Dam who was from an imported Canadian embryo who is a full sister to Solution E006 mum.  
**Top 5% for Scrotal & RBV. Top 10% for 200, 400, 600wt & EMA.**

Purchaser: ..... \$ .....

# LOT 21 SPRYS JUNCTION L75 (P) (AI)

DOB: 22/07/2015 Colour: White Ident No.: GLSL75

WAUKARU PATENT 8161 (IMP USA) (P) (ET) Red  
 SPRYS PATENT'S ACE G38 (P) (ET) (AI) Roan  
 NEEARRA JUDITH 104 (P) Roan  
**Sire: SPRYS JUNCTION (P) (ET) (AI) Roan**  
 THE GROVE KASPROWICZ W791 (P) Red  
 THE GROVE PRIMROSE A742 (P) (ET) (AI) Red  
 THE GROVE PRIMROSE R202 (P) Red

WEEBOLLABOLLA THEODORE T85 (P) Roan  
 GRAWENJOBAR YANKY DOODLE (P) (AI) Roan  
 GRAWENJOBAR JOANNE 80TH (P) (AI) Roan  
**Dam: GRAWENJOBAR JOANNE 172ND (H) Roan**  
 EIONMOR MR GUS 80C (IMP CAN) (P) Roan  
 GRAWENJOBAR JOANNE 155TH (P) (AI) Roan  
 GRAWENJOBAR JOANNE 108TH (P) (AI) Red Little White

MEASUREMENTS	
Scrotal Size	
Weight	

## February 2017 Shorthorn GROUP BREEDPLAN

	Calving Ease DIR (%)	Calving Ease DTRS (%)	Gestation Length (days)	Birth Wt. (kg)	200 Day Wt. (kg)	400 Day Wt. (kg)	600 Day Wt. (kg)	Mat. Cow Wt. (kg)	Milk (kg)	Scrotal Size (cm)	Days to Calving (days)	Carcase Wt. (kg)	Eye Muscle Area (sq.cm)	Rib Fat (mm)	Rump Fat (mm)	Retail Beef Yield (%)	IMF (%)	Dom. Mat. Index (\$)	Export Mat. Index (\$)	Nth Mat. Index (\$)
<b>EBV</b>	<b>+5.6</b>	<b>-0.8</b>	<b>-3.4</b>	<b>+1.8</b>	<b>+32</b>	<b>+39</b>	<b>+59</b>	<b>+39</b>	<b>+6</b>	<b>+2.1</b>	<b>-3.8</b>	<b>+38</b>	<b>+4.3</b>	<b>+0.9</b>	<b>+2.0</b>	<b>0.0</b>	<b>+0.3</b>	<b>+\$42</b>	<b>+\$37</b>	<b>+\$57</b>
ACC	40%	32%	66%	65%	68%	65%	71%	56%	39%	69%	41%	54%	53%	60%	60%	54%	45%			

Traits Observed: GL, CE, 200WT, 600WT, SS, FAT, EMA, IMF

By the \$35,000 sire Junction, sold to Royalla. A very impressive white bull with plenty of length and natural thickness with a balance of traits. Out of top priced female from Grawenjobar dispersal who is 11 years old and still very sound and back in calf to calve again in 2017.

**Top 5% for Rib & Rump fat. Top 10% for Gestation length & days to calving. Top 15% for Calving ease direct & 200. Top 20% for BW & Scrotal.**

Purchaser: ..... \$ .....

# LOT 22 SPRYS ROANY'S BALANCE L38 (P)

DOB: 28/06/2015 Colour: Roan Ident No.: GLSL38

COOLONG XSS74 (P) (SFA) Red Little White  
 GLENELL IMF B90 (P) Red  
 GLENELL X154 (P) (SFA)  
**Sire: OUTBACK SPRYS BALANCE G266 (P) (ET) (AI) Red**  
 SPRYS RED URANUS V112 (H) (AI) Red  
 SCHULLER RED KATE C1 (P) (TWIN) (AI) Red  
 SPRYS LEGENDS KATE Y031 (P) (ET) (AI) Red

WAUKARU PATENT 8161 (IMP USA) (P) (ET) Red  
 SPRYS PATENT'S ACE G38 (P) (ET) (AI) Roan  
 NEEARRA JUDITH 104 (P) Roan  
**Dam: SPRYS ACES ROANY J308 (P) (ET) (AI) White**  
 MARSCHAY YOUNG ALBERT Y38 (P) Roan  
 LONE PINE ROANY B059 (P) Roan  
 LONE PINE ROANY W86 (P) Roan

MEASUREMENTS	
Scrotal Size	
Weight	

## February 2017 Shorthorn GROUP BREEDPLAN

	Calving Ease DIR (%)	Calving Ease DTRS (%)	Gestation Length (days)	Birth Wt. (kg)	200 Day Wt. (kg)	400 Day Wt. (kg)	600 Day Wt. (kg)	Mat. Cow Wt. (kg)	Milk (kg)	Scrotal Size (cm)	Days to Calving (days)	Carcase Wt. (kg)	Eye Muscle Area (sq.cm)	Rib Fat (mm)	Rump Fat (mm)	Retail Beef Yield (%)	IMF (%)	Dom. Mat. Index (\$)	Export Mat. Index (\$)	Nth Mat. Index (\$)
<b>EBV</b>	<b>-7.9</b>	<b>-4.6</b>	<b>+0.6</b>	<b>+3.3</b>	<b>+36</b>	<b>+52</b>	<b>+66</b>	<b>+45</b>	<b>+7</b>	<b>+1.2</b>	<b>-0.3</b>	<b>+37</b>	<b>+2.2</b>	<b>+0.9</b>	<b>+2.1</b>	<b>-0.4</b>	<b>+0.6</b>	<b>+\$24</b>	<b>+\$16</b>	<b>+\$31</b>
ACC	47%	40%	51%	72%	70%	67%	73%	60%	40%	70%	43%	56%	57%	63%	63%	57%	48%			

Traits Observed: CE, BWT, 200WT, 600WT, SS, FAT, EMA, IMF

Out of a very good Ace G38 first calver who has plenty of length and extension, who really moves with ease. The Balance G266 X Patents Ace G38 cross is working a treat, they really complement each other.

**Top 5% for 200, 400, Rib & Rump fat. Top 10% for 600 wt. Top 20% for Milk.**

Purchaser: ..... \$ .....





# LOT 23 SPRYS THEO L78 (P) (AI)

**DOB:** 26/07/2015 **Colour:** Roan **Ident No.:** GLSL78

WEEBOLLABOLLA KENT K18 (P) Red Little White  
 WEEBOLLABOLLA QUILPIT Q18 (P) Roan  
 WEEBOLLABOLLA HARBOUR H137 (P) Red

WF WANKELS PRIDE W38G (P) Roan  
 ROCKDELL PRIDE 50K (IMP CAN) (P) Red Little White  
 RAMSHOLT BUCKINGHAM 24G (P) Red

**Sire:** WEEBOLLABOLLA THEODORE T85 (P) Roan

**Dam:** SPRYS PRIDES UNEATA A207 (P) (ET) (AI) Red Little White

YAMBURGAN BOXER 58TH (P) Roan

NARRALDA LESTER (P) Red Little White

WEEBOLLABOLLA NINDETHANA (P) (AI) Red

NARRALDA UNEATA N48 (P) (AI) Red Little White

WEEBOLLABOLLA HELENA H144 (P) Red

NARRALDA UNEATA 12TH (P) Red Little White

## February 2017 Shorthorn GROUP BREEDPLAN

	Calving Ease DIR (%)	Calving Ease DTRS (%)	Gestation Length (days)	Birth Wt. (kg)	200 Day Wt. (kg)	400 Day Wt. (kg)	600 Day Wt. (kg)	Mat. Cow Wt. (kg)	Milk (kg)	Scrotal Size (cm)	Days to Calving (days)	Carcass Wt. (kg)	Eye Muscle Area (sq.cm)	Rib Fat (mm)	Rump Fat (mm)	Retail Beef Yield (%)	IMF (%)	Dom. Mat. Index (\$)	Export Mat. Index (\$)	Nth Mat. Index (\$)
<b>EBV</b>	<b>+9.5</b>	<b>+1.3</b>	<b>-1.4</b>	<b>+1.3</b>	<b>+22</b>	<b>+24</b>	<b>+36</b>	<b>+17</b>	<b>+5</b>	<b>+1.4</b>	<b>-2.0</b>	<b>+23</b>	<b>+4.3</b>	<b>+1.3</b>	<b>+2.1</b>	<b>+0.1</b>	<b>+0.4</b>	<b>+\$35</b>	<b>+\$37</b>	<b>+\$45</b>
ACC	55%	52%	71%	72%	65%	64%	64%	60%	58%	58%	51%	57%	57%	57%	57%	55%	53%			

*Traits Observed:* GL, CE, BWT, 200WT, 600WT, SS, FAT, EMA, IMF

Should be okay for heifers and cows. Low BW and positive fats which will appeal to some breeders and goes back to the Super Donor cow Uneata N48. L78 reared himself as his mum died when he was approximately 6 weeks of age.

**Top 5% for Calving ease direct & Rib fat. Top 10% for BW. Top 15% for Rump fat.**

Purchaser: ..... \$ .....

# LOT 24 OUTBACK SPRYS SOLID L281 (P)

**DOB:** 21/08/2015 **Colour:** Red Little White **Ident No.:** OB L281

WAUKARU GOLD CARD 5042 (IMP USA) (P) Red  
 WAUKARU PATENT 8161 (IMP USA) (P) (ET) Red  
 WAUKARU 12H MELITA ROSE 5021 (H) Red

JR LEGEND 78H (IMP USA) (P) Red  
 TLC ICON X003 (P) (ET) (AI) Red  
 HIGHDENUP FRANCES (P) (AI) Red Little White

**Sire:** SPRYS ROCK SOLID H5 (P) (ET) (AI) Red

**Dam:** SCHULLER KATHRYN B27 (P) Red

EDEN PARK STOCKMAN (P) (AI) Red

DUNBEACON WAGMAN (P) Roan

SCHULLER ANN B47 (P) Red

SPRYS WAGMANS KATHRYN Z119 (P) Red Little White

CHADWICK R127 (H) (SFA) Roan

PARK LANE KATHY R28 (P) Red and White

## February 2017 Shorthorn GROUP BREEDPLAN

	Calving Ease DIR (%)	Calving Ease DTRS (%)	Gestation Length (days)	Birth Wt. (kg)	200 Day Wt. (kg)	400 Day Wt. (kg)	600 Day Wt. (kg)	Mat. Cow Wt. (kg)	Milk (kg)	Scrotal Size (cm)	Days to Calving (days)	Carcass Wt. (kg)	Eye Muscle Area (sq.cm)	Rib Fat (mm)	Rump Fat (mm)	Retail Beef Yield (%)	IMF (%)	Dom. Mat. Index (\$)	Export Mat. Index (\$)	Nth Mat. Index (\$)
<b>EBV</b>	<b>-8.7</b>	<b>-4.1</b>	<b>+0.5</b>	<b>+5.2</b>	<b>+38</b>	<b>+49</b>	<b>+69</b>	<b>+63</b>	<b>+9</b>	<b>+1.5</b>	<b>+0.8</b>	<b>+41</b>	<b>+4.8</b>	<b>-1.2</b>	<b>-2.3</b>	<b>+1.3</b>	<b>+0.7</b>	<b>+\$14</b>	<b>+\$19</b>	<b>+\$20</b>
ACC	43%	36%	44%	73%	68%	70%	65%	56%	42%	70%	42%	52%	56%	61%	61%	55%	46%			

*Traits Observed:* BWT, 200WT, 400WT, SS, FAT, EMA, IMF

Excellent bull to use on cows. A great Rock Solid son who has excellent performance and maternal traits.

**Top 1% for Milk. Top 5% for 200 & 600 wt. Top 10% for 400 & IMF.**

Purchaser: ..... \$ .....

# LOT 25 OUTBACK SPRYS SOLID M259 (P)

**DOB:** 28/02/2016 **Colour:** Roan **Ident No.:** OB M259

WAUKARU GOLD CARD 5042 (IMP USA) (P) Red  
 WAUKARU PATENT 8161 (IMP USA) (P) (ET) Red  
 WAUKARU 12H MELITA ROSE 5021 (H) Red

LONE PINE SOLICITOR B083 (P) Red  
 SPRYS X FACTOR F173 (P) Red  
 PAKARAKA LEGENDS ROSE A005 (P) Red

**Sire:** SPRYS ROCK SOLID H5 (P) (ET) (AI) Red

**Dam:** OUTBACK PATSY J15 (P) Roan

EDEN PARK STOCKMAN (P) (AI) Red

SPRYS KIDMAN T44 (P) White

SCHULLER ANN B47 (P) Red

OUTBACK PATSY Z033 (P) Roan

CHADWICK R127 (H) (SFA) Roan

SPRYS P.P. PATSY S41 (P) Roan

## February 2017 Shorthorn GROUP BREEDPLAN

	Calving Ease DIR (%)	Calving Ease DTRS (%)	Gestation Length (days)	Birth Wt. (kg)	200 Day Wt. (kg)	400 Day Wt. (kg)	600 Day Wt. (kg)	Mat. Cow Wt. (kg)	Milk (kg)	Scrotal Size (cm)	Days to Calving (days)	Carcass Wt. (kg)	Eye Muscle Area (sq.cm)	Rib Fat (mm)	Rump Fat (mm)	Retail Beef Yield (%)	IMF (%)	Dom. Mat. Index (\$)	Export Mat. Index (\$)	Nth Mat. Index (\$)
<b>EBV</b>	<b>-6.7</b>	<b>-3.4</b>	<b>-0.9</b>	<b>+4.1</b>	<b>+34</b>	<b>+48</b>	<b>+64</b>	<b>+51</b>	<b>+6</b>	<b>+1.9</b>	<b>+0.1</b>	<b>+43</b>	<b>+7.3</b>	<b>-0.4</b>	<b>-1.1</b>	<b>+1.8</b>	<b>+0.6</b>	<b>+\$24</b>	<b>+\$27</b>	<b>+\$31</b>
ACC	40%	30%	40%	73%	68%	70%	65%	55%	36%	70%	40%	51%	56%	62%	62%	55%	45%			

*Traits Observed:* BWT, 200WT, 400WT, SS, FAT, EMA, IMF

Stud Sire Potential - Balance and softness at its best. Note the age of this young bull. Take him home and use in the spring. Excellent bull to give you plenty of weight and EMA in his progeny. The X Factor daughters are very productive and have excellent udders.

**Top 5% for EMA. Top 10% for 200, 400 & RBV. Top 15% for 600 wt. Top 20% for Milk.**

Purchaser: ..... \$ .....



